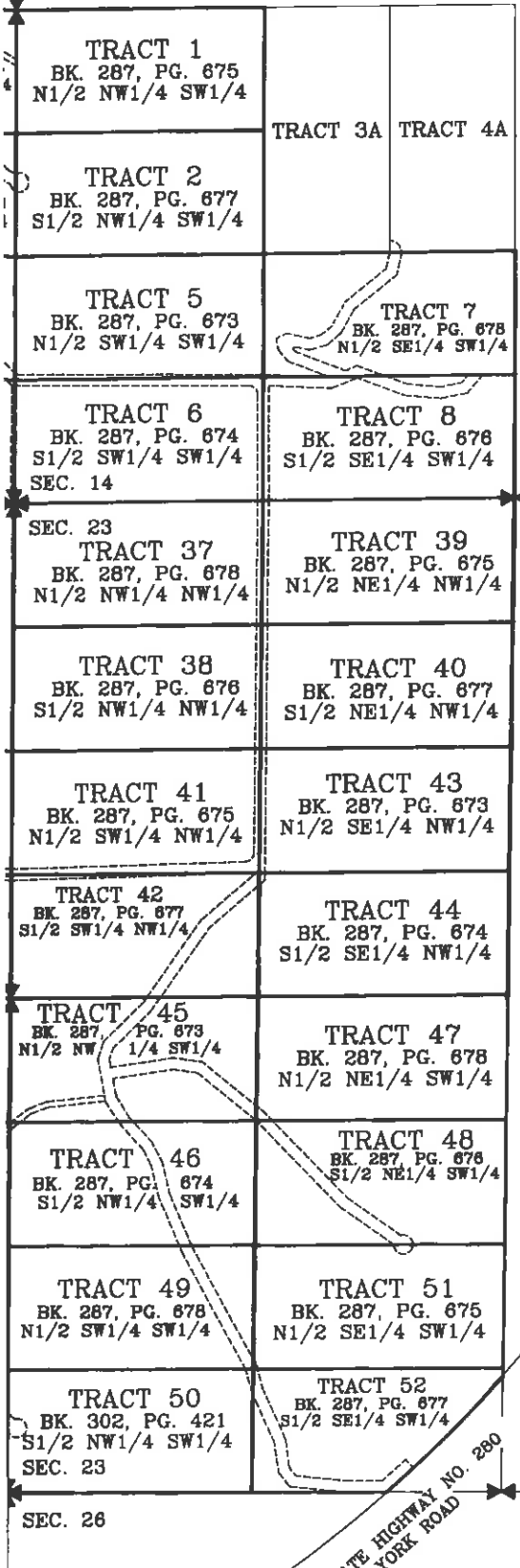


OF SURVEY

PURPOSE: (1) CREATE A 60 FOOT PRIVATE ACCESS & UTILITY EASEMENT; (2) CREATE A 15 FOOT PEDESTRIAN & EQUESTRIAN EASEMENT

FOR: RED CREEK RANCH INC.



LEGEND

- ✠ SECTION CORNER
- ✦ 1/4 CORNER

----- 60' PRIVATE ACCESS & UTILITY EASEMENT

CERTIFICATE OF EXAMINING LAND SURVEYOR

REVIEWED FOR ERRORS AND OMISSIONS THIS _____
 DAY OF _____, 199____,
 PURSUANT TO SECTION 76-3-611(2)(A), MCA.

EXAMINING LAND SURVEYOR
 REG. NO. _____

CERTIFICATE OF SURVEYOR

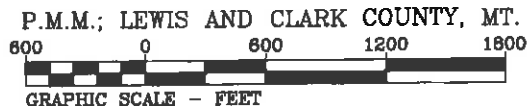


Stephen J. Ries
 STEPHEN J. RIES R.S. (41265)

PREPARED BY RIES SURVEYING
 6850 GREEN MEADOW DR.
 HELENA, MT 59602



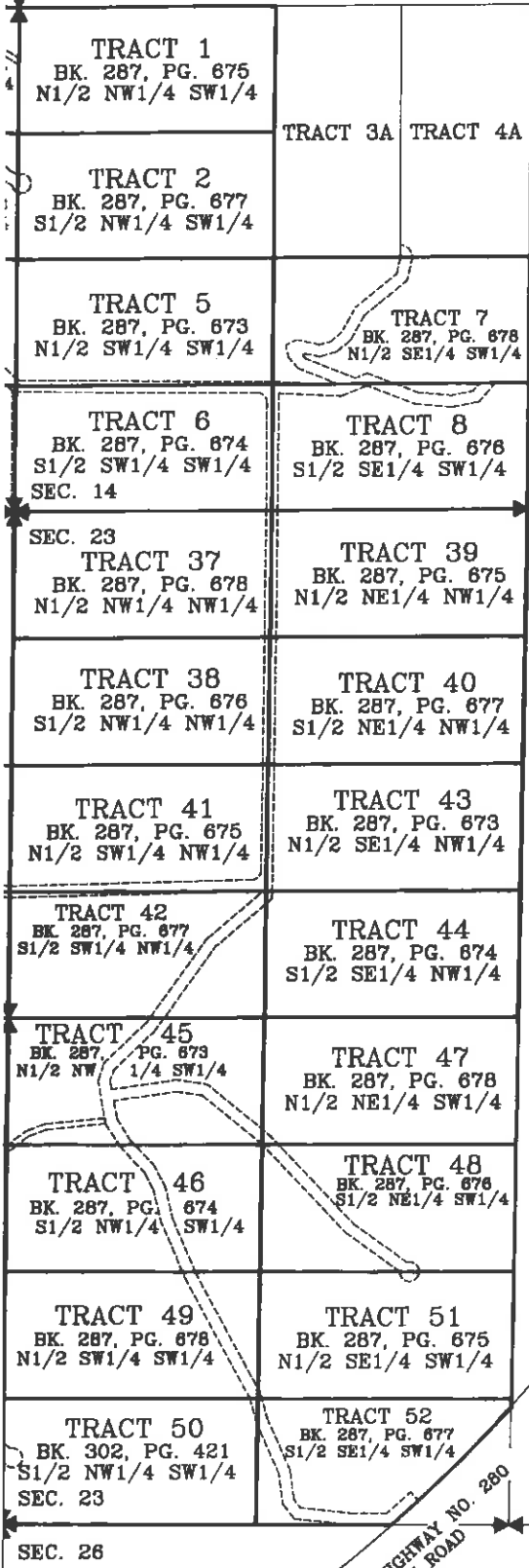
1/4	SEC.	T.	R.
☒	14	11N	2W
☒	15	11N	2W
☒	22	11N	2W
☒	23	11N	2W
☒	27	11N	2W



OF SURVEY

PURPOSE: (1) CREATE A 60 FOOT PRIVATE ACCESS & UTILITY EASEMENT; (2) CREATE A 15 FOOT PEDESTRIAN & EQUESTRIAN EASEMENT

FOR: RED CREEK RANCH INC.



LEGEND

✦ SECTION CORNER

◀ 1/4 CORNER

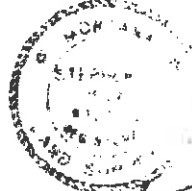
----- 60' PRIVATE ACCESS & UTILITY EASEMENT

CERTIFICATE OF EXAMINING LAND SURVEYOR

REVIEWED FOR ERRORS AND OMISSIONS THIS _____
DAY OF _____, 199____,
PURSUANT TO SECTION 76-3-611(2)(A), MCA.

EXAMINING LAND SURVEYOR
REG. NO. _____

CERTIFICATE OF SURVEYOR



STEPHEN J. RIES R.L.S. (41255)

PREPARED BY RIES SURVEYING
6850 GREEN MEADOW DR.
HELENA, MT 59602

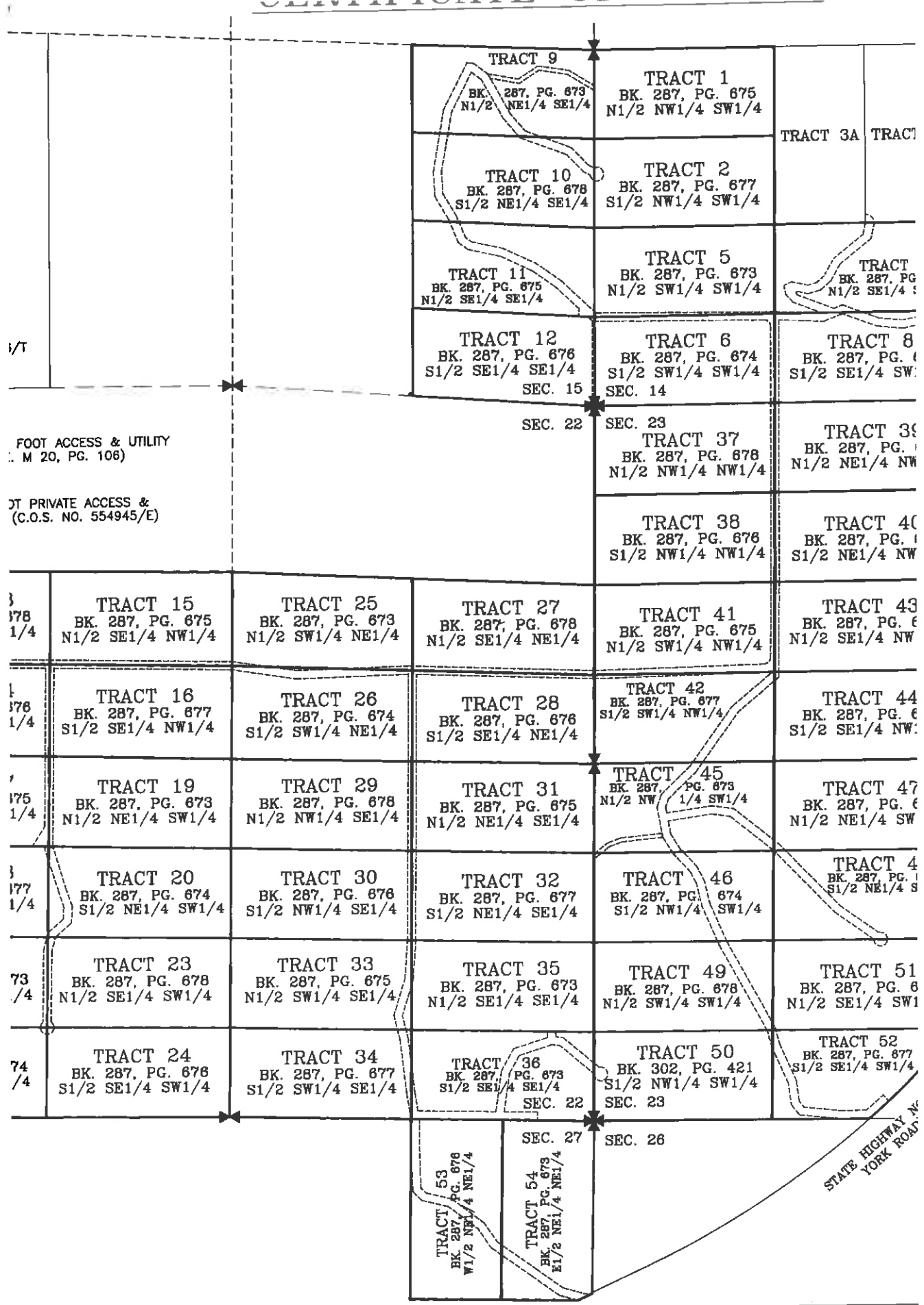
1/4	SEC.	T.	R.
☐	14	11N	2W
☐	15	11N	2W
☒	22	11N	2W
☐	23	11N	2W
☐	27	11N	2W



P.M.M.; LEWIS AND CLARK COUNTY, MT.

600 0 600 1200 1800

GRAPHIC SCALE - FEET



TRACT 9

BK. 287, PG. 673
N1/2 NE1/4 SE1/4

TRACT 1
BK. 287, PG. 675
N1/2 NW1/4 SW1/4

TRACT 3A TRACT

TRACT 10
BK. 287, PG. 678
S1/2 NE1/4 SE1/4

TRACT 2
BK. 287, PG. 677
S1/2 NW1/4 SW1/4

TRACT 11
BK. 287, PG. 675
N1/2 SE1/4 SE1/4

TRACT 5
BK. 287, PG. 673
N1/2 SW1/4 SW1/4

TRACT
BK. 287, PG.
N1/2 SE1/4 S

TRACT 12
BK. 287, PG. 676
S1/2 SE1/4 SE1/4
SEC. 15

TRACT 6
BK. 287, PG. 674
S1/2 SW1/4 SW1/4
SEC. 14

TRACT 8
BK. 287, PG. 6
S1/2 SE1/4 SW

SEC. 22

SEC. 23

TRACT 37
BK. 287, PG. 678
N1/2 NW1/4 NW1/4

TRACT 39
BK. 287, PG. 6
N1/2 NE1/4 NW

TRACT 38
BK. 287, PG. 676
S1/2 NW1/4 NW1/4

TRACT 40
BK. 287, PG. 6
S1/2 NE1/4 NW

FOOT ACCESS & UTILITY
M 20, PG. 106)

PRIVATE ACCESS &
(C.O.S. NO. 554945/E)

178
1/4

TRACT 15
BK. 287, PG. 675
N1/2 SE1/4 NW1/4

TRACT 25
BK. 287, PG. 673
N1/2 SW1/4 NE1/4

TRACT 27
BK. 287, PG. 678
N1/2 SE1/4 NE1/4

TRACT 41
BK. 287, PG. 675
N1/2 SW1/4 NW1/4

TRACT 43
BK. 287, PG. 6
N1/2 SE1/4 NW

178
1/4

TRACT 16
BK. 287, PG. 677
S1/2 SE1/4 NW1/4

TRACT 26
BK. 287, PG. 674
S1/2 SW1/4 NE1/4

TRACT 28
BK. 287, PG. 676
S1/2 SE1/4 NE1/4

TRACT 42
BK. 287, PG. 677
S1/2 SW1/4 NW1/4

TRACT 44
BK. 287, PG. 6
S1/2 SE1/4 NW

175
1/4

TRACT 19
BK. 287, PG. 673
N1/2 NE1/4 SW1/4

TRACT 29
BK. 287, PG. 678
N1/2 NW1/4 SE1/4

TRACT 31
BK. 287, PG. 675
N1/2 NE1/4 SE1/4

TRACT 45
BK. 287, PG. 673
N1/2 NW 1/4 SW1/4

TRACT 47
BK. 287, PG. 6
N1/2 NE1/4 SW

177
1/4

TRACT 20
BK. 287, PG. 674
S1/2 NE1/4 SW1/4

TRACT 30
BK. 287, PG. 676
S1/2 NW1/4 SE1/4

TRACT 32
BK. 287, PG. 677
S1/2 NE1/4 SE1/4

TRACT 46
BK. 287, PG. 674
S1/2 NW1/4 SW1/4

TRACT 48
BK. 287, PG. 6
S1/2 NE1/4 S

73
/4

TRACT 23
BK. 287, PG. 678
N1/2 SE1/4 SW1/4

TRACT 33
BK. 287, PG. 675
N1/2 SW1/4 SE1/4

TRACT 35
BK. 287, PG. 673
N1/2 SE1/4 SE1/4

TRACT 49
BK. 287, PG. 678
N1/2 SW1/4 SW1/4

TRACT 51
BK. 287, PG. 6
N1/2 SE1/4 SW1/4

74
/4

TRACT 24
BK. 287, PG. 676
S1/2 SE1/4 SW1/4

TRACT 34
BK. 287, PG. 677
S1/2 SW1/4 SE1/4

TRACT 36
BK. 287, PG. 673
S1/2 SE1/4 SE1/4
SEC. 22

TRACT 50
BK. 302, PG. 421
S1/2 NW1/4 SW1/4
SEC. 23

TRACT 52
BK. 287, PG. 677
S1/2 SE1/4 SW1/4

SEC. 27

SEC. 26

TRACT 53
BK. 287, PG. 676
W1/2 NE1/4 NE1/4

TRACT 54
BK. 287, PG. 673
E1/2 NE1/4 NE1/4

STATE HIGHWAY N.Y.
YORK ROAD

574 177/R.

PAULETTE DEHART CLK & REG
LEWIS & CLARK CO

CERTIFICATE

93 JAN 23 AM 11:03

BOOK M PAGE

BK *Shelby M. DeHart*

550
+450.00

TRACT C
(TRACT 60)
C.O.S. NO. 554945/E

TRACT D
(TRACT 61)
C.O.S. NO. 554945/E

TRACT 59
C.O.S. NO. 571406/T

SEC. 16

SEC. 15

SEC. 21

SEC. 22

RECORDED 20 FOOT ACCESS & UTILITY
EASEMENT (BK. M 20, PG. 106)

RECORDED 60 FOOT PRIVATE ACCESS &
UTILITY EASEMENT (C.O.S. NO. 554945/E)

TRACT 13
BK. 287, PG. 678
N1/2 SW1/4 NW1/4

TRACT 15
BK. 287, PG. 675
N1/2 SE1/4 NW1/4

TRACT 25
BK. 287, PG. 673
N1/2 SW1/4 NE1/4

TRACT
BK. 287, PG.
N1/2 SE1/4

TRACT 14
BK. 287, PG. 676
S1/2 SW1/4 NW1/4

TRACT 16
BK. 287, PG. 677
S1/2 SE1/4 NW1/4

TRACT 26
BK. 287, PG. 674
S1/2 SW1/4 NE1/4

TRACT
BK. 287, PG.
S1/2 SE1/4

TRACT 17
BK. 287, PG. 675
N1/2 NW1/4 SW1/4

TRACT 19
BK. 287, PG. 673
N1/2 NE1/4 SW1/4

TRACT 29
BK. 287, PG. 678
N1/2 NW1/4 SE1/4

TRACT
BK. 287, PG.
N1/2 NE1/4

TRACT 18
BK. 287, PG. 677
S1/2 NW1/4 SW1/4

TRACT 20
BK. 287, PG. 674
S1/2 NE1/4 SW1/4

TRACT 30
BK. 287, PG. 676
S1/2 NW1/4 SE1/4

TRACT
BK. 287, PG.
S1/2 NE1/4

TRACT 21
BK. 287, PG. 673
N1/2 SW1/4 SW1/4

TRACT 23
BK. 287, PG. 678
N1/2 SE1/4 SW1/4

TRACT 33
BK. 287, PG. 675
N1/2 SW1/4 SE1/4

TRACT
BK. 287, PG.
N1/2 SE1/4

TRACT 22
BK. 287, PG. 674
S1/2 SW1/4 SW1/4
SEC. 21

TRACT 24
BK. 287, PG. 676
S1/2 SE1/4 SW1/4

TRACT 34
BK. 287, PG. 677
S1/2 SW1/4 SE1/4

TRACT
BK. 287, PG.
S1/2 SE1/4

SEC. 21

SEC. 28

SEC. 27

TRACT
BK. 287, PG.
N1/2 NE1/4

TRACT
BK. 287, PG.
S1/2 NE1/4

TRACT 11
BK. 287, PG. 675
N1/2 SE1/4 SE1/4

TRACT
BK. 287, PG.
S1/2 SE1/4 S
SI

SI

TRACT
BK. 287, PG. 676
N1/2 NE1/4 NE1/4

DATE: DECEMBER 10, 1997
DRAFTED BY: CJR
JOB NO. 96200

OF SURVEY

ACCESS & UTILITY EASEMENT;
AN & EQUESTRIAN EASEMENT

B.L.M. PROPERTY

N 89°57'26"E

656.97'

656.97'

FND. 1/2" REBAR W/Y.P.C. (2354S)
SET 5/8" REBAR W/ 2" ALUM. CAP
(RIES-4125S), CENTER 1/4 CORNER
SECTION 14

LEGEND

- SET 5/8" REBAR W/Y.P.C. (RIES-4125S)
- SET 5/8" REBAR W/2" ALUM. CAP [4125S (1/16 CORNER)]
- ▲ SET 5/8" REBAR W/1 1/2" ALUM. CAP [4125S (1/64 COR.)]
- △ SET 5/8" REBAR W/1 1/2" ALUM. CAP [4125S (REF. MON.)]
- SET 5/8" REBAR W/Y.P.C. [RIES-4125S (1/64 CORNER)]
- SET 5/8" REBAR W/Y.P.C. [RIES-4125S (1/16 CORNER)]
- CALCULATED POSITION, NOTHING FOUND OR SET
- RIGHT-OF-WAY LIMIT OF PRIVATE ACCESS & UTILITY EASEMENT

TRACT 3-A
C.O.S. NO. 563652/B

TRACT 4-A
C.O.S. NO. 563652/B

658.04'

658.03'

N 89°57'00"E N 120°14'1"E N 89°57'00"E

TRACT 7

N1/2 SE1/4 SW1/4

RIDGE CREST ROAD

RIDGE CREST ROAD

TRACT 8

S1/2 SE1/4 SW1/4

PEAKS VIEW DRIVE

FND. BRASS CAP (B.L.M.),
1/4 CORNER

S 89°56'34"W 1318.20'

1/4	SEC.	T.	R.
☐	14	11N	2W
☐	15	11N	2W



TRACT 39

SEC. 14

SEC. 23

W1/4

W1/4

W1/4

13'

W1/4

S SURVEYING
EADOW DR.
59602

P.M.M.; LEWIS AND CLARK CO., MT.
SHEET 2 OF 9
CERTIFICATE OF SURVEY NO. _____

CERTIFICATE OF SURVEY

PURPOSE: (1) CREATE A 60 FOOT PRIVATE ACCESS & UTILITY EASEMENT;
 (2) CREATE A 15 FOOT PEDESTRIAN & EQUESTRIAN EASEMENT

RTY

B.L.M. PROPERTY

SEC. 15 | SEC. 14

1313.95'

656.9'

FOOT RECORDED PRIVATE ACCESS & UTILITY EASEMENT (BK. M 19, PG. 5097)

FND. 1/2" REBAR W/Y.P.C. (2354S),
 SET 5/8" REBAR W/ 2" ALUM. CAP
 (RIES-4125S), SEE CORNER FORM

TRACT 9
 2 NE1/4 SE1/4

TRACT 1
 N1/2 NW1/4 SW1/4

LEGEND

- SET 5/8" RI
- SET 5/8" RI
- ▲ SET 5/8" RI
- △ SET 5/8" RI
- SET 5/8" RI
- SET 5/8" RI
- CALCULATED
- RIGHT-OF-WAY

TRACT
 C.O.S. NO. 51

60 FOOT PRIVATE ACCESS & UTILITY EASEMENT

TRACT 10
 E1/4

TRACT 2
 S1/2 NW1/4 SW1/4

1315.01'

N 89°57'13"E

1316.07'

N 89°57'00"E

TRACT 5
 N1/2 SW1/4 SW1/4

TRACT 6
 S1/2 SW1/4 SW1/4

FND. 5/8" REBAR W/Y.P.C. (2354S),
 SET 5/8" x 30" ROD W/3 1/4"
 ALUMINUM CAP (RIES-4125S),
 SEE CORNER FORM,
 SECTION CORNER

RIDGE CREST ROAD

328.12'
 S 87°17'49"E

15' PEDESTRIAN & EQUESTRIAN EASEMENT
 (NO MOTORIZED VEHICLES ALLOWED)

30'
 60 FOOT PRIVATE & UTILITY EASEMENT

PEAKS VIEW DR

SEC. 15 | SEC. 14

S 89°56'34"W

SEC. 22 | SEC. 23

1318.20'

TRACT 37

TRA

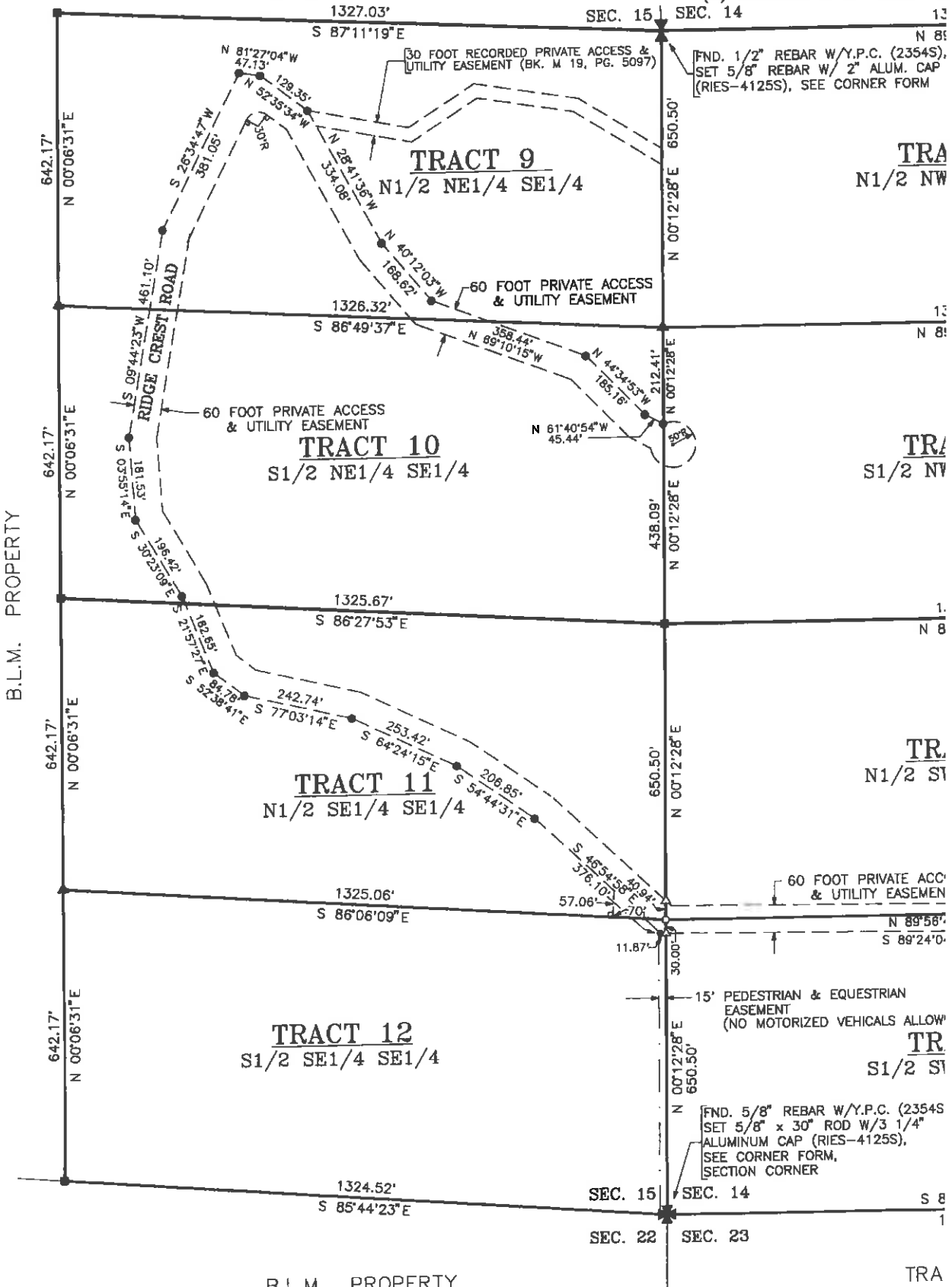
PREPARED BY RIES SURVEYING
 6850 GREEN MEADOW DR.
 HELENA, MT 59602

CERTIFICATE

NOTE: SEE C.O.S. NO. 571406/T
FOR SECTION 15 BREAKDOWN

B.L.M. PROPERTY

PURPOSE: (1) CREATE A 60 FOOT PR
(2) CREATE A 15 FOOT PE



B.L.M. PROPERTY

B.L.M. PROPERTY

PREPARED
6850 GF
HELEJ

DATE: DECEMBER 10, 1997
DRAFTED BY: CJR
JOB NO. 96200-2

574177/e

DATE: JUN 23 1911: 03
 550
 14800

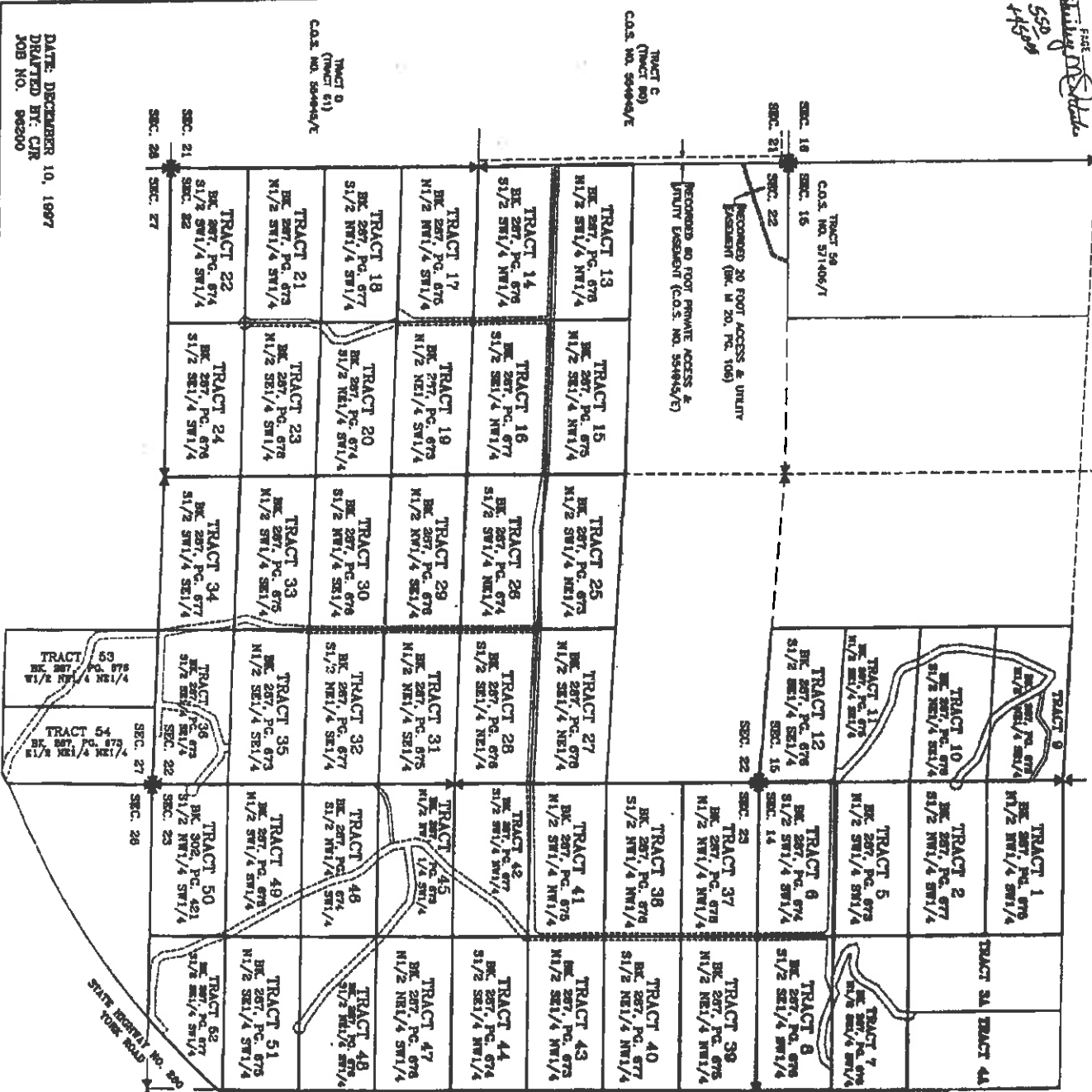
CERTIFICATE OF SURVEY

PURPOSE: (1) CHANGE A 20 FOOT PRIVATE ACCESS & UTILITY EASEMENT TO 25 FOOT PRIVATE ACCESS & UTILITY EASEMENT

FOR: MDI CHECK RANCH INC.

LEGEND

- SECTION CORNER
- 20' PRIVATE ACCESS & UTILITY EASEMENT
- 25' PRIVATE ACCESS & UTILITY EASEMENT



P.M.K. LEVINS AND CLARK COUNTY, MT.
 400 400 1200 1600
 GRAPHIC SCALE - FEET

1/4	SEC. 1	2
1/4	14	11M 27
1/4	15	11M 27
1/4	22	11M 27
1/4	23	11M 27
1/4	27	11M 27

PREPARED BY RUS SURVEYING
 6950 GREEN MEADOW DR.
 HELENA, MT 59602



CERTIFICATE OF SURVEYORS

CERTIFICATE OF SURVEYORS LAST EXISTING
 REVOKED FOR ERRORS AND OMISSIONS WAS 25 25
 MAY 07 1988
 PURSUANT TO SECTION 76-3-111(Q)(4), M.C.A.
 DORIS L. LEVINS
 REG. NO. 51221

DATE: DECEMBER 10, 1997
 DRAWN BY: CJR
 JOB NO. 96200

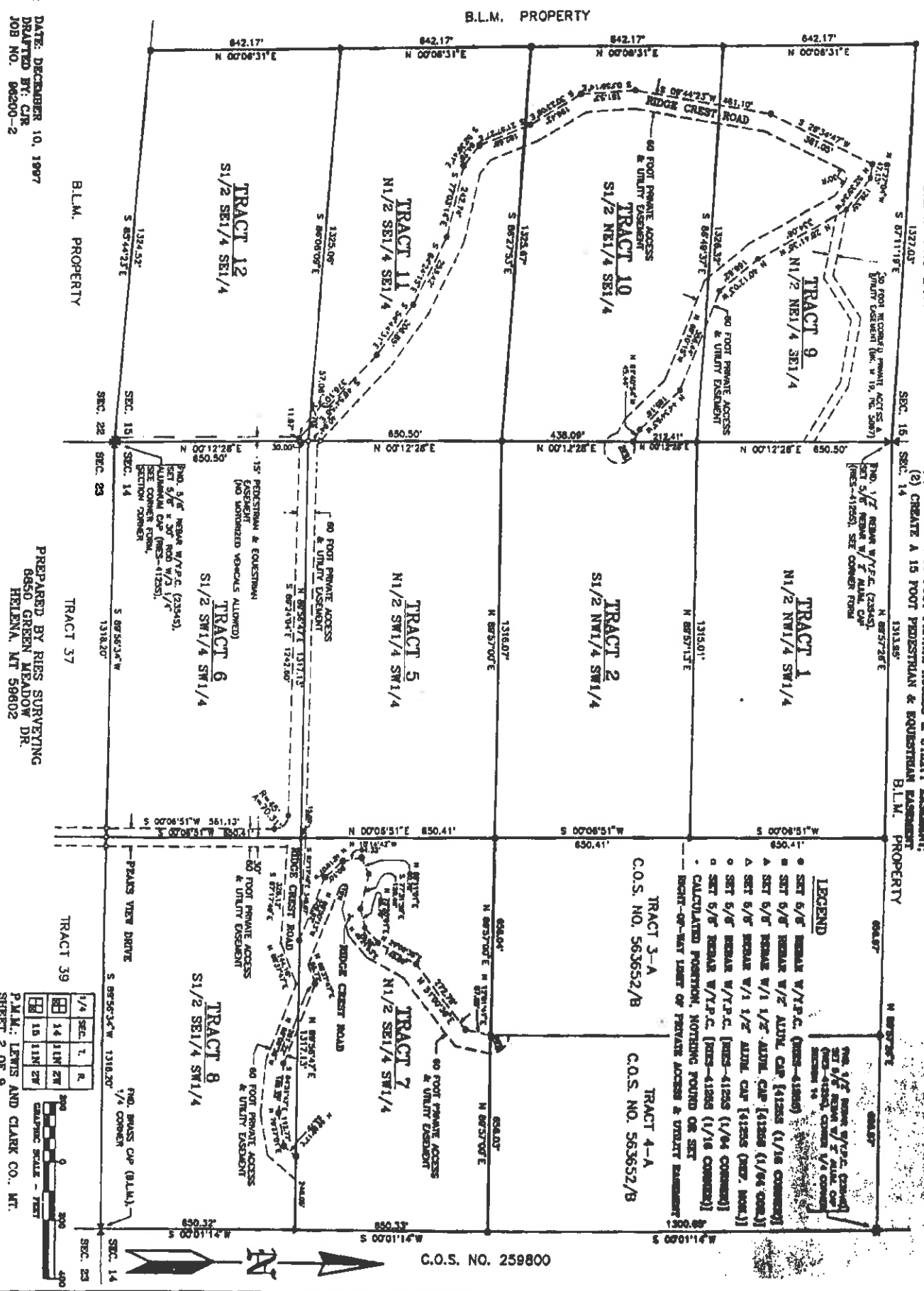
NOTE: SEE C.O.S. NO. 571498A/T FOR SECTION 15 PRELIMINARY

BLM. PROPERTY

PURPOSE: (1) CREATE A 60 FOOT PRIVATE ACCESS & UTILITY EASEMENT;
(2) CREATE A 15 FOOT PEDESTRIAN & EQUESTRIAN EASEMENT

CERTIFICATE OF SURVEY

BLM. PROPERTY



PRO. 1/2' REBAR W/Y.P.C. (23445)
SET 5/8" REBAR W/ 1/2" ALUM. CAP
[PERS-41252], SEE CORNER FORM

PRO. 5/8" REBAR W/Y.P.C. (23445)
SET 5/8" REBAR W/ 1/2" ALUM. CAP
[PERS-41253], SEE CORNER FORM

LEGEND

- SET 6/8" REBAR W/Y.P.C. [PERS-41252]
- SET 6/8" REBAR W/ 1/2" ALUM. CAP [1125] (1/16 CORNER)
- ▲ SET 6/8" REBAR W/ 1 1/2" ALUM. CAP [1125] (1/16 CORNER)
- ▲ SET 6/8" REBAR W/ 1 1/2" ALUM. CAP [1125] (1/4 CORNER)
- SET 5/8" REBAR W/Y.P.C. [PERS-41253] (1/16 CORNER)
- SET 5/8" REBAR W/Y.P.C. [PERS-41253] (1/16 CORNER)
- CALCULATED POSITION, NOTHING FOUND OR SET
- RIGHT-OF-WAY LINE OF PRIVATE ACCESS & UTILITY EASEMENT

TRACT 3-A
C.O.S. NO. 563652/B

TRACT 4-A
C.O.S. NO. 563652/B

C.O.S. NO. 259800

DATE: DECEMBER 10, 1997
DRAFTED BY: CIR
JOB NO. 06300-2

PREPARED BY RIES SURVEYING
6850 GREEN MEADOW DR.
HELENA, MT 59602

1/4	SEC. 7	R.
1/4	14	2W
1/4	15	2W



P.M.M. LEWIS AND CLARK CO., MT.
SHEET 2 OF 9
CERTIFICATE OF SURVEY NO.

CERTIFICATE OF SURVEY

PURPOSE: (1) CREATE A 60 FOOT PRIVATE ACCESS & UTILITY EASEMENT FOR: RED CREEK RANCH INC.

BLM BRASS CAP (BLM)
 SECTION CORNER
 SEC. 16
 SEC. 15
 SEC. 21
 SEC. 22

1326.82'
 5 86°58'11"E

SEC. 16
 1259.82'
 5 86°58'11"E

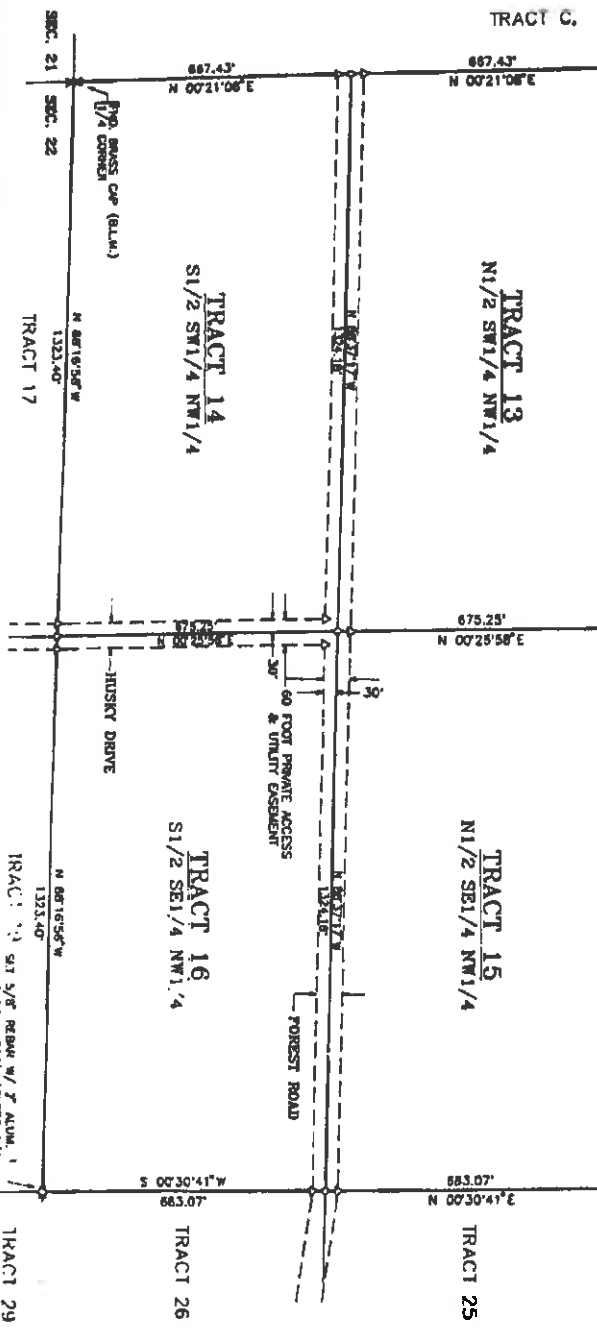
TRACT C, C.O.S. NO. 554945/E

BLM PROPERTY

BLM PROPERTY

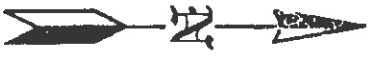
TRACT 13
 N1/2 SW1/4 NW1/4

TRACT 15
 N1/2 SE1/4 NW1/4



LEGEND

- SET 5/8" REBAR V/T/P.C. (NRS-4122S)
- SET 5/8" REBAR V/T ALUM. CAP (4122S (1/16 CORNER))
- SET 5/8" REBAR V/1 1/2" ALUM. CAP (4122S (1/94 COR.))
- SET 5/8" REBAR V/1 1/2" ALUM. CAP (4122S (RFR. 8002))
- SET 5/8" REBAR V/T/P.C. (NRS-4122S (1/16 CORNER))
- SET 5/8" REBAR V/T/P.C. (NRS-4122S (1/16 CORNER))
- CALCULATED POSITION, NOTHING FOUND OR SET
- RIGHT-OF-WAY LIMIT OF PRIVATE ACCESS & UTILITY EASEMENT



DATE: DECEMBER 10, 1997
 DRAFTED BY: CJR
 JOB NO. 96200-3

PREPARED BY RISS SURVEYING
 6850 GREEN MEADOW DR.
 HELENA, MT 59602

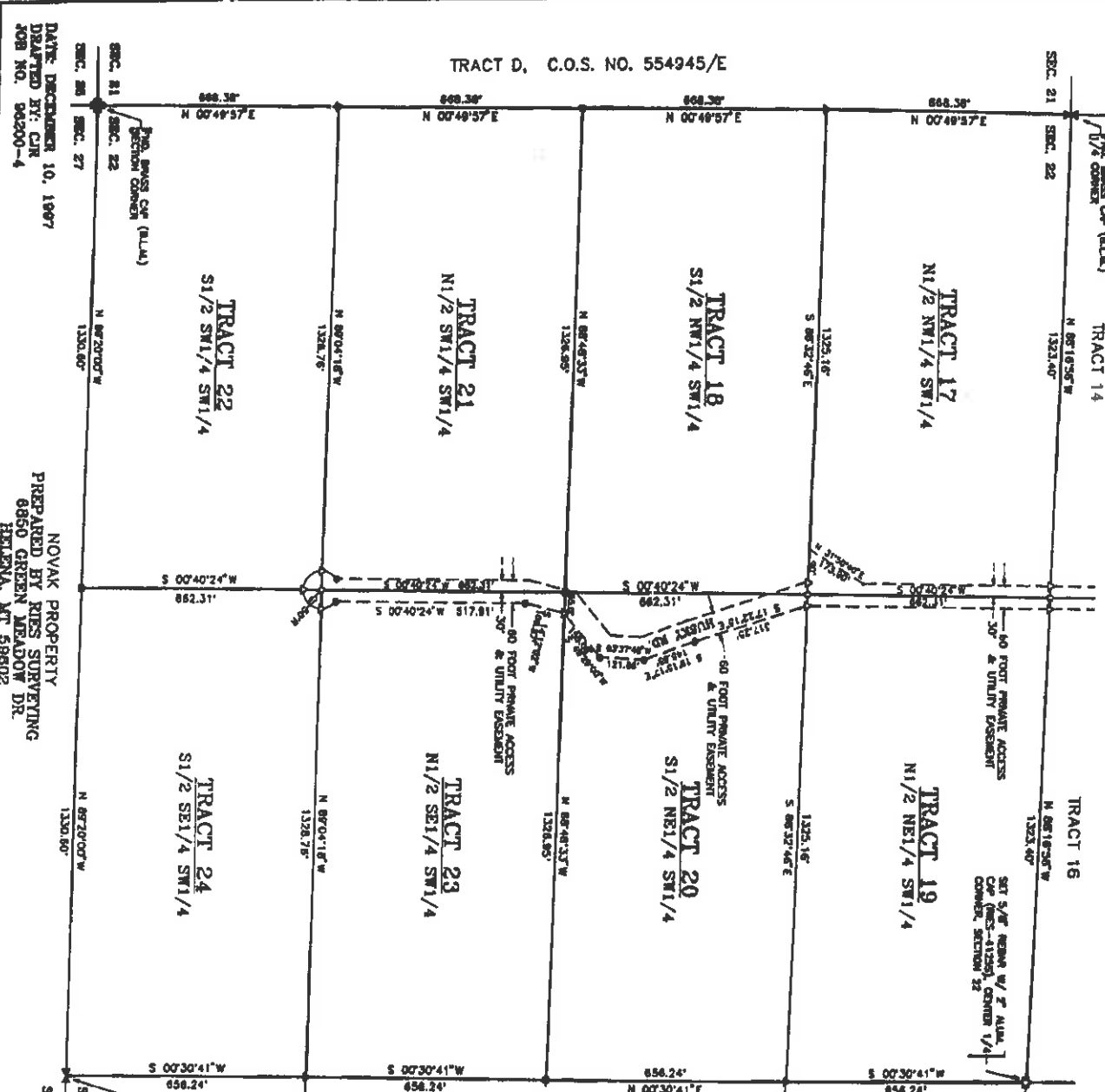
1/4	SEC.	T.	R.
22	11N	2W	



P.M.M. LEWIS AND CLARK CO., LT.
 SHEET 3 OF 9
 CERTIFICATE OF SURVEY NO.

CERTIFICATE OF SURVEY

PURPOSE: (1) CREATE A 60 FOOT PRIVATE ACCESS & UTILITY EASEMENT FOR RED CREEK RANCH INC.



LEGEND

- SET 5/8" REBAR W/2" P.C. [RHS-41235]
- SET 5/8" REBAR W/2" ALUM. CAP [41235 (1/16 CORNER)]
- ▲ SET 5/8" REBAR W/1 1/2" ALUM. CAP [41235 (1/64 COR.)]
- △ SET 5/8" REBAR W/1 1/2" ALUM. CAP [41235 (COR. MARK)]
- SET 5/8" REBAR W/2" P.C. [RHS-41235 (1/64 CORNER)]
- SET 5/8" REBAR W/2" P.C. [RHS-41235 (1/16 CORNER)]
- CALCULATED POSITION, NOTHING FOUND OR SET
- RIGHT-OF-WAY LIMIT OR PRIVATE ACCESS & UTILITY EASEMENT

1/4	SEC.	T.	R.
29	11N	2W	



DATE: DECEMBER 10, 1997
 DRAFTED BY: CJR
 JOB NO. 96200-4

NOVAK PROPERTY
 PREPARED BY RUS SURVEYING
 6860 GREEN MEADOW DR.
 HELENA, MT 59602

P.M.M. LEVINS AND CLARK CO., MT.
 SHEET 4 OF 9
 CERTIFICATE OF SURVEY NO. _____

CERTIFICATE OF SURVEY

PURPOSE: (1) CREATE A 60 FOOT PRIVATE ACCESS & UTILITY EASEMENT FOR: RED CREEK RANCH INC.

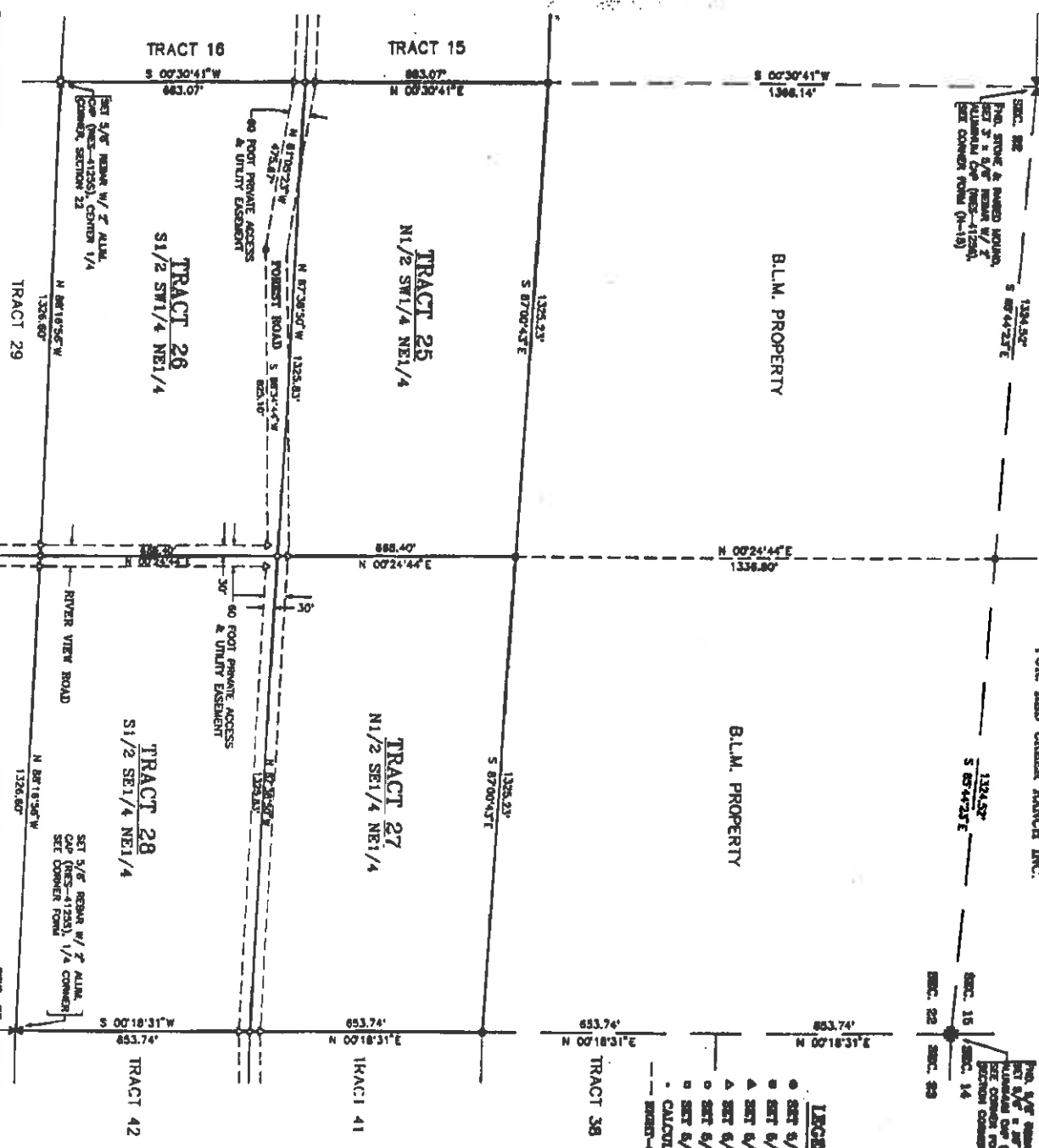
SEC. 18
 1264.52'
 S 87°44'23"E
 SET 5/8" IRON W/2" ALUM. CAP (11250), SET CORNER POINT (0-18)

SEC. 14
 1264.52'
 S 87°44'23"E
 SET 5/8" IRON W/2" ALUM. CAP (11250), SET CORNER POINT (0-18)

BLM. PROPERTY

BLM. PROPERTY

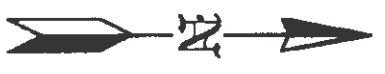
- LEGEND**
- SET 5/8" IRON W/2" ALUM. CAP (11250)
 - ▲ SET 5/8" IRON W/2" ALUM. CAP (11250) (1/16 CORNER)
 - △ SET 5/8" IRON W/1 1/2" ALUM. CAP (11250) (1/64 CORN.)
 - ▲ SET 5/8" IRON W/1 1/2" ALUM. CAP (11250) (INT. MARK)
 - SET 5/8" IRON W/2" ALUM. CAP (11250) (1/4 CORNER)
 - SET 5/8" IRON W/2" ALUM. CAP (11250) (1/16 CORNER)
 - CALCULATED POSITION, NOTHING POINTS OR SET
 - BOUNDARY LINE OF PRIVATE ACCESS & UTILITY EASEMENT



DATE: DECEMBER 18, 1897
 DRAFTED BY: CJR
 JOB NO. 96200-5

PREPARED BY RIES SURVEYING
 6850 GREEN MEADOW DR.
 HELENA, MT 59602

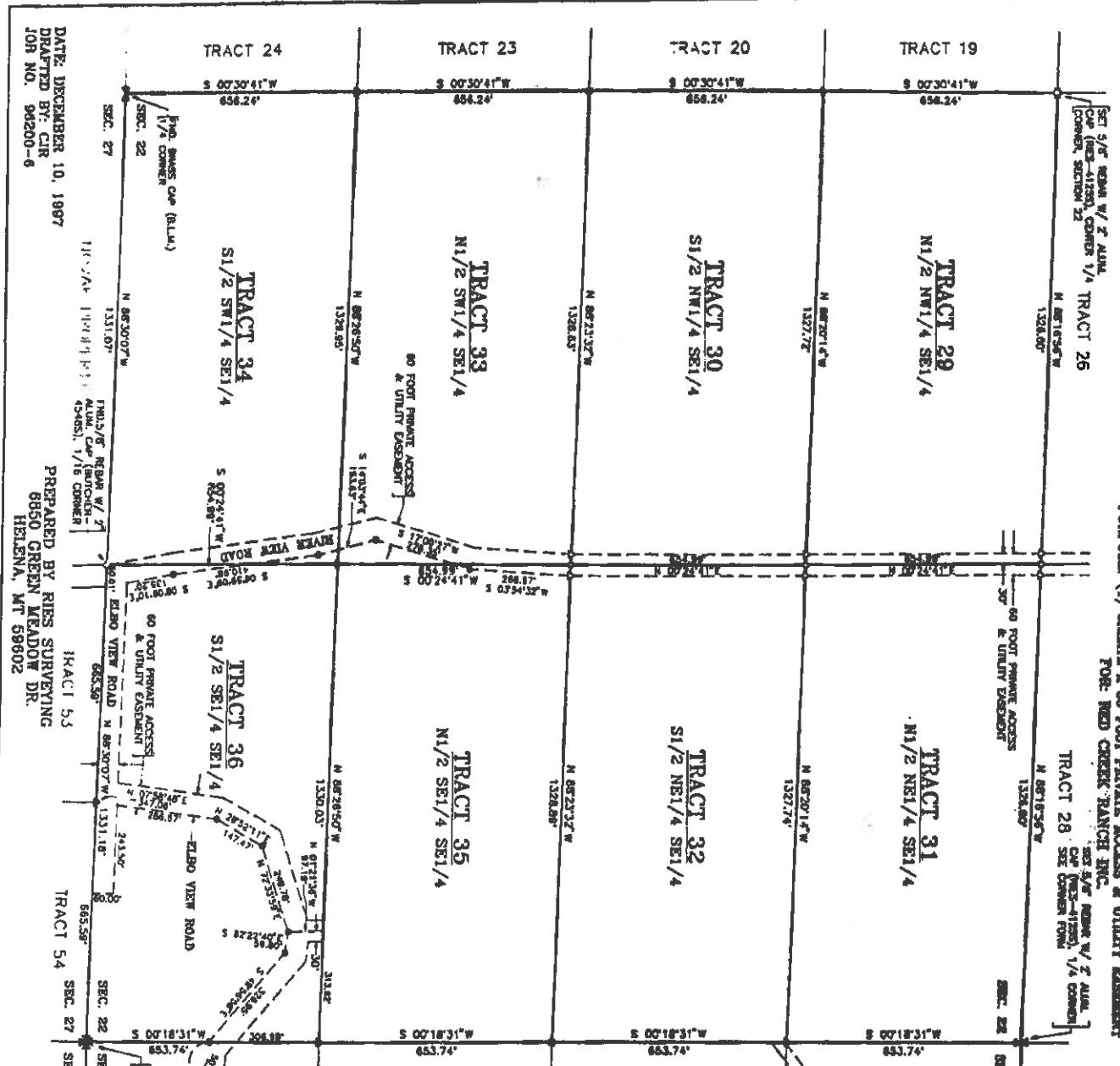
1/4	SEC. 1	R.
22	11N	5W



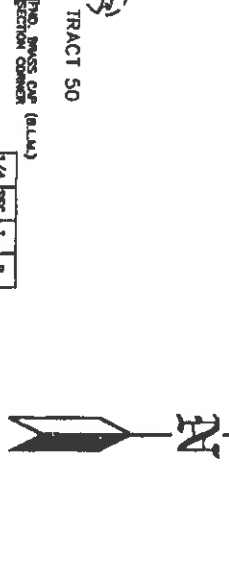
P.M.M. LEWIS AND CLARK CO., MT.
 SHEET 5 OF 9
 CERTIFICATE OF SURVEY NO. _____

CERTIFICATE OF SURVEY

PURPOSE: (1) CREATE A 60 FOOT PRIVATE ACCESS & UTILITY EASEMENT FOR RED CREEK RANCH INC. SET 5/8" BEAR W/ 2" ALUM. CAP (NECS-41280) 1/4 CORNER TRACT 28 SEC CORNER FORM



- LEGEND
- SET 5/8" BEAR W/ 2" ALUM. CAP (NECS-41280)
 - ▲ SET 5/8" BEAR W/ 2" ALUM. CAP (41280 (1/16 CORNER))
 - ▲ SET 5/8" BEAR W/ 1" ALUM. CAP (41280 (1/16 CORNER))
 - ▲ SET 5/8" BEAR W/ 1/2" ALUM. CAP (41280 (1/16 CORNER))
 - ▲ SET 5/8" BEAR W/ 1/4" ALUM. CAP (41280 (1/16 CORNER))
 - SET 5/8" BEAR W/ P.C. (NECS-41280 (1/16 CORNER))
 - SET 5/8" BEAR W/ P.C. (NECS-41280 (1/16 CORNER))
 - CALCULATED POSITION, NOTHING FOUND OR SET
 - BENT-UP-MAY LANE OF PRIVATE ACCESS & UTILITY EASEMENT



1/4	SEC. 1.	R.
22	E1/2	2W
CALIBRIC SCALE - FEET		

P.M.M. LEWIS AND CLARK CO., MT.
 SHEET 8 OF 9
 CERTIFICATE OF SURVEY NO. _____

DATE: DECEMBER 10, 1997
 DRAWN BY: CIR
 JOB NO. 96200-6

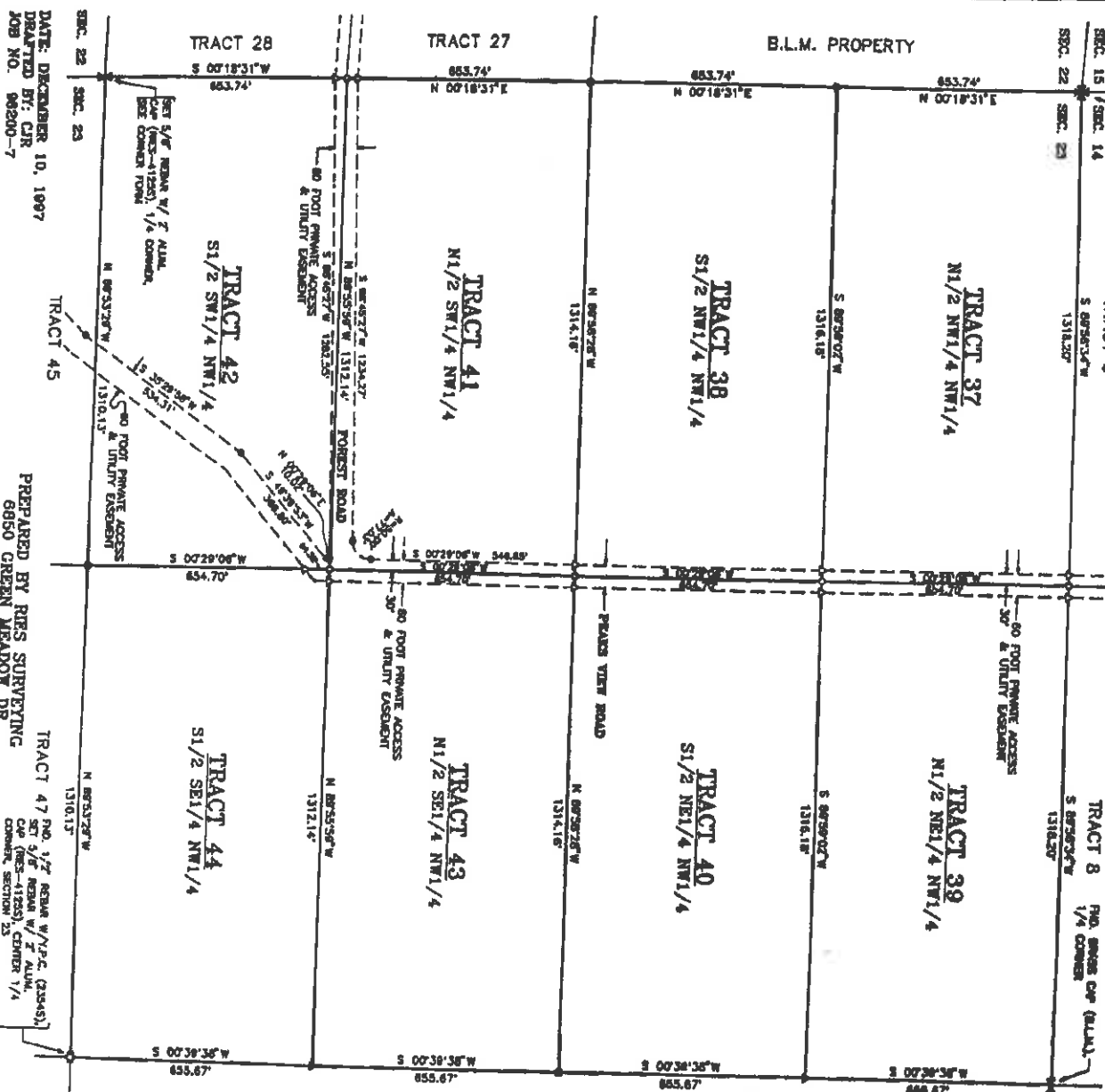
PREPARED BY RUS SURVEYING
 6850 GREEN MEADOW DR.
 HELENA, MT 59602

CERTIFICATE OF SURVEY

PURPOSE: (1) CREATE A 60 FOOT PRIVATE ACCESS & UTILITY EASEMENT FOR: RED CREEK RANCH INC.

Per 3/4" NEAR W/2 C. (234-43), N1/2 S1/2 NW1/4 NW1/4, SEE CORNER PIN, SECTION CORNER, TRACT 6

TRACT 8 PA. GRASS CO. (ALL), 1/4 CORNER, TRACT 8



C.O.S. NO. 259800

- LEGEND**
- SET 5/8" NEAR W/2 C. (PINS-41265)
 - SET 5/8" NEAR W/2 C. (PINS-41265)
 - ▲ SET 5/8" NEAR W/1 1/2 ALUM. CAP (41265 (1/16 CORNER))
 - △ SET 5/8" NEAR W/1 1/2 ALUM. CAP (41265 (1/16 CORNER))
 - ▽ SET 5/8" NEAR W/2 C. (PINS-41265 (1/16 CORNER))
 - ◇ SET 5/8" NEAR W/2 C. (PINS-41265 (1/16 CORNER))
 - CALCULATED POSITION, NOTHING FOUND OR SET
 - BORN-UP-NET LINE OF PRIVATE ACCESS & UTILITY EASEMENT

DATE: DECEMBER 10, 1997
 DRAFTED BY: CJR
 JOB NO. 98200-7

PREPARED BY RRS SURVEYING
 6950 GREEN MEADOW DR.
 HELENA, MT 59602

TRACT 47 PER 3/4" NEAR W/2 C. (234-43),
 SET 3/8" NEAR W/2 C. (PINS-41265) CENTER 1/4
 CORNER, SECTION 23

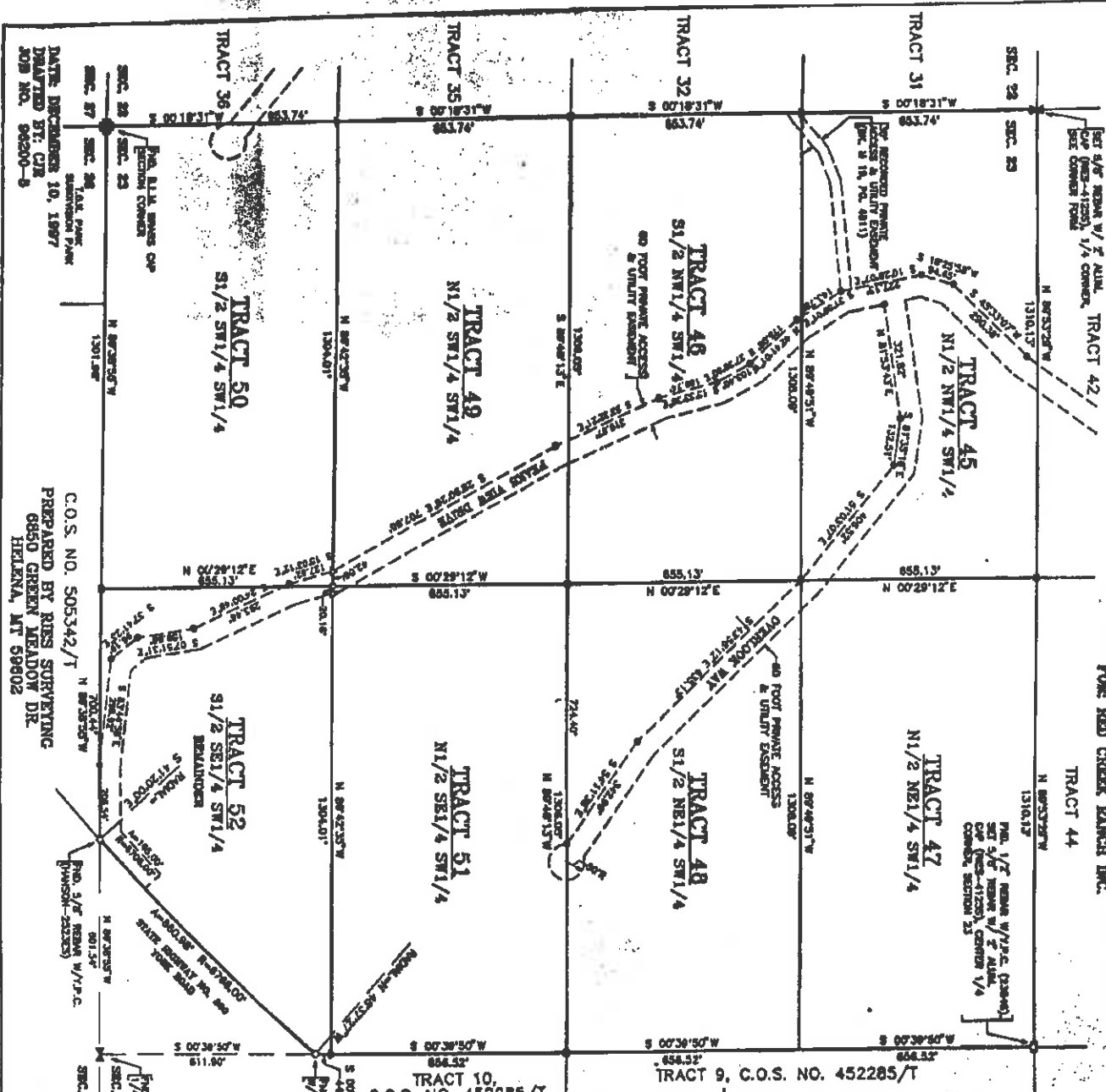
1/4	SEC. 14	R.
1/4	SEC. 15	R.



P.M.M. LEWIS AND CLARK CO., MT.
 SHEET 7 OF 9
 CERTIFICATE OF SURVEY NO. _____

CERTIFICATE OF SURVEY

PURPOSE: (1) CREATE A 60 FOOT PRIVATE ACCESS & UTILITY EASEMENT FROM RED CREEK RANCH INC. TRACT 42/



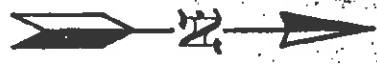
DATE: DECEMBER 10, 1987
DRAWN BY: CR
JOB NO.: 98200-8

C.O.S. NO. 505342/T
PREPARED BY: RISS SURVEYING
6850 GREEN MEADOW DR.
HELENA, MT 59602

- LEGEND:
- SET 5/8" BEAR V/P.P.C. (DMS-41286)
 - SET 5/8" BEAR V/P ALUM. CAP (41285 (1/16 CORN.))
 - SET 5/8" BEAR V/1 1/8" ALUM. CAP (41285 (1/16 COR.))
 - SET 5/8" BEAR V/1 1/8" ALUM. CAP (41285 (COR. 200'))
 - SET 5/8" BEAR V/P.P.C. (DMS-41286 (1/16 CORN.))
 - SET 5/8" BEAR V/P.P.C. (DMS-41286 (1/16 CORN.))
 - CALCULATED POSITION, NOTHING FOUND OR SET
 - - - - - 60-FOOT PRIVATE ACCESS & UTILITY EASEMENT

1/4	SECT. 2	R.
1/2	1/2	1/2
1/4	1/4	1/4

P.M.K. LEWIS AND CLARK CO., MT.
SHEET 8 OF 9
CERTIFICATE OF SURVEY NO. _____



CERTIFICATE OF SURVEY

PURPOSE (1) CREATE A 60 FOOT PRIVATE ACCESS & UTILITY EASEMENT
TRACT 36 FOR RED CREEK RANCH INC.

ELBO VIEW ROAD

5 60'±0.7'±
5 60'±0.7'±

5 60'±0.7'±

5 60'±0.7'±

5 60'±0.7'±

5 60'±0.7'±

5 60'±0.7'±

5 60'±0.7'±

5 60'±0.7'±

5 60'±0.7'±

5 60'±0.7'±

5 60'±0.7'±

5 60'±0.7'±

T.O.K. PARK
SUBDIVISION PARK

LEGEND

- SET 5/8" IRON PIPES W/1/2" DIA. CAPS (1/2" DIA. CAPS)
- SET 5/8" IRON PIPES W/1/4" DIA. ALUM. CAPS (1/4" DIA. CAPS)
- ▲ SET 5/8" IRON PIPES W/1/4" DIA. ALUM. CAPS (1/4" DIA. CAPS)
- PVA CONCRETE E/W SURVEYING
- CALCULATED POSITION, NOTHING FOUND OR SET
- BEAR-OF-BEAR LINE OF PRIVATE ACCESS & UTILITY

CONTRACTOR OF WORK

1. THE UNDERSIGNED HEREBY CERTIFY ALL CORNER MARKS AND DISTANCES TO BE THE CORNER OF TRACT 36.

ON THIS 22ND DAY OF February 1987, BEFORE ME A NOTARY PUBLIC, ROBERT J. BROWN, JR., COUNTY CLERK OF THE COUNTY OF ELK, STATE OF MONTANA, THE PERSONS WHOSE NAMES ARE SUBSCRIBED TO THE VERNAL DECLARATION AND ACKNOWLEDGMENT TO BE THAT HE ENDORSED THE SAME.

ROBERT J. BROWN, JR.
COUNTY CLERK OF THE COUNTY OF ELK, STATE OF MONTANA

NOTARY PUBLIC FOR THE STATE OF MONTANA
RESIDING AT Helena, Montana
MY COMMISSION EXPIRES August 1, 1991

BASES OF BEARING: THE SOUTH LINE OF SECTION 22 (1/4 COR. TO S 1/4 COR.) N 87°20' E, S.L.M. 1969.

LAFRANCE PROPERTY; BK. M 12, PG. 6106

NOVAK PROPERTY

TRACT 53
W1/2 NE1/4 NE1/4

TRACT 54
E1/2 NE1/4 NE1/4

ELBO VIEW DRIVE

60 FOOT PRIVATE ACCESS & UTILITY EASEMENT

PRIVATE ACCESS & UTILITY EASEMENT

FIN. 5/8" IRON W/1/2" ALUM. CAP (1/2" DIA.) W/1/8 CORNER

FIN. 5/8" IRON W/1/2" ALUM. CAP (1/2" DIA.) W/1/8 CORNER

DATE: DECEMBER 10, 1987
DRAWN BY: CHR
JOB NO. 96200-9

TRACT B, C.O.S. NO. 560057/0

TRACT A, C.O.S. NO. 560057/0
PREPARED BY RIBS SURVEYING
6950 GREEN MEADOW DR.
HELENA, MT 59602

1/4	SEC. 1	R
27	11th	28

100	0	100
0	100	0

GRAPHIC SCALE - FEET

P.L.M., LEWIS AND CLARK CO., MT.
SHEET 9 OF 9
CERTIFICATE OF SURVEY NO. _____

