



Flathead County, Source: Esri, Maxar, Earthstar Geographics, and the GIS User Community

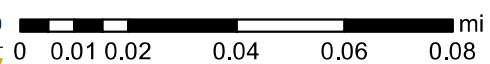
Flathead County
GIS Department



800 South Main Street
Kalispell, Montana 59901



FLYING S
TITLE & ESCROW



THIS MAP IS PROVIDED FOR INFORMATIONAL PURPOSES ONLY. NO ASSURANCES ARE MADE AS TO THE QUANTITY OF THE AREA, SQUARE FOOTAGE, OR ACREAGE OF THE LAND OR OF ANY IMPROVEMENT TO THE LAND.
FLYING S TITLE AND ESCROW

The areas depicted on these maps are for illustrative purposes only and do not necessarily meet mapping, surveying, or engineering standards. Deriving conclusions from this map is done at the user's assumed risk.

1/4	SEC.	TWP.	RGE.
<input checked="" type="checkbox"/>	16	30N	16W
<input checked="" type="checkbox"/>	17	30N	16W
<input checked="" type="checkbox"/>	20	30N	16W
<input checked="" type="checkbox"/>	21	30N	16W

FOR: FLATHEAD NATIONAL FOREST

PURPOSE OF SURVEY: RETRACEMENT
 THIS SURVEY WAS PERFORMED TO ESTABLISH PHYSICAL BOUNDARY LINES BETWEEN FEDERALLY OWNED LAND AND PRIVATE LAND PREVIOUSLY PATENTED IN ACCORDANCE WITH FEDERAL STATUTES. THIS DOES NOT CONSTITUTE A "DIVISION OF LAND" AS DEFINED IN THE MONTANA SUBDIVISION AND PLATTING ACT. THEREFORE THIS CERTIFICATE OF SURVEY IS EXEMPT FROM REVIEW BY THE DEPARTMENT OF HEALTH AND ENVIRONMENTAL SCIENCES AND FLATHEAD COUNTY PLANNING BOARD.

THIS SURVEY WAS MADE AT MY REQUEST FOR NATIONAL FOREST MANAGEMENT PURPOSES.
 for *Ron Van Vatta* 3/2/88
 EDGAR B. BRANNON, JR. DATE
 FOREST SUPERVISOR

LEGAL DESCRIPTION: LEGAL DESCRIPTION DEPICTING THE BOUNDARY BETWEEN NATIONAL FOREST LAND AND PRIVATE LAND BEING HOMESTEAD ENTRY SURVEY NUMBERS 822, 1070 AND A PORTION OF HOMESTEAD ENTRY SURVEY NUMBER 808 IN UNSURVEYED SECTIONS 16, 17, 20 AND 21, TOWNSHIP 30 NORTH, RANGE 16 WEST, PRINCIPAL MERIDIAN MONTANA, FLATHEAD COUNTY, MONTANA.

THE BOUNDARY IS DESCRIBED AS FOLLOWS:

COMMENCING AT CORNER NO. 1 OF H.E.S. NO. 1070, WHICH IS THE TRUE POINT OF BEGINNING OF THE BOUNDARY TO BE DESCRIBED; THENCE N8°19'37"E, 1771.60 FT. TO CORNER NO. 2 OF H.E.S. NO. 1070; THENCE S01°36'23"E, 1834.45 FT. TO CORNER NO. 3 OF H.E.S. NO. 1070 COINCIDENT WITH CORNER NO. 1 OF H.E.S. NO. 822; THENCE S44°31'48"E, 935.14 FT. TO CORNER NO. 2 OF H.E.S. NO. 822; THENCE S89°27'33"E, 1978.15 FT. TO CORNER NO. 3 OF H.E.S. NO. 822 COINCIDENT WITH CORNER NO. 1 OF H.E.S. NO. 808; THENCE S0°55'18"W, 1967.65 FT. TO THE NORTHWEST CORNER OF LOT 9, BLOCK 4 OF WALKER ADDITION IN H.E.S. NO. 808; THENCE S89°03'48"E, 724.72 FT. ALONG THE NORTH BOUNDARY OF WALKER ADDITION TO THE INTERSECTION WITH THE EASTERLY BOUNDARY OF H.E.S. NO. 808 BETWEEN CORNER NO. 4 AND CORNER NO. 5; THENCE S0°02'44"W, 970.45 FT. ALONG SAID BOUNDARY TO CORNER NO. 5 OF H.E.S. NO. 808; THENCE S23°23'58"E, 1692.21 FT. TO CORNER NO. 6 OF H.E.S. NO. 808; THENCE N89°45'26"W, 438.93 FT. TO CORNER NO. 7 OF H.E.S. NO. 808; THENCE N48°14'26"W, 1320.09 FT. TO CORNER NO. 8 OF H.E.S. NO. 808 COINCIDENT WITH CORNER NO. 4 OF H.E.S. NO. 822; THENCE N 49°14'15"W, 2066.93 FT. TO CORNER NO. 5 OF H.E.S. NO. 822; THENCE N30°28'52"W, 2012.54 FT. TO CORNER NO. 6 OF H.E.S. NO. 822 COINCIDENT WITH CORNER NO. 4 OF H.E.S. NO. 1070; THENCE N51°38'39"W, 1455.58 FT. TO CORNER NO. 5 OF H.E.S. NO. 1070; THENCE N19°12'42"W, 1964.56 FT. TO CORNER NO. 1 OF H.E.S. NO. 1070, THE TRUE POINT OF BEGINNING OF THE BOUNDARY DESCRIBED; ALL ACCORDING TO THIS CERTIFICATE OF SURVEY.

NOTES: THIS CERTIFICATE OF SURVEY REPRESENTS A DEPENDENT RESURVEY OF U.S.D.A. HOMESTEAD ENTRY SURVEY NUMBERS 822, 1070 AND A PORTION OF HOMESTEAD ENTRY SURVEY NUMBER 808 IN UNSURVEYED SECTIONS 16, 17, 20 AND 21, TOWNSHIP 30 NORTH, RANGE 16 WEST, P.M.H.

THE BOUNDARY OF NATIONAL FOREST LAND SHOWN ON THIS CERTIFICATE IS MARKED WITH 5/8 INCH DIAMETER BY 18 INCH LONG REBARS SUPPORTING ALUMINUM CAPS STAMPED "USFS LINE MARKER". THE ESTIMATED POSITIONAL TOLERANCE OF LINE MARKERS IS ± 1 FOOT WITH RESPECT TO THE THEORETICAL TRUE LINE. LINE MARKERS ARE REFERENCES FOR THE PROPERTY BOUNDARY AND ARE NOT INTENDED AS CONTROLLING INSTRUMENTS ON THE PROPERTY BOUNDARY LINE. ALL FIELD NOTES, COMPUTATIONS AND "LINE MARKER" LOCATIONS ARE FILED WITH CADASTRAL ENGINEERING, FLATHEAD NATIONAL FOREST, KALISPELL, MONTANA.

POSITIONS FOR CORNERS FOUND AND SET BY THIS SURVEY ARE BASED UPON CLOSED FIELD TRAVERSES USING A TOPCON GUPPY TOTAL STATION, KERN DKM2-AS, THEODOLITE AND KERN 503 E.D.M. EXECUTED IN 1988 AND 1987 BY MARK BURKHART. BASIS OF BEARINGS IS THE HOMESTEAD ENTRY SURVEY RECORD BEARING FROM CORNER NUMBER 3 TO CORNER 4 OF H.E.S. 1070 BEING S0°26'W.

CERTIFICATION: I HEREBY CERTIFY THAT THIS CERTIFICATE OF SURVEY IS A TRUE AND CORRECT REPRESENTATION OF A SURVEY, EXECUTED UNDER MY DIRECT SUPERVISION, COMPLETED IN 1987.

James L. Carter 3/2/88
 JAMES L. CARTER DATE
 REGISTRATION NO. 79725

APPROVED: *James L. Carter*
 EXAMINING LAND SURVEYOR 54285 3/3/87
 REGISTRATION NO. DATE
 COUNTY OF FLATHEAD
 STATE OF MONTANA
 FILED ON THE 3rd DAY OF March 1988 AT 3:40 O'CLOCK P.M.
 COUNTY CLERK AND RECORDER: *Susan W. Hovey*
 BY: *Lynette C. Kaulborn* INSTRUMENT RECORD NO. 8806314400
 CERTIFICATE OF SURVEY NO. 9158 8N/10

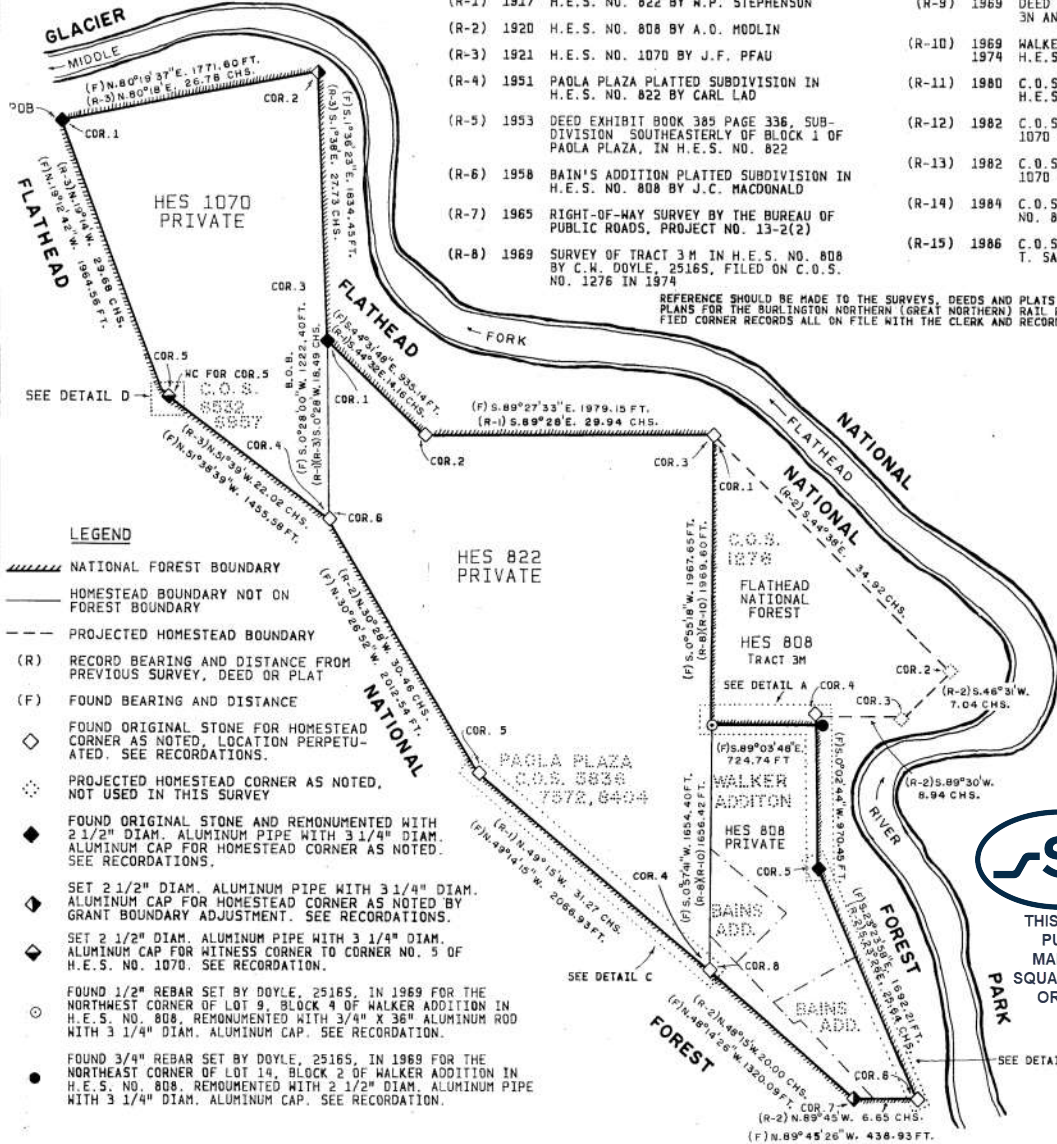
CERTIFICATE OF SURVEY

HOMESTEAD ENTRY SURVEY NOS. 808, 822 AND 1070
 IN UNSURVEYED SECTIONS 16, 17, 20 AND 21
 TOWNSHIP 30 NORTH, RANGE 16 WEST
 PRINCIPAL MERIDIAN MONTANA
 FLATHEAD COUNTY, MONTANA

HISTORY OF SURVEY

- | | |
|--|--|
| (R-1) 1917 H.E.S. NO. 822 BY W.P. STEPHENSON | (R-9) 1969 DEED EXHIBIT BOOK 507 PAGE 930 FOR TRACTS 3N AND 3NA IN H.E.S. NO. 822 |
| (R-2) 1920 H.E.S. NO. 808 BY A.O. MODLIN | (R-10) 1969 WALKER ADDITION PLATTED SUBDIVISION IN H.E.S. NO. 808 BY C.W. DOYLE, 2516S. |
| (R-3) 1921 H.E.S. NO. 1070 BY J.F. PFAU | (R-11) 1980 C.O.S. NO. 5836 FOR TRACTS 3N AND 3NA IN H.E.S. NO. 822 BY A.P. PUTNAM, 4375S. |
| (R-4) 1951 PAOLA PLAZA PLATTED SUBDIVISION IN H.E.S. NO. 822 BY CARL LAD | (R-12) 1982 C.O.S. NO. 6532 IN H.E.S. NOS. 822 AND 1070 BY D.K. MARQUARDT, 2989ES |
| (R-5) 1953 DEED EXHIBIT BOOK 385 PAGE 336, SUB-DIVISION SOUTHEASTERLY OF BLOCK 1 OF PAOLA PLAZA, IN H.E.S. NO. 822 | (R-13) 1982 C.O.S. NO. 6957 IN H.E.S. NOS. 822 AND 1070 BY D.K. MARQUARDT, 2989ES |
| (R-6) 1958 BAIN'S ADDITION PLATTED SUBDIVISION IN H.E.S. NO. 808 BY J.C. MACDONALD | (R-14) 1984 C.O.S. NO. 7572 FOR TRACT 3I IN H.E.S. NO. 822 BY A.P. PUTNAM, 4375S |
| (R-7) 1965 RIGHT-OF-WAY SURVEY BY THE BUREAU OF PUBLIC ROADS, PROJECT NO. 13-2(2) | (R-15) 1986 C.O.S. NO. 8404 IN H.E.S. NO. 822 BY T. SANDS, 7975S, FOR BOUNDARY ADJUSTMENT |
| (R-8) 1969 SURVEY OF TRACT 3M IN H.E.S. NO. 808 BY C.W. DOYLE, 2516S, FILED ON C.O.S. NO. 1276 IN 1974 | |

REFERENCE SHOULD BE MADE TO THE SURVEYS, DEEDS AND PLATS MENTIONED ABOVE, PLANS FOR THE BURLINGTON NORTHERN (GREAT NORTHERN) RAIL ROAD AND TO CERTIFIED CORNER RECORDS ALL ON FILE WITH THE CLERK AND RECORDER OF FLATHEAD CO.



LEGEND

- NATIONAL FOREST BOUNDARY
- HOMESTEAD BOUNDARY NOT ON FOREST BOUNDARY
- - - PROJECTED HOMESTEAD BOUNDARY
- (R) RECORD BEARING AND DISTANCE FROM PREVIOUS SURVEY, DEED OR PLAT
- (F) FOUND BEARING AND DISTANCE
- ◆ FOUND ORIGINAL STONE FOR HOMESTEAD CORNER AS NOTED, LOCATION PERPETUATED. SEE RECORDATIONS.
- ◆ FOUND ORIGINAL STONE AND REMONUMENTED WITH 2 1/2" DIAM. ALUMINUM PIPE WITH 3 1/4" DIAM. ALUMINUM CAP FOR HOMESTEAD CORNER AS NOTED. SEE RECORDATIONS.
- ◆ SET 2 1/2" DIAM. ALUMINUM PIPE WITH 3 1/4" DIAM. ALUMINUM CAP FOR HOMESTEAD CORNER AS NOTED BY GRANT BOUNDARY ADJUSTMENT. SEE RECORDATIONS.
- ◆ SET 2 1/2" DIAM. ALUMINUM PIPE WITH 3 1/4" DIAM. ALUMINUM CAP FOR WITNESS CORNER TO CORNER NO. 5 OF H.E.S. NO. 1070. SEE RECORDATION.
- FOUND 1/2" REBAR SET BY DOYLE, 2516S, IN 1969 FOR THE NORTHWEST CORNER OF LOT 9, BLOCK 4 OF WALKER ADDITION IN H.E.S. NO. 808, REMONUMENTED WITH 3/4" X 36" ALUMINUM ROD WITH 3 1/4" DIAM. ALUMINUM CAP. SEE RECORDATION.
- FOUND 3/4" REBAR SET BY DOYLE, 2516S, IN 1969 FOR THE NORTHEAST CORNER OF LOT 14, BLOCK 2 OF WALKER ADDITION IN H.E.S. NO. 808, REMONUMENTED WITH 2 1/2" DIAM. ALUMINUM PIPE WITH 3 1/4" DIAM. ALUMINUM CAP. SEE RECORDATION.



THIS MAP IS PROVIDED FOR INFORMATIONAL PURPOSES ONLY. NO ASSURANCES ARE MADE AS TO THE QUANTITY OF THE AREA, SQUARE FOOTAGE, OR ACREAGE OF THE LAND OR OF ANY IMPROVEMENT TO THE LAND.
 FLYING S TITLE AND ESCROW

FILE IN SEC 17

CERTIFICATE OF SURVEY

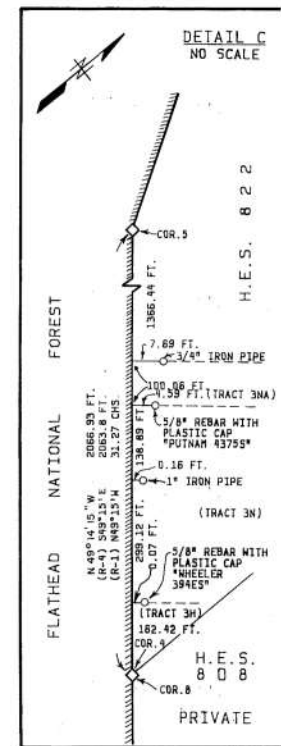
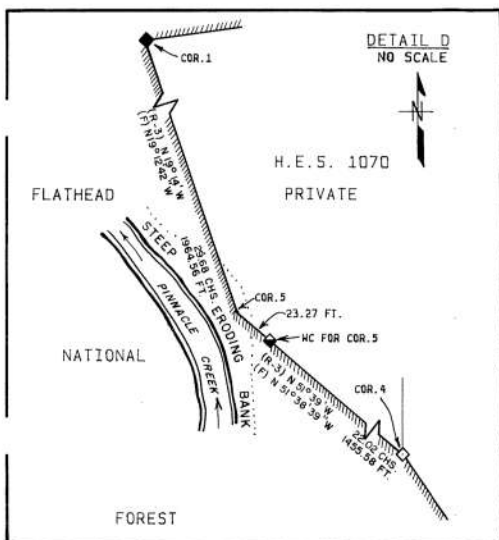
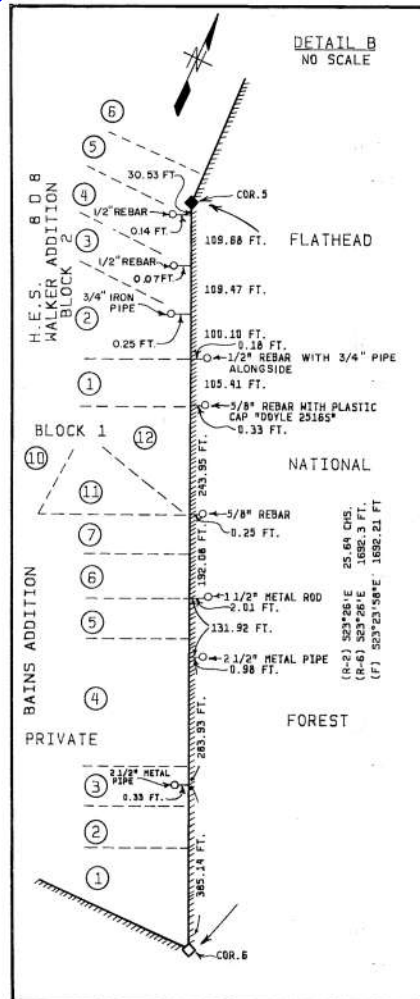
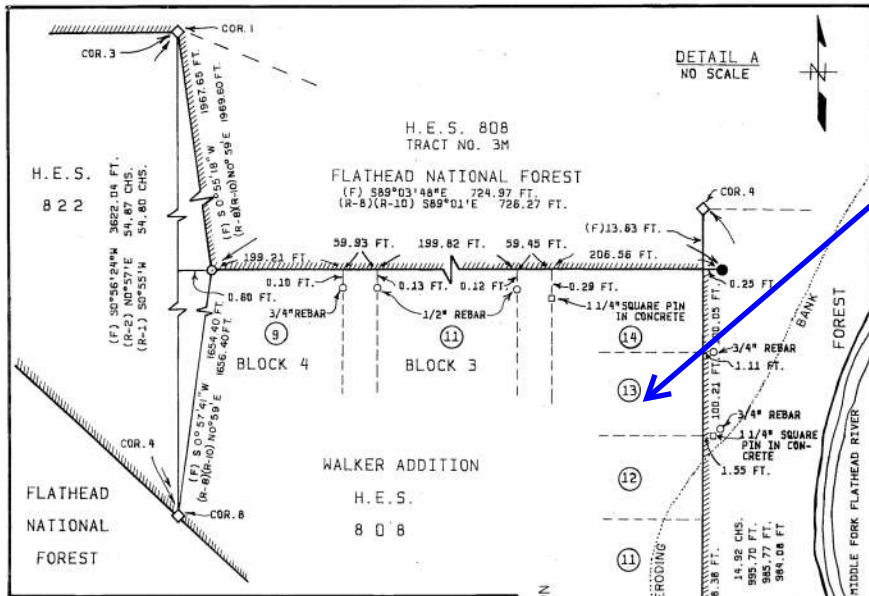
HOMESTEAD ENTRY SURVEY NOS. 808, 822 AND 1070
 IN UNSURVEYED SECTIONS 16, 17, 20 AND 21
 TOWNSHIP 30 NORTH, RANGE 16 WEST
 PRINCIPAL MERIDIAN MONTANA
 FLATHEAD COUNTY, MONTANA

LEGEND

- ===== NATIONAL FOREST BOUNDARY
- HOMESTEAD BOUNDARY NOT ON FOREST BOUNDARY
- PROJECTED HOMESTEAD OR LOT BOUNDARY
- (R) RECORD BEARING AND DISTANCE FROM PREVIOUS SURVEY, DEED OR PLAT
- (F) FOUND BEARING AND DISTANCE
- ◇ FOUND ORIGINAL STONE FOR HOMESTEAD CORNER AS NOTED. LOCATIONS PERPETUATED. SEE RECORDATIONS.
- ◆ FOUND ORIGINAL STONE AND REMONUMENTED WITH 2 1/2" DIAM. ALUMINUM PIPE WITH 3 1/4" DIAM. ALUMINUM CAP FOR HOMESTEAD CORNER AS NOTED. SEE RECORDATION.

- ◆ SET 2 1/2" DIAM. ALUMINUM PIPE WITH 3 1/4" DIAM. ALUMINUM CAP FOR WITNESS CORNER TO CORNER NO. 5 OF H.E.S. NO. 1070. SEE RECORDATION.
- FOUND 1/2" REBAR SET BY DOYLE, 25165, IN 1969 FOR THE NORTHWEST CORNER OF LOT 9, BLOCK 4 OF WALKER ADDITION IN H.E.S. NO. 808, REMONUMENTED WITH 3/4" X 36" ALUMINUM ROD WITH 3 1/4" DIAM. ALUMINUM CAP. SEE RECORDATION.
- FOUND 3/4" REBAR SET BY DOYLE, 25165, IN 1969 FOR THE NORTHEAST CORNER OF LOT 14, BLOCK 2 OF WALKER ADDITION IN H.E.S. NO. 808, REMONUMENTED WITH 2 1/2" DIAM. ALUMINUM PIPE WITH 3 1/4" DIAM. ALUMINUM CAP. SEE RECORDATION.
- ○ FOUND SURVEY MARKER AS NOTED.
- ⑬ LOT NUMBER.

SUBJECT

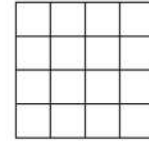


COS 9/58

FILE IN SEC. 17

16 30 16

SCALE 1" = 400'



THIS MAP IS PREPARED ONLY FOR THE ADMINISTRATIVE USE OF FLATHEAD COUNTY AND IS NOT NECESSARILY AN ACCURATE REPRESENTATION OF THE LOCATION OR EXISTENCE OF TRACTS OF RECORD, THEIR BOUNDARIES OR EASEMENTS AND ROADWAYS.



FLYING S

TITLE & ESCROW

THIS MAP IS PROVIDED FOR INFORMATIONAL PURPOSES ONLY. NO ASSURANCES ARE MADE AS TO THE QUANTITY OF THE AREA, SQUARE FOOTAGE, OR ACREAGE OF THE LAND OR OF ANY IMPROVEMENT TO THE LAND.
FLYING S TITLE AND ESCROW

SURVEYS OF RECORD

HES 808
C.S.

1276- 3M RTMT
9158- E22, 888 RTMT

HES 822
C.S.

285/197- 3 RTMT
328/471- 3DB

19- 3BD

1572- 3I RTMT

3406- 3I/LS

9158- HES 822 RTMT

10746- 3, 3P W HES 822 OCC SALE

11957- 3 EASE

12444- PADLA PLAZA L1A B1 RTMT

12726- PADLA PLAZA L3 A, B1 RTMT

13695- 3, 3I RTMT

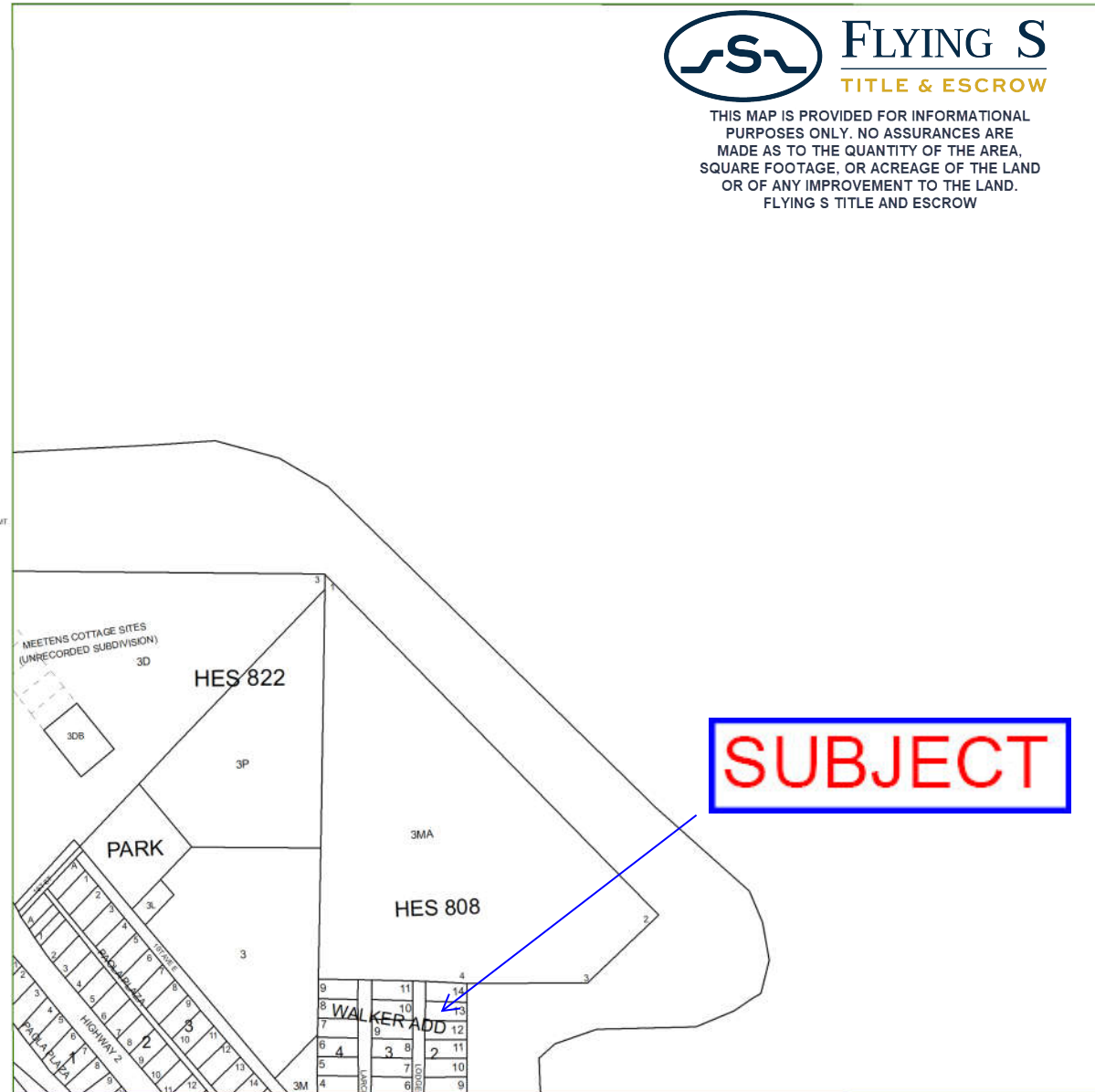
15384- PADLA PLAZA L12 B1 RTMT

17975- PADLA PLAZA L4 3, B1 RTMT

18993- PADLA PLAZA L14, 15 W2, B3 RTMT

20828- PADLA PLAZA L1, 7 B3 RTMT

21886- PADLA PLAZA L12, 13 B3 AND W20, 13 B2 RTMT



SUBJECT