
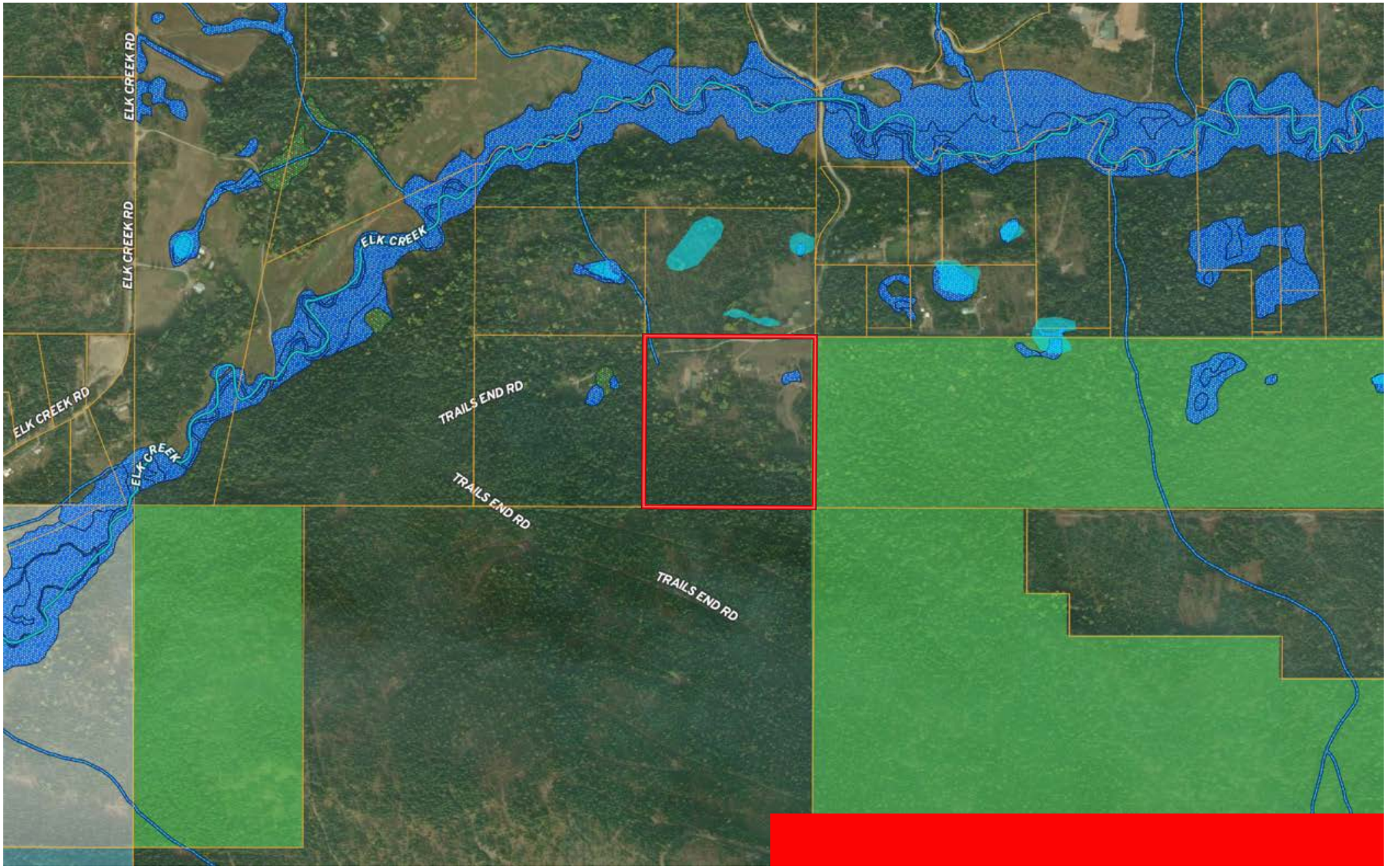




-  Boundary
-  Forest Service
-  State Land
-  Fish and Wildlife
-  National Park
-  Other
-  BLM
-  Local Government
-  Conservation

11 Trails End Drive

Sanders County, Montana, 40 AC +/-



- Boundary
- Forest Service
- State Land
- Fish and Wildlife
- National Park
- Other
- BLM
- Local Government
- Conservation
- Wetlands
- Riparian
- Stream, Intermittent
- River/Creek
- Water Body