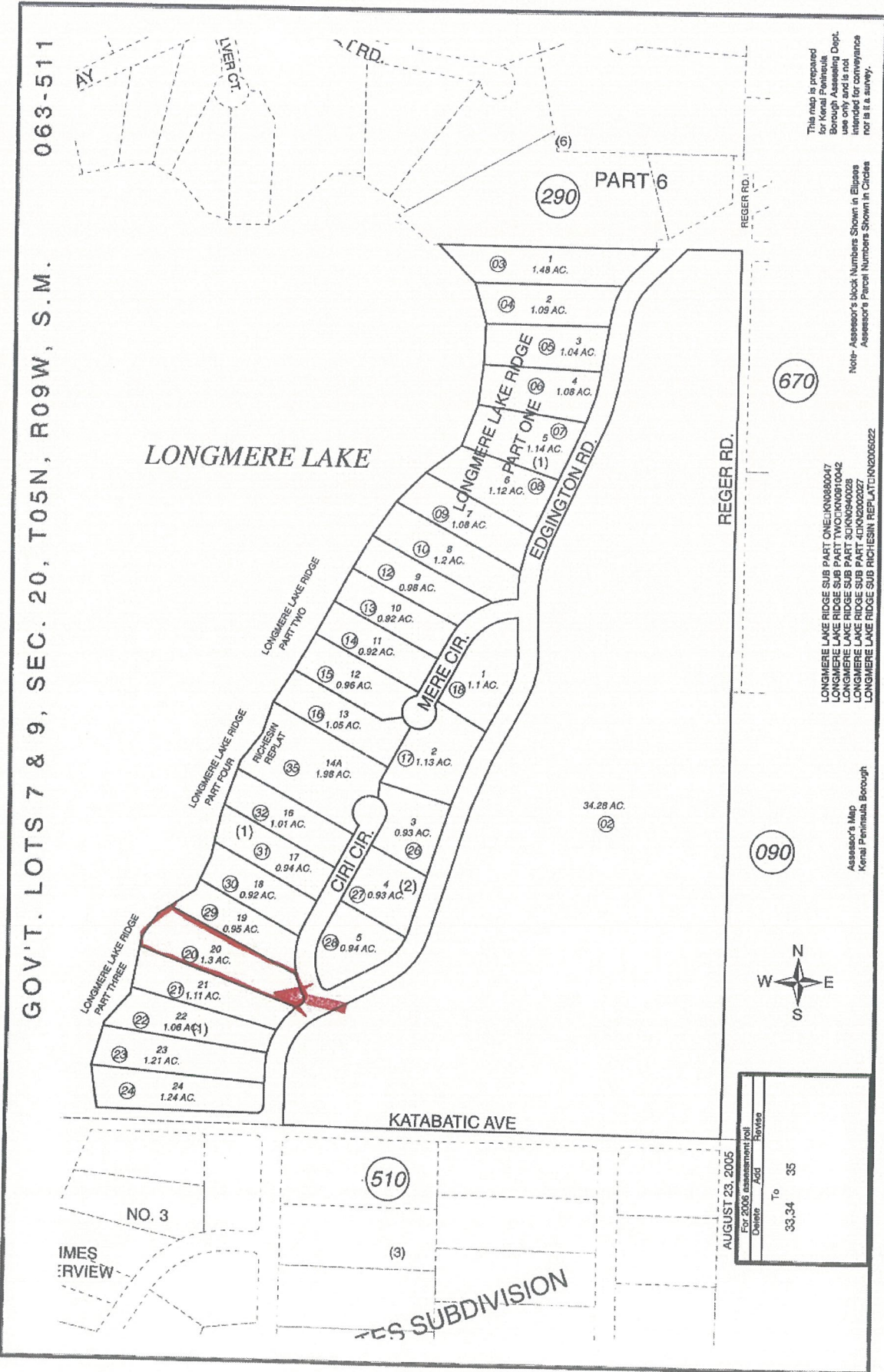


063-511

GOV'T. LOTS 7 & 9, SEC. 20, T05N, R09W, S.M.



This map is prepared for  
 for Kern Peninsula  
 Borough Assessing Dept.  
 use only and is not  
 intended for conveyance  
 nor is it a survey.

Note: Assessor's block Numbers Shown in Ellipse  
 Assessor's Parcel Numbers Shown in Circle

LONGMERE LAKE RIDGE SUB PART ONE: KN0900047  
 LONGMERE LAKE RIDGE SUB PART TWO: KN0901042  
 LONGMERE LAKE RIDGE SUB PART THREE: KN0904028  
 LONGMERE LAKE RIDGE SUB PART FOUR: KN0905027

Assessor's Map  
 Kern Peninsula Borough



AUGUST 23, 2005	
For 2006 assessment roll	
Debate	Review
To	33,34 35