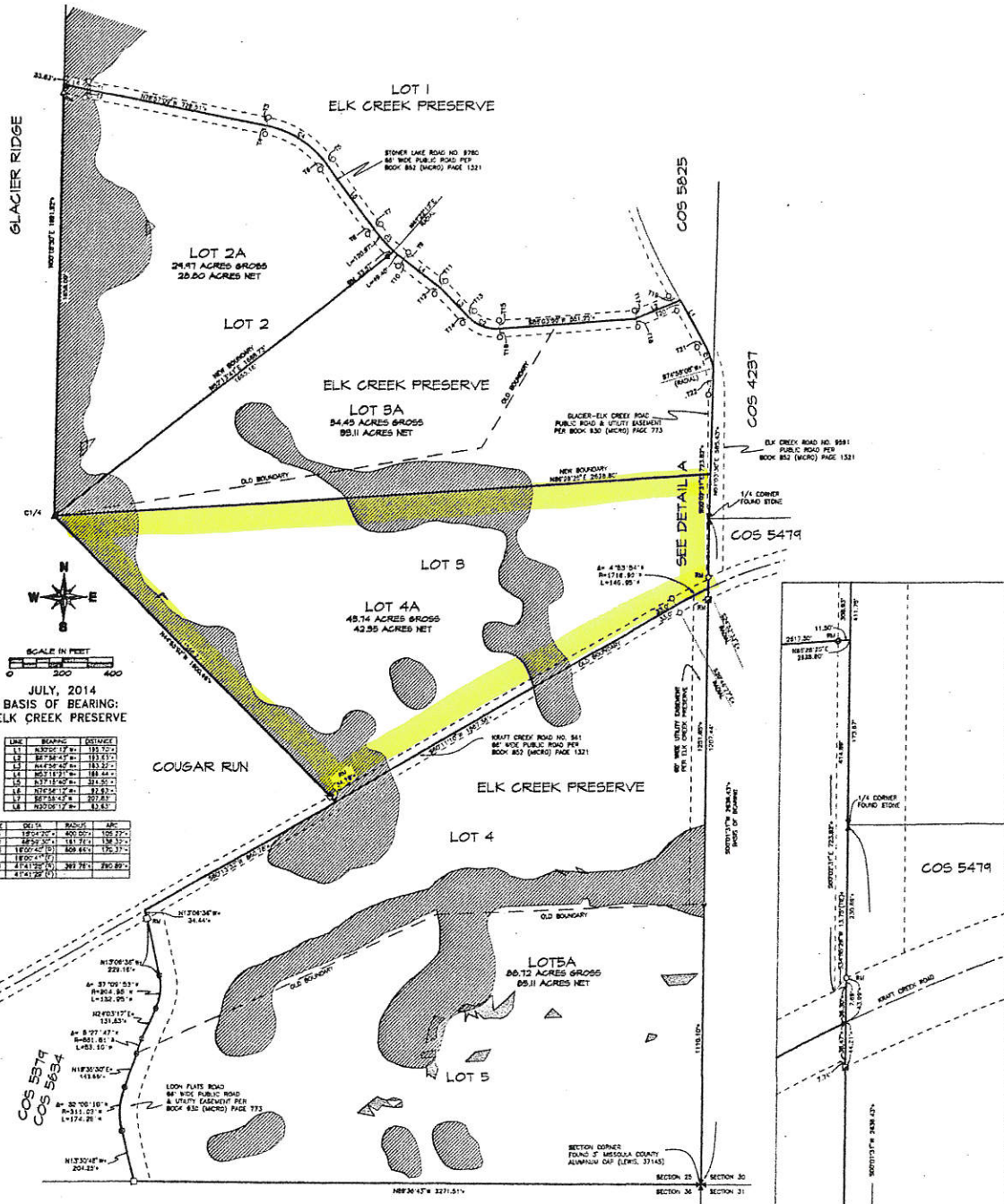


AMENDED PLAT OF ELK CREEK PRESERVE, LOTS 2, 3, 4 AND 5

AN AMENDED PLAT DEPICTING THE RELOCATION OF COMMON BOUNDARIES LOCATED IN
THE EAST ONE-HALF OF SECTION 25, T20N, R17W, PMM, MISSOULA COUNTY, MONTANA



JULY, 2014
BASIS OF BEARING:
ELK CREEK PRESERVE

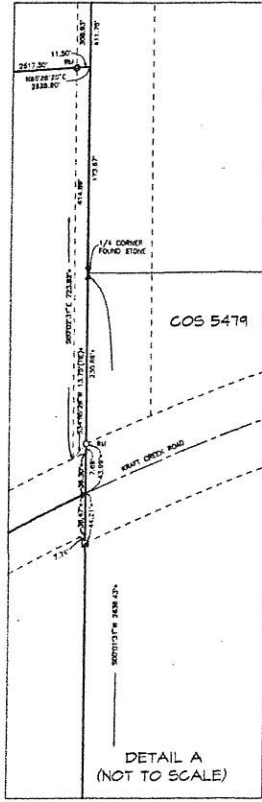
LINE	BEARING	DISTANCE
1	N 11° 12' 30" E	135.25
2	S 78° 30' 00" W	113.23
3	S 42° 00' 00" W	133.25
4	S 82° 15' 00" W	188.44
5	S 71° 15' 00" W	188.44
6	S 71° 15' 00" W	188.44
7	S 71° 15' 00" W	188.44
8	S 71° 15' 00" W	188.44
9	S 71° 15' 00" W	188.44
10	S 71° 15' 00" W	188.44
11	S 71° 15' 00" W	188.44
12	S 71° 15' 00" W	188.44

LINE	BEARING	DISTANCE
13	S 71° 15' 00" W	188.44
14	S 71° 15' 00" W	188.44
15	S 71° 15' 00" W	188.44
16	S 71° 15' 00" W	188.44
17	S 71° 15' 00" W	188.44
18	S 71° 15' 00" W	188.44
19	S 71° 15' 00" W	188.44
20	S 71° 15' 00" W	188.44
21	S 71° 15' 00" W	188.44
22	S 71° 15' 00" W	188.44

LINE	BEARING	DISTANCE
23	S 71° 15' 00" W	188.44
24	S 71° 15' 00" W	188.44
25	S 71° 15' 00" W	188.44
26	S 71° 15' 00" W	188.44
27	S 71° 15' 00" W	188.44
28	S 71° 15' 00" W	188.44
29	S 71° 15' 00" W	188.44
30	S 71° 15' 00" W	188.44
31	S 71° 15' 00" W	188.44
32	S 71° 15' 00" W	188.44
33	S 71° 15' 00" W	188.44
34	S 71° 15' 00" W	188.44
35	S 71° 15' 00" W	188.44
36	S 71° 15' 00" W	188.44
37	S 71° 15' 00" W	188.44
38	S 71° 15' 00" W	188.44
39	S 71° 15' 00" W	188.44
40	S 71° 15' 00" W	188.44

- LEGEND**
- = SET 5/8"x24" REBAR WITH 1-1/2" ALUM. CAP (DUMONT, 126715)
 - = FOUND 1-1/2" ALUMINUM CAP (DUMONT, 126715)
 - ⊙ = FOUND 1-1/4" YPC (DUMONT, 126715) AS REFERENCE MONUMENT
 - ⊚ = FOUND 1-1/2" ALUMINUM CAP (ANSWORTH, 29235)
 - ⊛ = FOUND 1-1/4" YPC (ANSWORTH, 29235)
 - ⊜ = FOUND 1-1/4" RPC (MARTINSEN, 41245)
 - ⊝ = FOUND 1-1/4" YPC (MARTINSEN, 41245)
 - ⊞ = FOUND 3-1/4" ALUMINUM CAP (ANSWORTH, 29235)
 - + = RECORD AND FOUND PER ELK CREEK PRESERVE
 - YPC = YELLOW PLASTIC CAP
 - RPC = RED PLASTIC CAP
 - RM = REFERENCE MONUMENT
 - FM = FOUND THIS SURVEY
 - R = RECORD PER ELK CREEK PRESERVE

- = RIPARIAN RESOURCE AREA. NO-BUILD, NO-DISTURBANCE ZONE PER ELK CREEK PRESERVE
- = SLOPES > 25%. NO-BUILD/NO-DISTURBANCE ZONE PER ELK CREEK PRESERVE



OWNERS:
RONALD C. IVERSON
ROSS A. IVERSON

PLAT 204185 P. 25 P. 98 Page 1
BY ORDER OF THE REGISTERED PROFESSIONAL ENGINEERS AND SURVEYORS OF MONTANA
SAC Book 933 Page 1009
OR Book 933 Page 1010
CTP Book 933 Page 1011