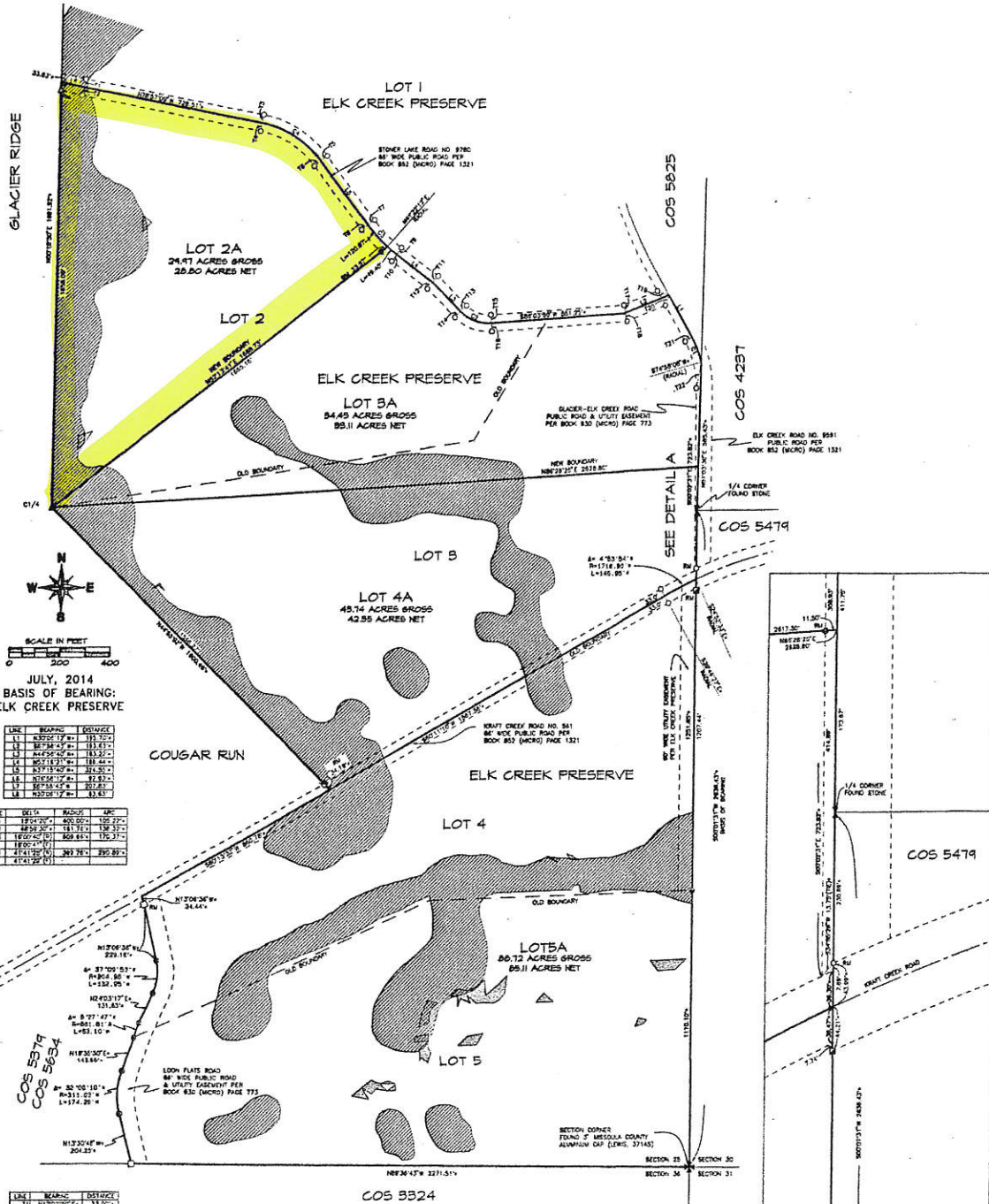


# AMENDED PLAT OF ELK CREEK PRESERVE, LOTS 2, 3, 4 AND 5

AN AMENDED PLAT DEPICTING THE RELOCATION OF COMMON BOUNDARIES LOCATED IN  
THE EAST ONE-HALF OF SECTION 25, T20N, R17W, PMM, MISSOULA COUNTY, MONTANA



JULY, 2014  
BASIS OF BEARING:  
ELK CREEK PRESERVE

LINE	BEARING	DISTANCE
11	N 11° 00' 00" E	115.7074
12	S 87° 34' 21" W	113.4317
13	N 44° 02' 00" E	115.7074
14	S 01° 12' 21" W	181.4417
15	N 27° 15' 40" W	284.2517
16	N 03° 04' 17" E	32.1517
17	S 87° 34' 21" W	207.2517
18	N 03° 04' 17" E	115.7074

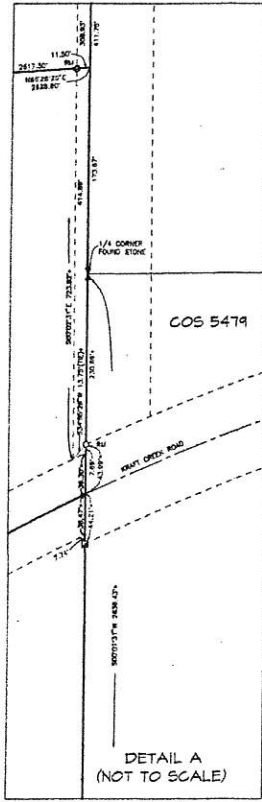
LINE	BEARING	DISTANCE
19	N 03° 04' 17" E	115.7074
20	S 87° 34' 21" W	113.4317
21	N 44° 02' 00" E	115.7074
22	S 01° 12' 21" W	181.4417
23	N 27° 15' 40" W	284.2517
24	N 03° 04' 17" E	32.1517
25	S 87° 34' 21" W	207.2517
26	N 03° 04' 17" E	115.7074

LINE	BEARING	DISTANCE
27	N 03° 04' 17" E	115.7074
28	S 87° 34' 21" W	113.4317
29	N 44° 02' 00" E	115.7074
30	S 01° 12' 21" W	181.4417
31	N 27° 15' 40" W	284.2517
32	N 03° 04' 17" E	32.1517
33	S 87° 34' 21" W	207.2517
34	N 03° 04' 17" E	115.7074
35	S 87° 34' 21" W	113.4317
36	N 44° 02' 00" E	115.7074
37	S 01° 12' 21" W	181.4417
38	N 27° 15' 40" W	284.2517
39	N 03° 04' 17" E	32.1517
40	S 87° 34' 21" W	207.2517
41	N 03° 04' 17" E	115.7074
42	S 87° 34' 21" W	113.4317
43	N 44° 02' 00" E	115.7074
44	S 01° 12' 21" W	181.4417
45	N 27° 15' 40" W	284.2517
46	N 03° 04' 17" E	32.1517
47	S 87° 34' 21" W	207.2517
48	N 03° 04' 17" E	115.7074
49	S 87° 34' 21" W	113.4317
50	N 44° 02' 00" E	115.7074
51	S 01° 12' 21" W	181.4417
52	N 27° 15' 40" W	284.2517
53	N 03° 04' 17" E	32.1517
54	S 87° 34' 21" W	207.2517
55	N 03° 04' 17" E	115.7074
56	S 87° 34' 21" W	113.4317
57	N 44° 02' 00" E	115.7074
58	S 01° 12' 21" W	181.4417
59	N 27° 15' 40" W	284.2517
60	N 03° 04' 17" E	32.1517
61	S 87° 34' 21" W	207.2517
62	N 03° 04' 17" E	115.7074
63	S 87° 34' 21" W	113.4317
64	N 44° 02' 00" E	115.7074
65	S 01° 12' 21" W	181.4417
66	N 27° 15' 40" W	284.2517
67	N 03° 04' 17" E	32.1517
68	S 87° 34' 21" W	207.2517
69	N 03° 04' 17" E	115.7074
70	S 87° 34' 21" W	113.4317
71	N 44° 02' 00" E	115.7074
72	S 01° 12' 21" W	181.4417
73	N 27° 15' 40" W	284.2517
74	N 03° 04' 17" E	32.1517
75	S 87° 34' 21" W	207.2517
76	N 03° 04' 17" E	115.7074
77	S 87° 34' 21" W	113.4317
78	N 44° 02' 00" E	115.7074
79	S 01° 12' 21" W	181.4417
80	N 27° 15' 40" W	284.2517
81	N 03° 04' 17" E	32.1517
82	S 87° 34' 21" W	207.2517
83	N 03° 04' 17" E	115.7074
84	S 87° 34' 21" W	113.4317
85	N 44° 02' 00" E	115.7074
86	S 01° 12' 21" W	181.4417
87	N 27° 15' 40" W	284.2517
88	N 03° 04' 17" E	32.1517
89	S 87° 34' 21" W	207.2517
90	N 03° 04' 17" E	115.7074
91	S 87° 34' 21" W	113.4317
92	N 44° 02' 00" E	115.7074
93	S 01° 12' 21" W	181.4417
94	N 27° 15' 40" W	284.2517
95	N 03° 04' 17" E	32.1517
96	S 87° 34' 21" W	207.2517
97	N 03° 04' 17" E	115.7074
98	S 87° 34' 21" W	113.4317
99	N 44° 02' 00" E	115.7074
100	S 01° 12' 21" W	181.4417

- LEGEND**
- = SET 6/8"x24" REBAR WITH 1-1/2" ALUM. CAP (DUMONT, 126715)
  - = FOUND 1-1/2" ALUMINUM CAP (DUMONT, 126715)
  - ⊙ = FOUND 1-1/4" YPC (DUMONT, 126715) AS REFERENCE MONUMENT
  - ⊕ = FOUND 1-1/2" ALUMINUM CAP (AINSWORTH, 29235)
  - △ = FOUND 1-1/4" YPC (AINSWORTH, 29235)
  - ⊖ = FOUND 1-1/4" YPC (MARTINSEN, 41245)
  - = FOUND 1-1/4" YPC (MARTINSEN, 41245)
  - ▲ = FOUND 3-1/4" ALUMINUM CAP (AINSWORTH, 29235)
  - + = RECORD AND FOUND PER ELK CREEK PRESERVE
  - = YELLOW PLASTIC CAP
  - YPC = RED PLASTIC CAP
  - Rh = REFERENCE MONUMENT
  - F = FOUND THIS SURVEY
  - R = RECORD PER ELK CREEK PRESERVE

- = RIPARIAN RESOURCE AREA: NO-BUILD, NO-DISTURBANCE ZONE PER ELK CREEK PRESERVE
- = SLOPES > 25%: NO-BUILD/NO-DISTURBANCE ZONE PER ELK CREEK PRESERVE

OWNERS:  
RONALD C. IVERSON  
ROSS A. IVERSON



PLAT 704148  
SAC Book 933 Page 1009  
OR Book 933 Page 1010  
CTP Book 933 Page 1011