

"This plat is provided solely for the purpose of assisting in locating the land and the company assumes no liability for variations, if any, with actual survey." Fidelity Title Agency of Lake County

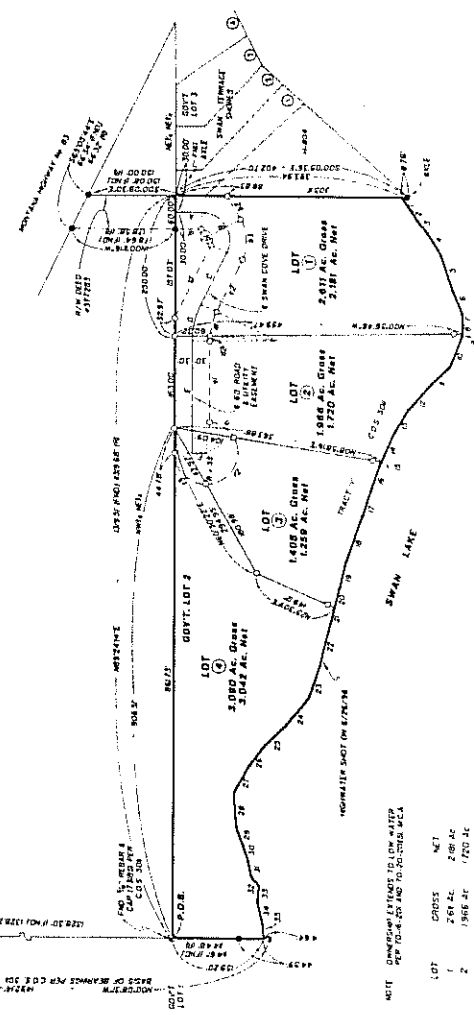
PLAT OF "WHISPERING SWAN COVE" A SUBDIVISION LOCATED IN GOV'T LOT 2 SEC 24 T26N, R19W, P.M.A., LAKE CO



FROM THE OFFICE OF: HERMAN LAND SURVEY  
SOMERS, VT 05532  
14081 R57-3563

FOR: BOITTE, CLYDE & BARBARA  
DATE: SEPTEMBER 6, 1986  
PURPOSE: MINOR SUBDIVISION

SCALE: 1" = 40'



**CERTIFICATE OF DEDICATION**

We, the undersigned platting owner, do hereby certify that we have caused to be accepted and platting as shown by the annexed plat, to wit:

A tract of land in Government Lot 2 of Section 24, Township 26 North, Range 19 West, and County of Lake, Vermont, described as follows: Commencing at the southeast corner of said Section 24, a distance of 144.35 feet to the beginning of the line of land herein described, thence S 89° 59' 45\"/>

**CERTIFICATE OF RESERVE NUMBER**

The number shown on this plat, is intended to be private in all respects, and no person is intended to be bound by the same, unless he has been authorized in writing by the undersigned platting owner, to do so.

**CERTIFICATE OF COUNTY COMMISSIONERS**

We, the undersigned Board of County Commissioners and the County Clerk and the County Auditor, do hereby certify that we have examined the plat and the same in full, and find that the same complies with all the provisions of the Act in this behalf amended, and that the same has been filed in the County Clerk's office, and we do hereby certify that the same has been approved by the Board of County Commissioners and the County Clerk and the County Auditor.

**CERTIFICATE OF NOTARY**

County of [blank] State of Vermont

On this 20th day of September, 1987, before me a Notary Public in and for the State of Vermont, personally appeared CLYDE BOITTE and BARBARA BOITTE, the undersigned platting owner, who are known to me to be the persons whose names are subscribed to the foregoing instrument, and the said instrument is in the hands of the said CLYDE BOITTE and BARBARA BOITTE, and they acknowledged to me that they executed the same for the purposes and consideration therein expressed.

**CERTIFICATE OF COUNTY COMMISSIONERS**

We, the undersigned Board of County Commissioners and the County Clerk and the County Auditor, do hereby certify that we have examined the plat and the same in full, and find that the same complies with all the provisions of the Act in this behalf amended, and that the same has been filed in the County Clerk's office, and we do hereby certify that the same has been approved by the Board of County Commissioners and the County Clerk and the County Auditor.

**CERTIFICATE OF COUNTY TREASURER**

We, the undersigned County Treasurer, do hereby certify that we have examined the plat and the same in full, and find that the same complies with all the provisions of the Act in this behalf amended, and that the same has been filed in the County Clerk's office, and we do hereby certify that the same has been approved by the Board of County Commissioners and the County Clerk and the County Auditor.

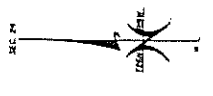
**NET DECREASE IN AREA TO ADJUST AREA**

LOT	COURSE	NET
1	2.84 AC	2.96 AC
2	1.86 AC	1.720 AC
3	1.409 AC	1.283 AC
4	3.630 AC	3.082 AC
5	3.673 AC	3.032 AC
TOTAL	9.479 AC	8.032 AC

**40. ROAD & UTILITY BOUNDARY INFORMATION**

COURSE	BEARING	DISTANCE	COURSE	BEARING	DISTANCE
1	S 89° 59' 45\"/>				

COURSE	BEARING	DISTANCE	COURSE	BEARING	DISTANCE
1	S 89° 59' 45\"/>				



LEGEND

- SECTION CORNER AS WITH
- 1/4 CORNER AS WITH
- CENTER SECTION AS WITH
- 1/4 CORNER AS WITH
- FOUND BY MARGIE C. CAP/MSB
- FOUND BY MARGIE C. CAP/MSB
- FOUND BY MARGIE C. CAP/MSB
- FOUND BY MARGIE C. CAP/MSB

DATE: 9/13/87

BY: MARGIE C. CAP/MSB

