

**SEPARATION REVISIONS**

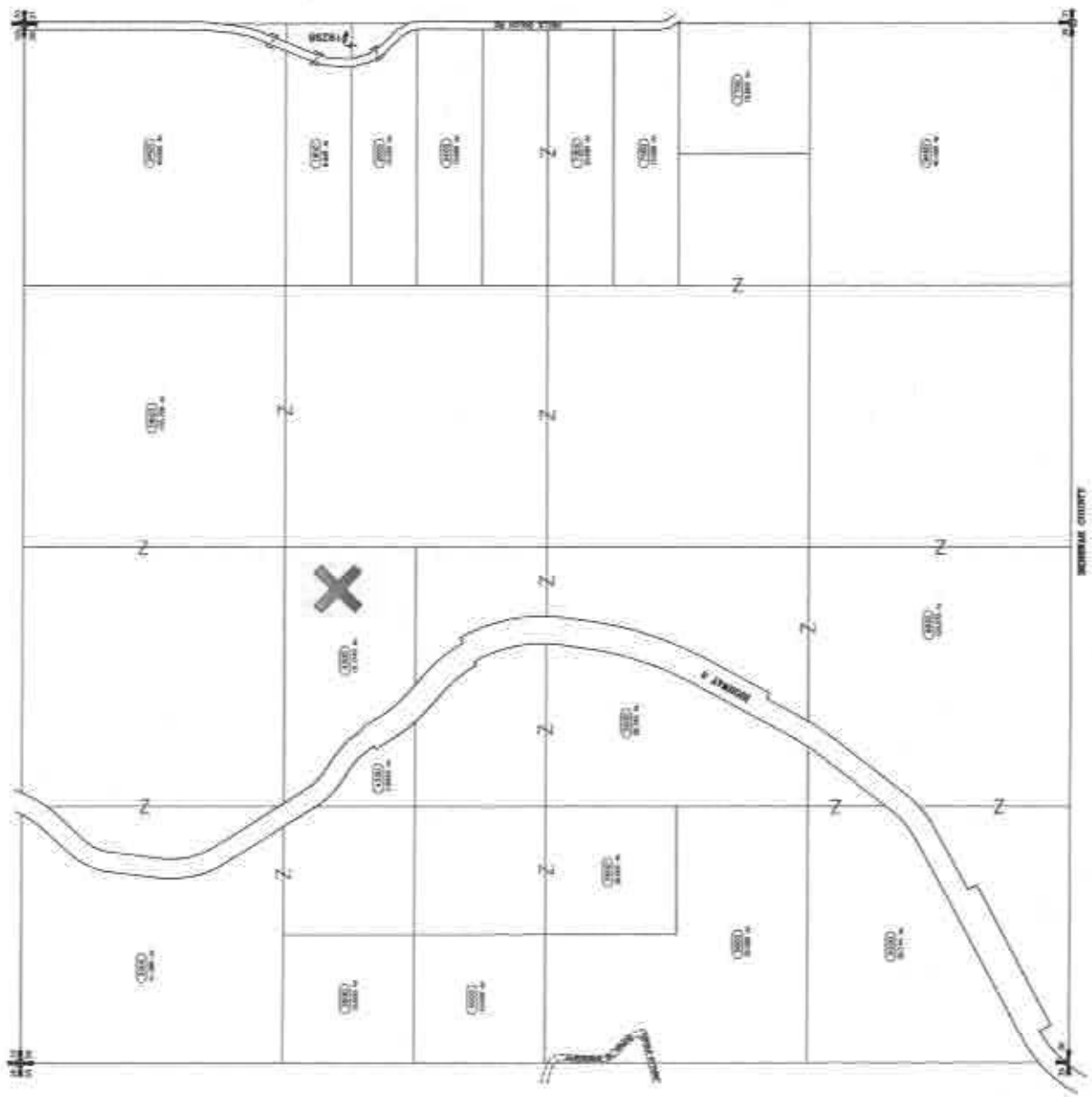
The information on this sheet is for the purpose of showing the location of the various features shown on the map. It is not intended to show the location of the various features shown on the map. It is not intended to show the location of the various features shown on the map.

04/08/02 - JGJ  
 01/09/03 - SLM  
 01/09/03 - SLM

THIS SHEET IS PART OF A SET OF SHEETS WHICH TOGETHER WITH THE SHEETS OF THE SURVEY OF THE LANDS OF THE STATE OF ILLINOIS, SHOWS THE LOCATION OF THE VARIOUS FEATURES SHOWN ON THE MAP. IT IS NOT INTENDED TO SHOW THE LOCATION OF THE VARIOUS FEATURES SHOWN ON THE MAP.

**Sec. 36 Twp. 47 N. R. 3 W. B. M.**

97N03W-36



**ARCHIVE REVISIONS**

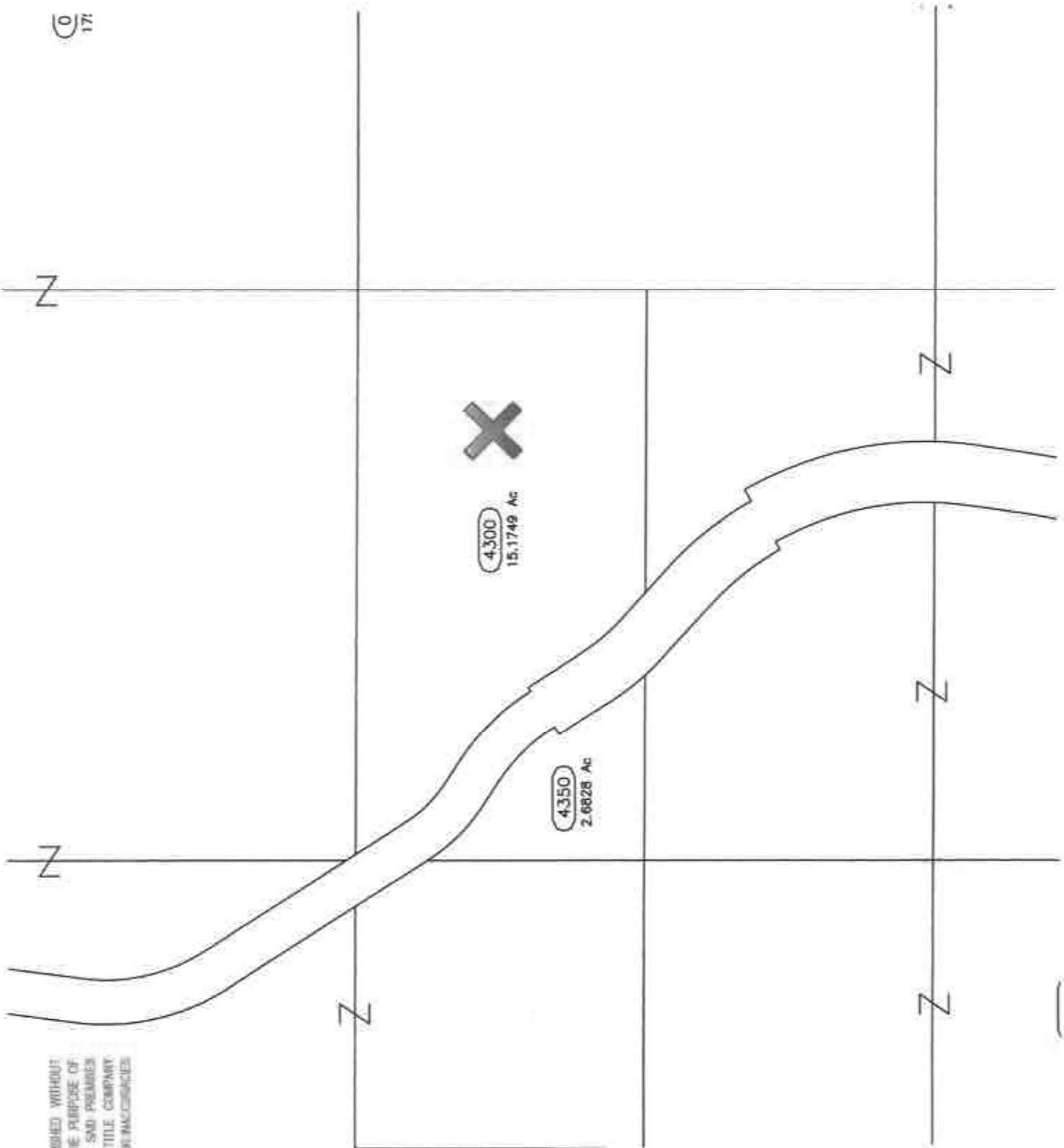
DATE	BY	REVISION
04/08/02	JGJ	...
01/09/03	SLM	...
01/09/03	SLM	...

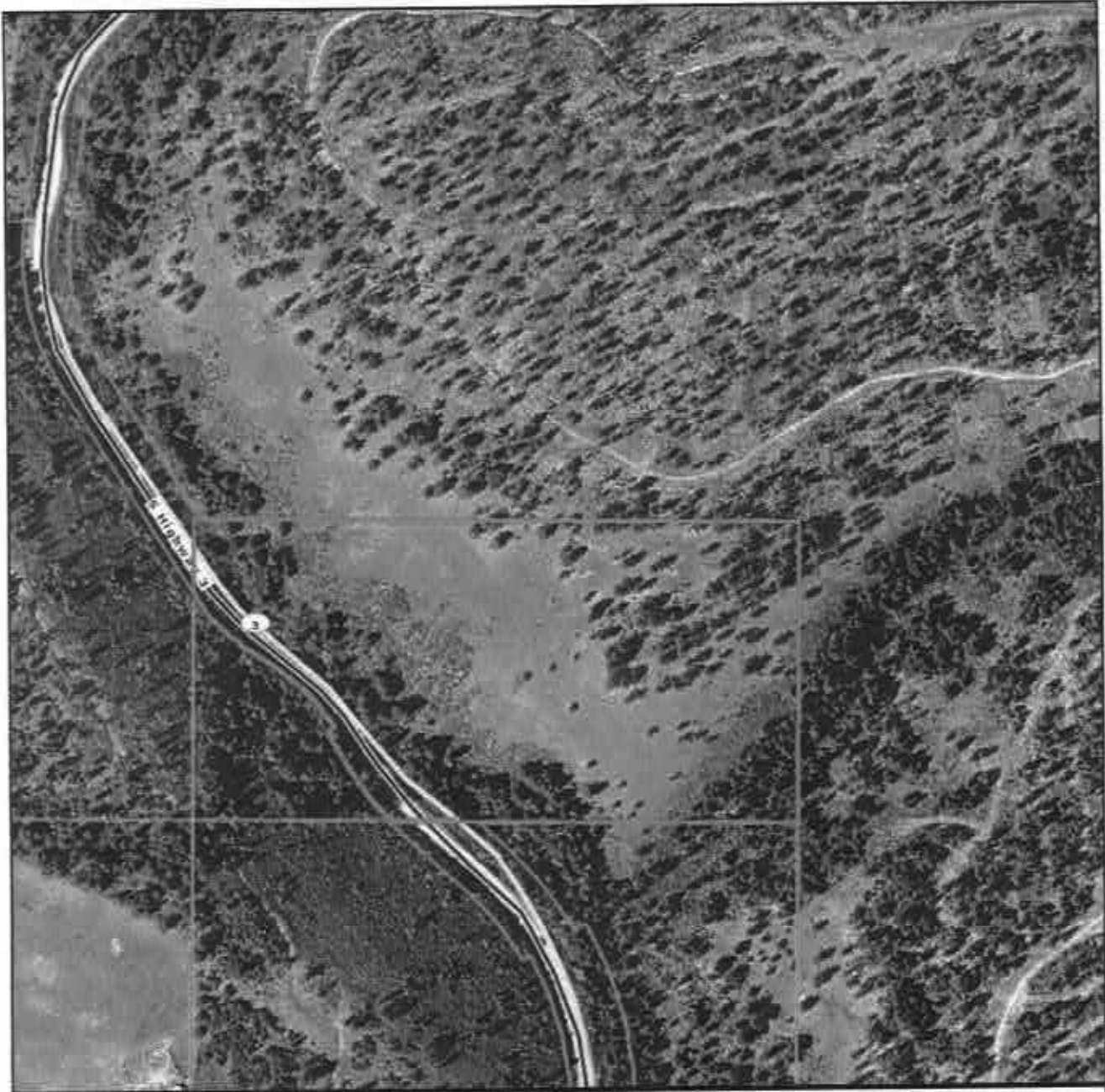
**NOTES:**

1. THIS SHEET IS PART OF A SET OF SHEETS WHICH TOGETHER WITH THE SHEETS OF THE SURVEY OF THE LANDS OF THE STATE OF ILLINOIS, SHOWS THE LOCATION OF THE VARIOUS FEATURES SHOWN ON THE MAP. IT IS NOT INTENDED TO SHOW THE LOCATION OF THE VARIOUS FEATURES SHOWN ON THE MAP.

2. THE LOCATION OF THE VARIOUS FEATURES SHOWN ON THE MAP IS INDICATED BY THE 'X' SYMBOLS.

THIS SKETCH IS FURNISHED WITHOUT  
CHARGE SOLELY FOR THE PURPOSE OF  
ASSISTING IN LOCATING SAID PREMISES  
AND FIRST AMERICAN TITLE COMPANY  
ASSUMES NO LIABILITY FOR INACCURACIES  
THEREIN.





**First American Title Company**  
1866 N. Lakewood Drive  
Coeur d'Alene, ID 83814  
Phone: 208-667-0567  
Fax: 208-667-0832

Sentry Dynamics, Inc. and its customers make no representations, warranties or conditions, express or implied, as to the accuracy or completeness of information contained in this report.

**geoAdvantage**  
[www.sentrydynamics.net](http://www.sentrydynamics.net)

Harrison "Y"

57

Property with Pad

3 Miles of Improved Logging Road Access

MP 93 Large Pulcūt, Entrance through Locked Gate Stimson Property.

3

Parkline

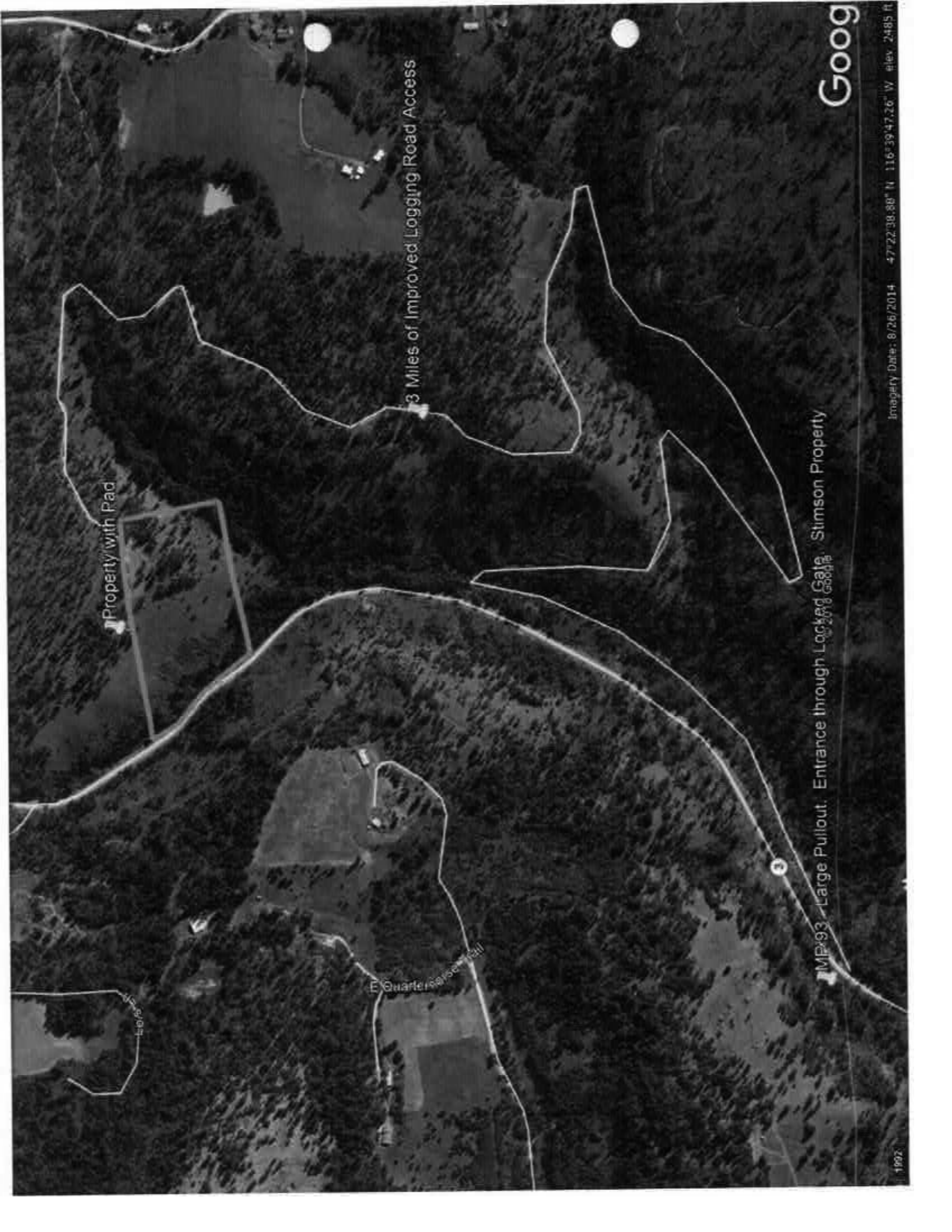
5

St. Maries  
St. Maries

© 2017 Google

Goog

Imagery Date: 6/20/2017 47°21'45.28" N 116°36'32.52" W, elev. 2615 ft



Property with Rad

3 Miles of Improved Logging Road Access

E Quarter Section 11

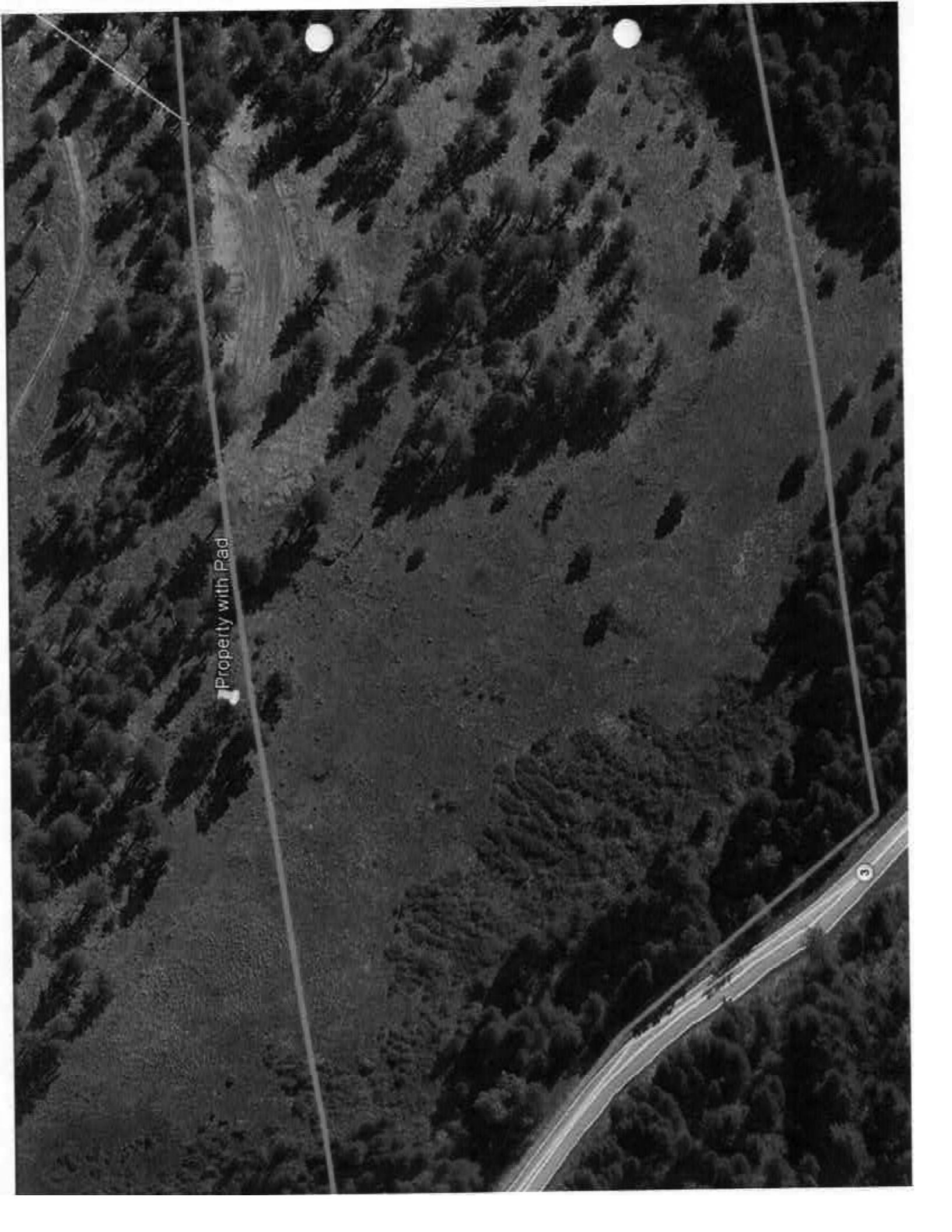
MP#93 Large Pullout. Entrance through Locked Gate. Stimson Property

Goog

Imagery Date: 8/26/2014 47°22'38.86" N 116°39'47.26" W Elev. 2485 ft

1992





Property with Rad