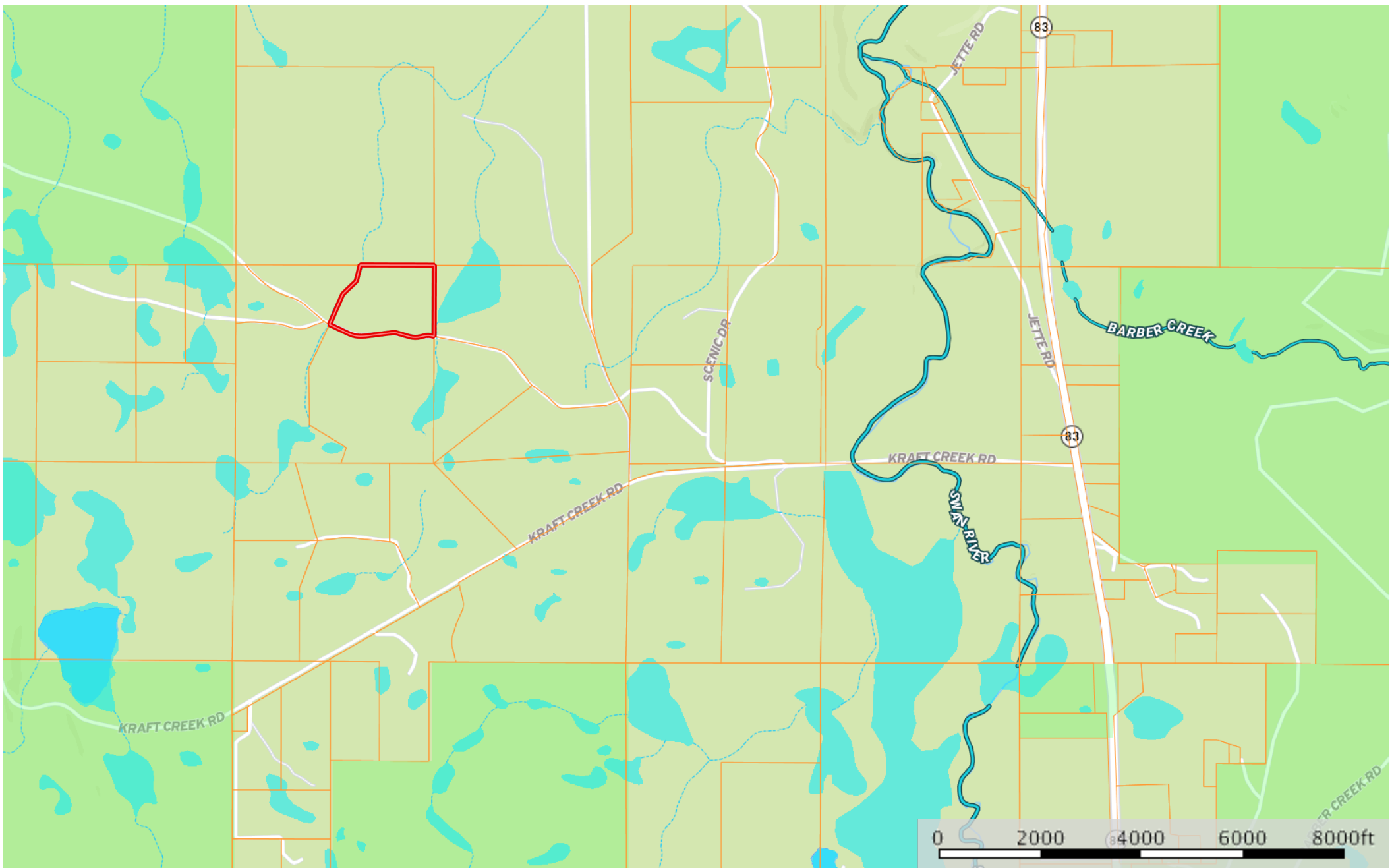



# Terres- 1034 Stoner Lake Rd

Missoula County, Montana, 25.78 AC +/-



- Boundary
- Forest Service
- State Land
- Fish and Wildlife
- National Park
- Other
- BLM
- Stream, Intermittent
- River/Creek
- Water Body

 The information contained herein was obtained from sources deemed to be reliable. MapRight Services makes no warranties or guarantees as to the completeness or accuracy thereof.