

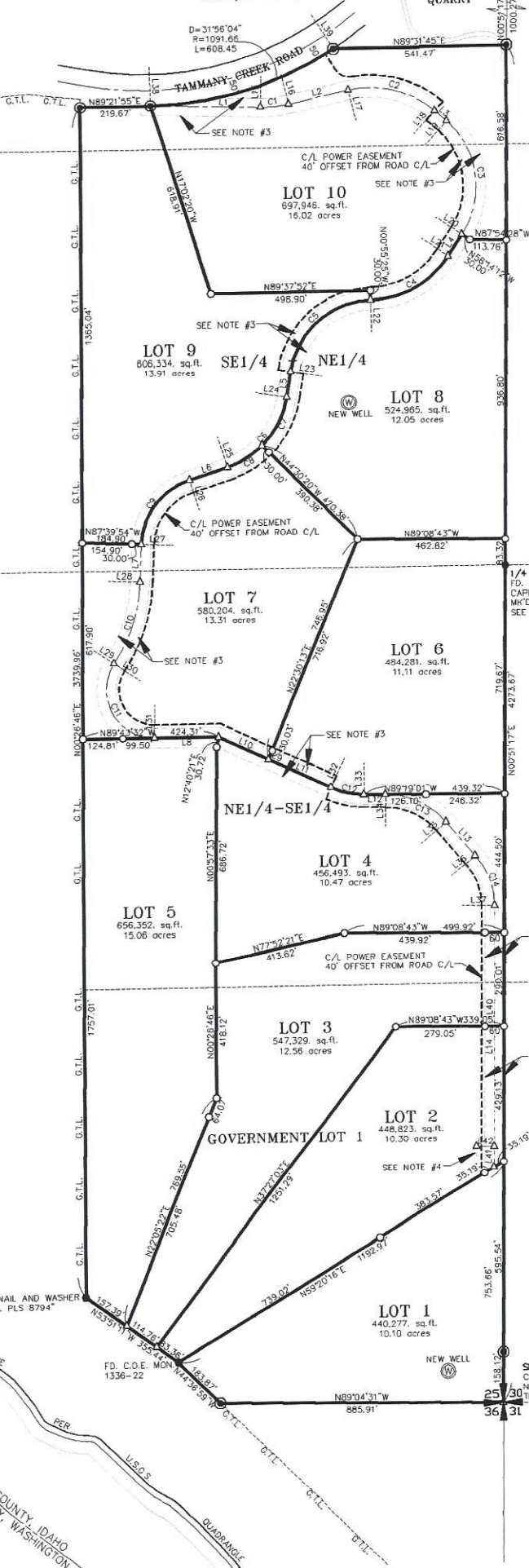
NE1/4-NE1/4

TAMMANY QUARRY

SECTION CORNER
FD. CONC. MONUMENT
W/ C.O.E. BRASS CAP.
SEE C.P.F.#430659.

GOVERNMENT LOT 1

NW1/4-NE1/4



LOT 10
697,946 sq.ft.
16.02 acres

LOT 9
806,334 sq.ft.
13.91 acres

LOT 8
524,965 sq.ft.
12.05 acres

LOT 7
580,204 sq.ft.
13.31 acres

LOT 6
484,281 sq.ft.
11.11 acres

LOT 4
456,493 sq.ft.
10.47 acres

LOT 5
656,352 sq.ft.
15.06 acres

LOT 3
547,329 sq.ft.
12.56 acres

LOT 2
448,823 sq.ft.
10.30 acres

LOT 1
440,277 sq.ft.
10.10 acres

U.S. ARMY CORPS OF ENGINEERS
"HELLS GATE STATE PARK"
SHEET 17 AND 18, LOWER GRANITE LOCK AND DAM,
MONUMENTED PROJECT BOUNDARY, FILE NO GDC-0-0-1/18,
DATED AUGUST, 1978, ON FILE WITH THE U.S. ARMY CORP.
OF ENGINEERS, WALLA WALLA DISTRICT.

GOVERNMENT LOT 2

GOVERNMENT LOT 2

GOVERNMENT LOT 3

GOVERNMENT LOT 4

SECTION CORNER
CALCULATED LOCATION ONLY.
NO CORNER FOUND NOR SET
THIS SURVEY. SEE C.P.F.#742023

SNAKE RIVER

NEZ PERCE COUNTY, IDAHO
ASOTIN COUNTY, WASHINGTON