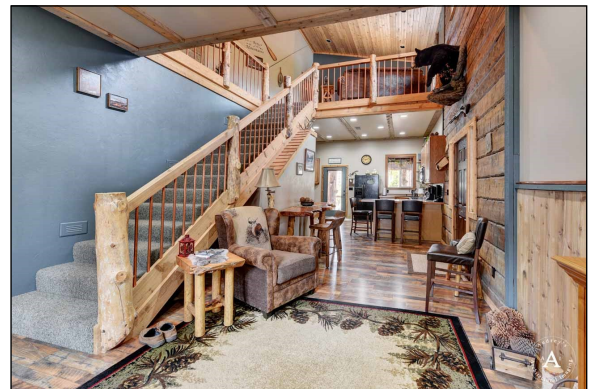
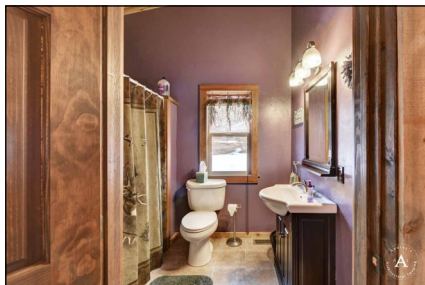


Big Belt Mountain Cabin

4423 Jimtown Rd, Helena - \$359,900



2 Bedrooms, 2 1/2 Baths, 1740 Sq. Ft. Home

Rare opportunity to live the Montana Recreation dream and still be just 20 minutes from Helena. Borders Bureau of Rec land and US Forest Service land. Minutes away from Canyon Ferry Lake and Hauser Lake. Hunt and hike right out your door. Walk to the Missouri River/ Hauser Lake to fish. Completely move-in ready, immaculate home. This beautiful cabin would make a great weekend getaway or full-time home.

This home offers endless recreational options both on and off the property. House can accommodate groups as it offers several entertainment areas, so everyone has room to spread out and enjoy themselves. Room for RVs and Camping. Heated garage for your fishing/sport boat or your toys. Some furnishings and household items may be negotiable.

MIKE KOWALSKI, Realtor

Mike@CMPMontana.com

406.461.5799



CMPMontana.com

Property Details

MLS# 300972

2017 Taxes: \$3010.38

Garage: Large single car attached garage with room to store your fishing/sport boat.

Firepit

Hiking Trails

10.62-Acre Lot

Heating: Propane Gas Forced Air

Web-Enabled Security System

Well Info: 736' Deep, Static Level 400'

Sewer: Septic

Make Your Montana Memories



Enjoy your morning coffee on the large wrap around deck. After a day of playing, head out for a great steak at nearby restaurants. Then finish the day telling stories around the fire pit. Perfect place to make your special Montana memories.

Easy to get to and easy to leave. Just show up and play. Fly into Helena in the morning and cast your line in the afternoon or get ready to go hunt. Then lock and go. Security system in place to monitor property while you are gone.



Enjoy life in the wild with the safety and convenience of being 20 minutes from town. Less than 2 miles off main road on a county-maintained road.

MIKE KOWALSKI, Realtor

Mike@CMPMontana.com

406.461.5799

