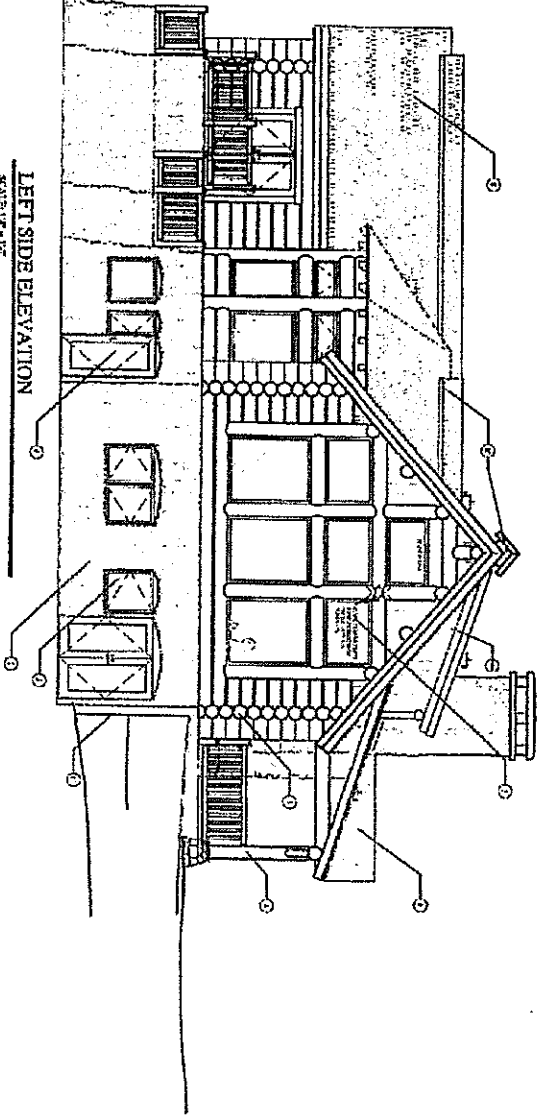


FRONT ELEVATION  
SCALE 1/8" = 1'-0"

**EXTERIOR MATERIAL NOTES**  
1-1000 EXTERIOR WALLS  
1-2000 EXTERIOR ROOFING  
1-3000 EXTERIOR FLOORING  
1-4000 EXTERIOR CEILING  
1-5000 EXTERIOR TRIM  
1-6000 EXTERIOR PAINT  
1-7000 EXTERIOR LIGHTING  
1-8000 EXTERIOR PLUMBING  
1-9000 EXTERIOR ELECTRICAL  
1-10000 EXTERIOR MECHANICAL  
1-11000 EXTERIOR LANDSCAPE  
1-12000 EXTERIOR SITEWORK  
1-13000 EXTERIOR UTILITIES  
1-14000 EXTERIOR FINISHES  
1-15000 EXTERIOR DETAILS



LEFT SIDE ELEVATION  
SCALE 1/8" = 1'-0"

