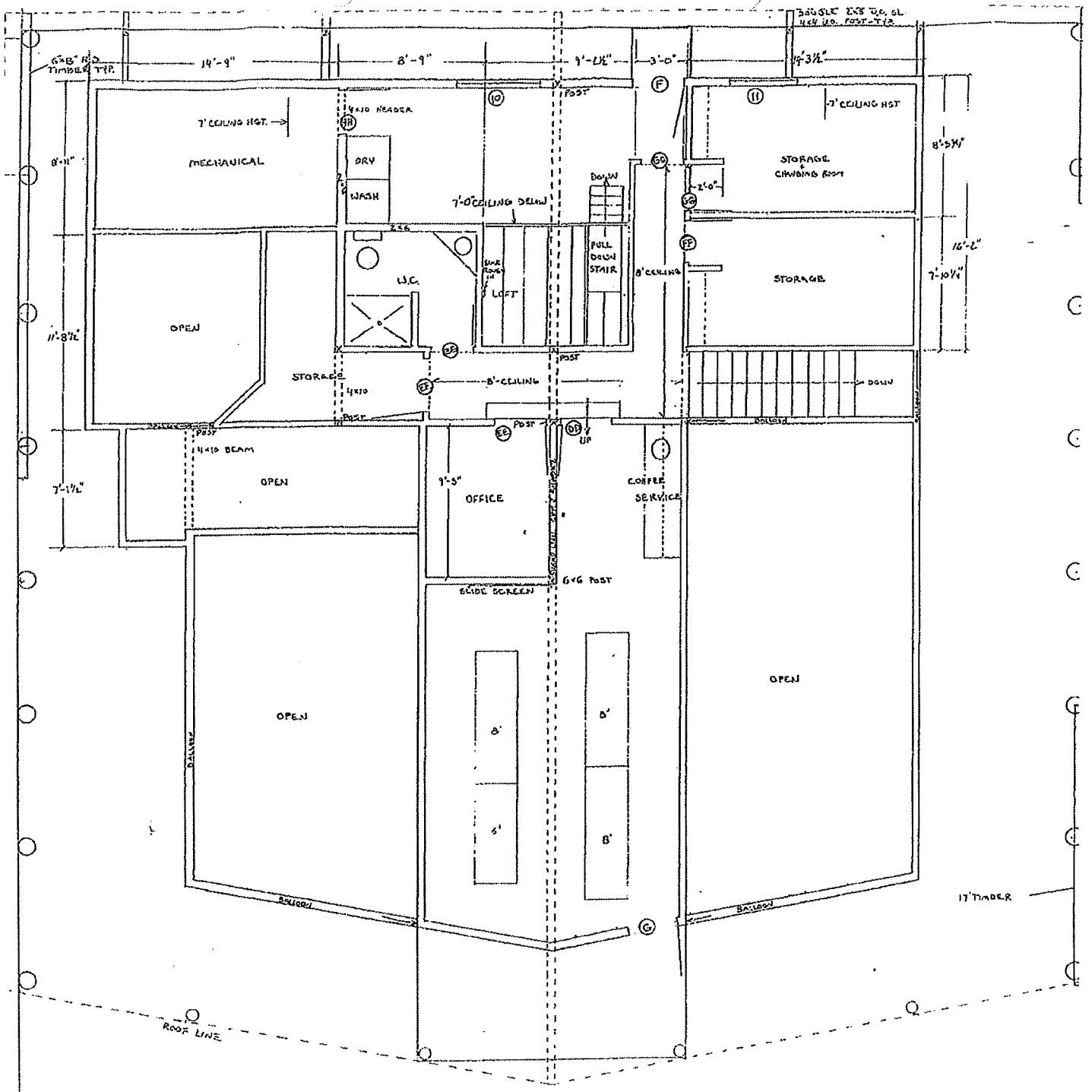


A-2

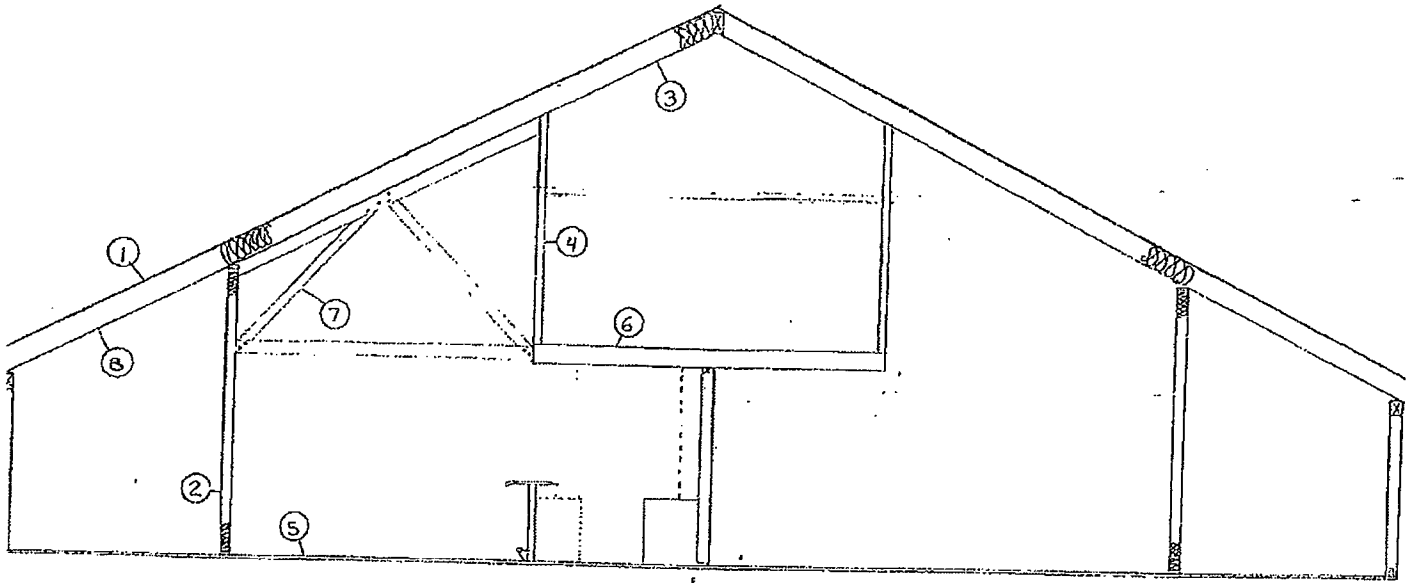
IMPROVEMENT DIAGRAM

ERICKSON & ASSOCIATES
 REAL ESTATE APPRAISERS & CONSULTANTS

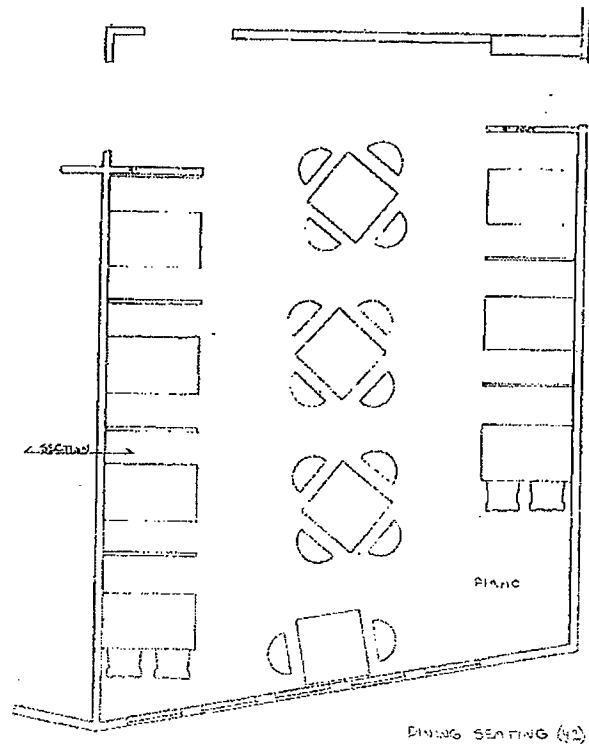


IMPROVEMENT DIAGRAM

ERICKSON & ASSOCIATES
 REAL ESTATE APPRAISERS & CONSULTANTS



- 1. TYP. ROOF - 16" STANDING SEAM METAL ROOFING OVER 15 LB FELT & 7/16 O.S.B. FASTEN PER MANUFACTURER
- 2. TYP. WALL - CEDAR SHINGLES OVER TVEX, 7/16 O.S.B. AND 2x6" STUDS AT 24" O.C. WITH R-19 BATT INSULATION & POLY VAPOR BARRIER
- 3. TYP. ROOF FRAMING - 14" B.C.I. 600 PER MANUFACTURERS SPECS WITH 1/2" DRYWALL OVER POLY VAPOR BARRIER AND R-30 BATT INSULATION
- 4. TYP. INTERIOR WALL - 1/2" DRYWALL OVER 2x4" OR 2x6" STUDS @ 16" O.C. PUBLIC SPACES FINISHED WITH 36" HIGH PINE WAINSCOT
- DOWNSTAIRS FLOOR - 1 1/8" T&G PLYWOOD OVER FRAMING PER STRUCTURAL WITH CERAMIC TILE OVER 1/4" DURA-ROCK
- UPSTAIRS FLOOR - OAK PARQUET FLOORING OVER 3/4" T&G PLYWOOD AND 1 1/2" B.C.I. 450 @ 16" O.C. 12" VINYL TILE IN BATH, MECHANICAL & STORAGE
- DECORATIVE TRUSS 1/4" R.S. 2x4 MATERIAL @ 6' O.C.
- 3/8" R.S. PLYWOOD SOFFIT
- KITCHEN AND BATH INTERIORS FINISH WITH "BRITISH" TYPE WASHABLE WALL COVERING OVER 1/2" DRYWALL GREEN BOARD IN WET AREAS, WITH 4" RUBBER BASE CEILING OF 1/2 DRYWALL W/ WASHABLE PAINT SURFACE



IMPROVEMENT DIAGRAM

ERICKSON & ASSOCIATES
 REAL ESTATE APPRAISERS & CONSULTANTS