

ELK MOUNTAIN RANCH RECORD OF SURVEY



TO REPLACE LOT SPLIT PLATS INST. # 270085 & #279545 AND RECORD OF SURVEY INST. # 271220 & #279544
 LOCATED IN SECTIONS 19,20,29,30 T. 24 N., R. 22 E.,
 BOISE MERIDIAN, LEMHI COUNTY, IDAHO
 SEE R.O.S. INST. # 237760, 238336, 253783, 234987, & 253731
 OWNER: FOURTH OF JULY CREEK, L.L.C.

U.S.F.S.

U.S.F.S.

PRIVATE LAND

LEGEND

-  HOME SITE - WITHIN 150' RADIUS (1.62 ACRES)
-  SEPTIC SYSTEM - APPROVED LOCATION

U.S.F.S.

NOTE: THE PURPOSE OF THIS SURVEY IS TO SHOW ALL OF THE UPDATES THAT HAVE BEEN MADE TO THESE PARCELS IN ONE COMPREHENSIVE SURVEY.

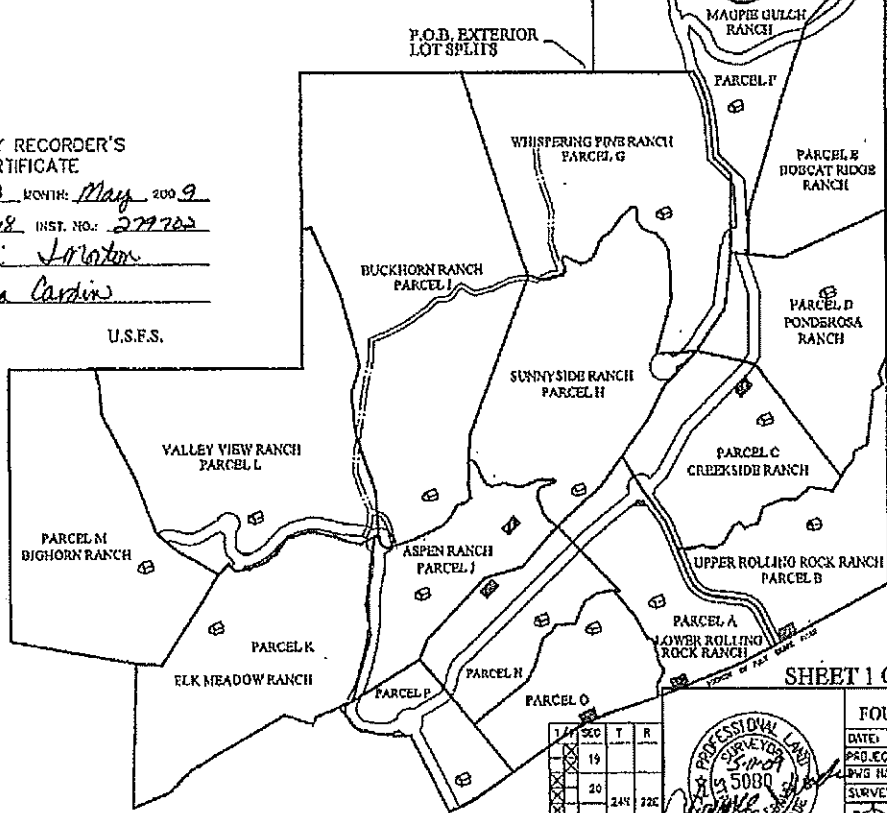
U.S.F.S.

P.O.B. EXTERIOR LOT SPLITS

**COUNTY RECORDER'S
CERTIFICATE**

TIME: 9:02 DAY: 13 MONTH: May 2009
 BOOK: 17 PAGE: 108 INST. NO.: 279702
 RECORDER: Terri Linton
 BY: Cyrena Cardin

U.S.F.S.



SHEET 1 OF 8

FOR
FOURTH OF JULY CREEK, L.L.C.

DATE: 2/2/09 DRAWN/CHK BY: CRYSMAJW
 PROJECT: FROD100117TH JULY CREEK, L.L.C.
 DWG NAME: WEDDED RGE-TH JULY CREEK, L.L.C. DWG
 SURVEY: ALL POINT ZAK

WADE SURVEYING
 GLOBAL POSITIONING SERVICE
 LAND SURVEYING PLANNING
 421 WAREHOLE RD. SAULT STEAD, IDAHO
 (208) 275-1251

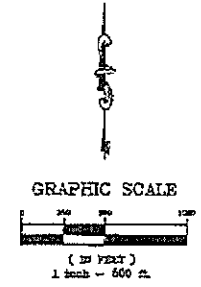


SEC	T	R
19		
20	24E	22E
21		
22		
23		
24		
25		

Handwritten note: to survey by Terri Linton

ELK MOUNTAIN RANCH RECORD OF SURVEY

TO REPLACE LOT SPLIT PLATS INST. # 270085 & # 279545
AND RECORD OF SURVEY INST. # 271220 & # 279544
LOCATED IN SECTIONS 19, 20, 29, 30 T. 24 N., R. 22 E.,
BOISE MERIDIAN, LEMHI COUNTY, IDAHO
SEE R.O.S. INST. # 237760, 236336, 253783, 234987, & 253731
OWNER: FOURTH OF JULY CREEK, L.L.C.



LEGEND

- P.O.B.
- POINT OF BEGINNING
- SECTION LINE
- BOUNDARY LINE
- QUARTER SECTION LINE
- SIXTEENTH SECTION LINE
- SHEET OUTLINE
- HOUSE SITED WITHIN 150' RADIUS (1.42 ACRES)

SHEET INDEX	
SHEET 1	OWNER
SHEET 2	SECTION 19, 20, 29, 30 T. 24 N., R. 22 E., BOISE MERIDIAN, LEMHI COUNTY, IDAHO
SHEET 3	SECTION 19, 20, 29, 30 T. 24 N., R. 22 E., BOISE MERIDIAN, LEMHI COUNTY, IDAHO
SHEET 4	SECTION 19, 20, 29, 30 T. 24 N., R. 22 E., BOISE MERIDIAN, LEMHI COUNTY, IDAHO
SHEET 5	SECTION 19, 20, 29, 30 T. 24 N., R. 22 E., BOISE MERIDIAN, LEMHI COUNTY, IDAHO
SHEET 6	SECTION 19, 20, 29, 30 T. 24 N., R. 22 E., BOISE MERIDIAN, LEMHI COUNTY, IDAHO
SHEET 7	SECTION 19, 20, 29, 30 T. 24 N., R. 22 E., BOISE MERIDIAN, LEMHI COUNTY, IDAHO
SHEET 8	SECTION 19, 20, 29, 30 T. 24 N., R. 22 E., BOISE MERIDIAN, LEMHI COUNTY, IDAHO
SHEET 9	SECTION 19, 20, 29, 30 T. 24 N., R. 22 E., BOISE MERIDIAN, LEMHI COUNTY, IDAHO
SHEET 10	SECTION 19, 20, 29, 30 T. 24 N., R. 22 E., BOISE MERIDIAN, LEMHI COUNTY, IDAHO

Lemhi County
Jensyn Moten

COUNTY RECORDER'S CERTIFICATE

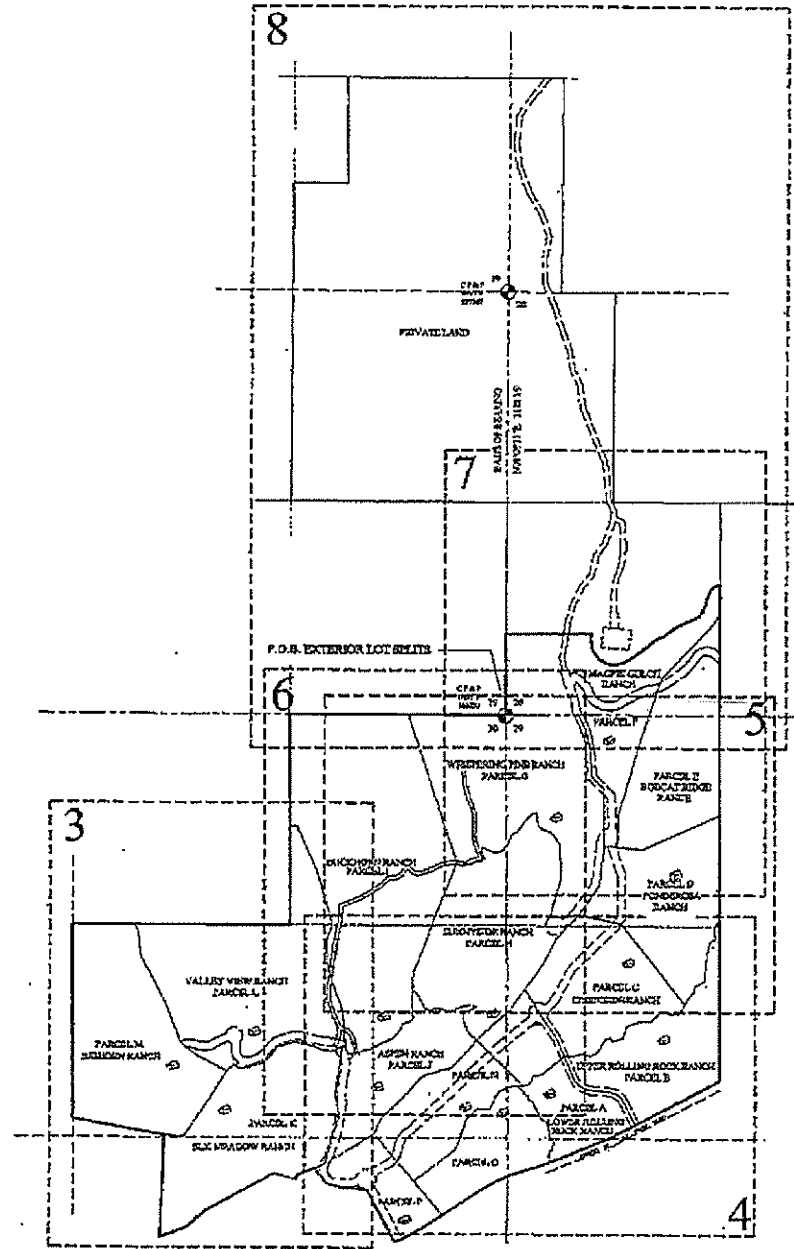
TWO 9th DAY 13 MONTH May 2009
BOOK 17 PAGE 148 INST. NO. 279762
RECORDER: Jenni Johnston
BY: Eugene Carlin

SHEET 2 OF 8

1/4	SEC	T	R
X	18		
X	20		
X	29	24N	22E
X	30		



FOR
FOURTH OF JULY CREEK, L.L.C.
DATE: 3/6/09 DRAWN BY: GWEN/ALW
PROJECT: PROJECT 10001704 REVEGETATION
FILE NAME: 404-104-10001704-11-01.DWG
SURVEY: ALL POINTS
WADE SURVEYING
GLOBAL POSITIONING SYSTEMS
LAND SURVEYING & PLANNING
404 N. BROAD ST., BALSAN, IDAHO
2000



ELK MOUNTAIN RANCH RECORD OF SURVEY

TO REPLACELOT SPLIT PLATS INST. # 270085 & #279545
AND RECORD OF SURVEY INST. # 271220 & #279544
LOCATED IN SECTIONS 19, 20, 29, 30 T. 24 N., R. 22 E.,
BOISE MERIDIAN, LEMHI COUNTY, IDAHO
SEE R.O.S. INST. # 237760, 238356, 253783, 234087, & 253731
OWNER: FOURTH OF JULY CREEK, L.L.C.

NOTE:
SPLITTING COORDINATES AT THE INTERSECTION OF
NEIGHBORING PLATS SHALL BE THE SAME AS THE RECORD OF
SURVEY INSTRUMENT TO WHICH THEY RELATE.

LINE	LENGTH	BEARING	LEASTS
1	1.00	S 89° 57' 12" W	0.17
2	1.00	S 89° 57' 12" W	0.17
3	1.00	S 89° 57' 12" W	0.17
4	1.00	S 89° 57' 12" W	0.17
5	1.00	S 89° 57' 12" W	0.17
6	1.00	S 89° 57' 12" W	0.17
7	1.00	S 89° 57' 12" W	0.17
8	1.00	S 89° 57' 12" W	0.17
9	1.00	S 89° 57' 12" W	0.17
10	1.00	S 89° 57' 12" W	0.17
11	1.00	S 89° 57' 12" W	0.17
12	1.00	S 89° 57' 12" W	0.17
13	1.00	S 89° 57' 12" W	0.17
14	1.00	S 89° 57' 12" W	0.17
15	1.00	S 89° 57' 12" W	0.17
16	1.00	S 89° 57' 12" W	0.17
17	1.00	S 89° 57' 12" W	0.17
18	1.00	S 89° 57' 12" W	0.17
19	1.00	S 89° 57' 12" W	0.17
20	1.00	S 89° 57' 12" W	0.17
21	1.00	S 89° 57' 12" W	0.17
22	1.00	S 89° 57' 12" W	0.17
23	1.00	S 89° 57' 12" W	0.17
24	1.00	S 89° 57' 12" W	0.17
25	1.00	S 89° 57' 12" W	0.17
26	1.00	S 89° 57' 12" W	0.17
27	1.00	S 89° 57' 12" W	0.17
28	1.00	S 89° 57' 12" W	0.17
29	1.00	S 89° 57' 12" W	0.17
30	1.00	S 89° 57' 12" W	0.17
31	1.00	S 89° 57' 12" W	0.17
32	1.00	S 89° 57' 12" W	0.17
33	1.00	S 89° 57' 12" W	0.17
34	1.00	S 89° 57' 12" W	0.17
35	1.00	S 89° 57' 12" W	0.17
36	1.00	S 89° 57' 12" W	0.17
37	1.00	S 89° 57' 12" W	0.17
38	1.00	S 89° 57' 12" W	0.17
39	1.00	S 89° 57' 12" W	0.17
40	1.00	S 89° 57' 12" W	0.17
41	1.00	S 89° 57' 12" W	0.17
42	1.00	S 89° 57' 12" W	0.17
43	1.00	S 89° 57' 12" W	0.17
44	1.00	S 89° 57' 12" W	0.17
45	1.00	S 89° 57' 12" W	0.17
46	1.00	S 89° 57' 12" W	0.17
47	1.00	S 89° 57' 12" W	0.17
48	1.00	S 89° 57' 12" W	0.17
49	1.00	S 89° 57' 12" W	0.17
50	1.00	S 89° 57' 12" W	0.17
51	1.00	S 89° 57' 12" W	0.17
52	1.00	S 89° 57' 12" W	0.17
53	1.00	S 89° 57' 12" W	0.17
54	1.00	S 89° 57' 12" W	0.17
55	1.00	S 89° 57' 12" W	0.17
56	1.00	S 89° 57' 12" W	0.17
57	1.00	S 89° 57' 12" W	0.17
58	1.00	S 89° 57' 12" W	0.17
59	1.00	S 89° 57' 12" W	0.17
60	1.00	S 89° 57' 12" W	0.17
61	1.00	S 89° 57' 12" W	0.17
62	1.00	S 89° 57' 12" W	0.17
63	1.00	S 89° 57' 12" W	0.17
64	1.00	S 89° 57' 12" W	0.17
65	1.00	S 89° 57' 12" W	0.17
66	1.00	S 89° 57' 12" W	0.17
67	1.00	S 89° 57' 12" W	0.17
68	1.00	S 89° 57' 12" W	0.17
69	1.00	S 89° 57' 12" W	0.17
70	1.00	S 89° 57' 12" W	0.17
71	1.00	S 89° 57' 12" W	0.17
72	1.00	S 89° 57' 12" W	0.17
73	1.00	S 89° 57' 12" W	0.17
74	1.00	S 89° 57' 12" W	0.17
75	1.00	S 89° 57' 12" W	0.17
76	1.00	S 89° 57' 12" W	0.17
77	1.00	S 89° 57' 12" W	0.17
78	1.00	S 89° 57' 12" W	0.17
79	1.00	S 89° 57' 12" W	0.17
80	1.00	S 89° 57' 12" W	0.17
81	1.00	S 89° 57' 12" W	0.17
82	1.00	S 89° 57' 12" W	0.17
83	1.00	S 89° 57' 12" W	0.17
84	1.00	S 89° 57' 12" W	0.17
85	1.00	S 89° 57' 12" W	0.17
86	1.00	S 89° 57' 12" W	0.17
87	1.00	S 89° 57' 12" W	0.17
88	1.00	S 89° 57' 12" W	0.17
89	1.00	S 89° 57' 12" W	0.17
90	1.00	S 89° 57' 12" W	0.17
91	1.00	S 89° 57' 12" W	0.17
92	1.00	S 89° 57' 12" W	0.17
93	1.00	S 89° 57' 12" W	0.17
94	1.00	S 89° 57' 12" W	0.17
95	1.00	S 89° 57' 12" W	0.17
96	1.00	S 89° 57' 12" W	0.17
97	1.00	S 89° 57' 12" W	0.17
98	1.00	S 89° 57' 12" W	0.17
99	1.00	S 89° 57' 12" W	0.17
100	1.00	S 89° 57' 12" W	0.17

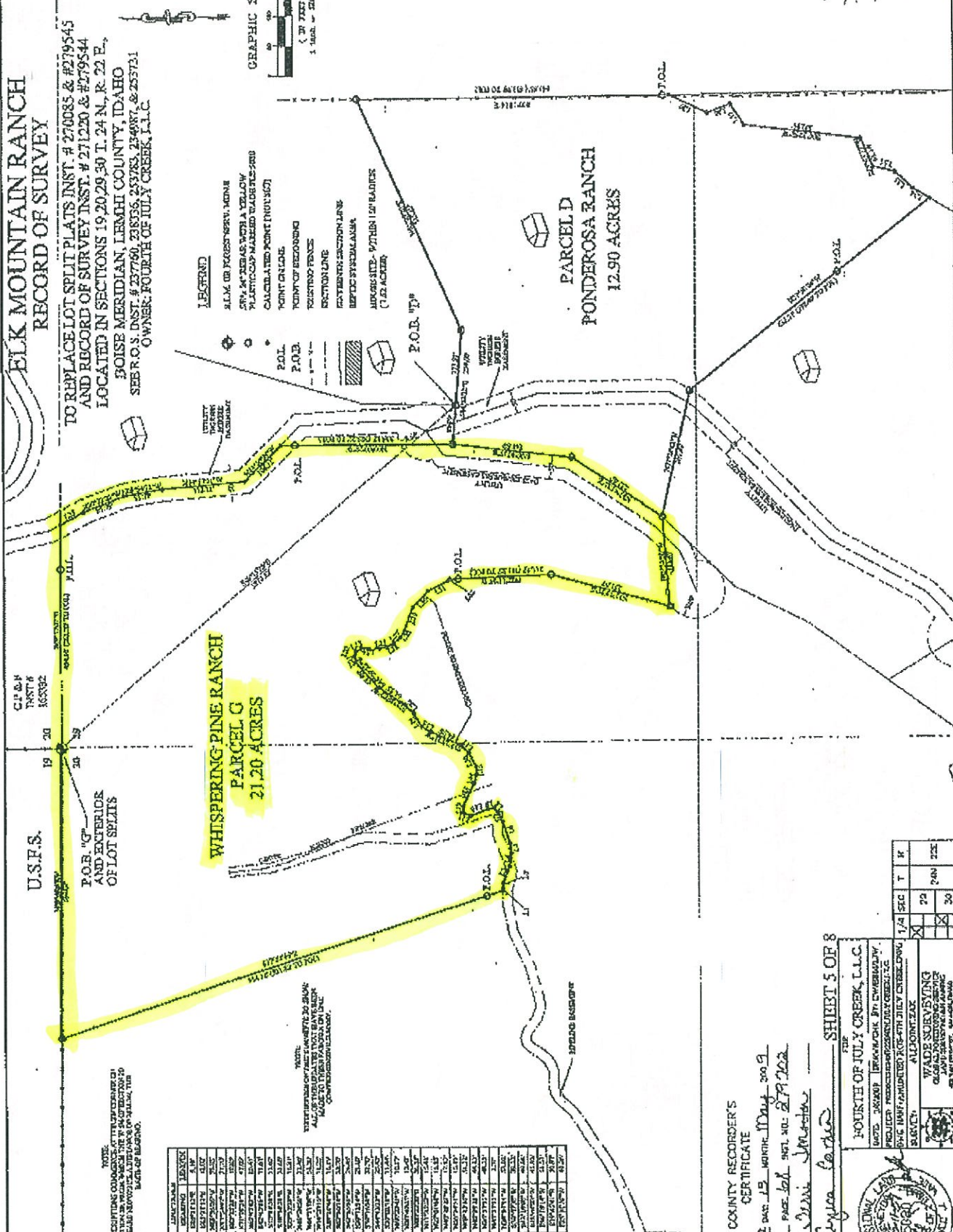
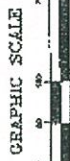
NOTE:
THE SURFACE OF THE LAND SHALL BE SHOWN
AS TO THE SURFACE OF THE LAND AS TO THE
CONTOUR SURFACE.

**WHISPERING PINE RANCH
PARCEL G
21.20 ACRES**

**PARCEL D
PONDEROSA RANCH
12.90 ACRES**

LEGEND

- P.O.B.
- P.O.A.
- P.O.C.
- P.O.D.
- P.O.E.
- P.O.F.
- P.O.G.
- P.O.H.
- P.O.I.
- P.O.J.
- P.O.K.
- P.O.L.
- P.O.M.
- P.O.N.
- P.O.O.
- P.O.P.
- P.O.Q.
- P.O.R.
- P.O.S.
- P.O.T.
- P.O.U.
- P.O.V.
- P.O.W.
- P.O.X.
- P.O.Y.
- P.O.Z.
- P.O.1
- P.O.2
- P.O.3
- P.O.4
- P.O.5
- P.O.6
- P.O.7
- P.O.8
- P.O.9
- P.O.0



COUNTY RECORDER'S
CERTIFICATE

THIS IS A TRUE AND CORRECT COPY OF THE ORIGINAL RECORD OF SURVEY INSTRUMENT FILED IN THE PUBLIC RECORDS OF THE COUNTY OF BOISE, IDAHO, ON THIS 13th DAY OF MARCH, 2009.

FOURTH OF JULY CREEK, L.L.C.

WADE SURVEYING
1000 S. 1000 E. SUITE 100
BOISE, IDAHO 83706
PHONE: 208-333-1111
FAX: 208-333-1112
WWW.WADESURVEYING.COM



1/4	SEC	T	R
	29	24	22E
	30		

SHEET 5 OF 8

Wade Surveying