

ELK MOUNTAIN RANCH RECORD OF SURVEY



TO REPLACE LOT SPLIT PLATS INST. # 270085 & #279545 AND RECORD OF SURVEY INST. # 271220 & #279544
 LOCATED IN SECTIONS 19,20,29,30 T. 24 N., R. 22 E.,
 BOISE MERIDIAN, LEMHI COUNTY, IDAHO
 SEE R.O.S. INST. # 237760, 238336, 253783, 234987, & 253731
 OWNER: FOURTH OF JULY CREEK, L.L.C.

U.S.F.S.

U.S.F.S.

PRIVATE LAND

LEGEND

-  HOME SITE - WITHIN 150' RADIUS (1.62 ACRES)
-  SEPTIC SYSTEM - APPROVED LOCATION

U.S.F.S.

NOTE: THE PURPOSE OF THIS SURVEY IS TO SHOW ALL OF THE UPDATES THAT HAVE BEEN MADE TO THESE PARCELS IN ONE COMPREHENSIVE SURVEY.

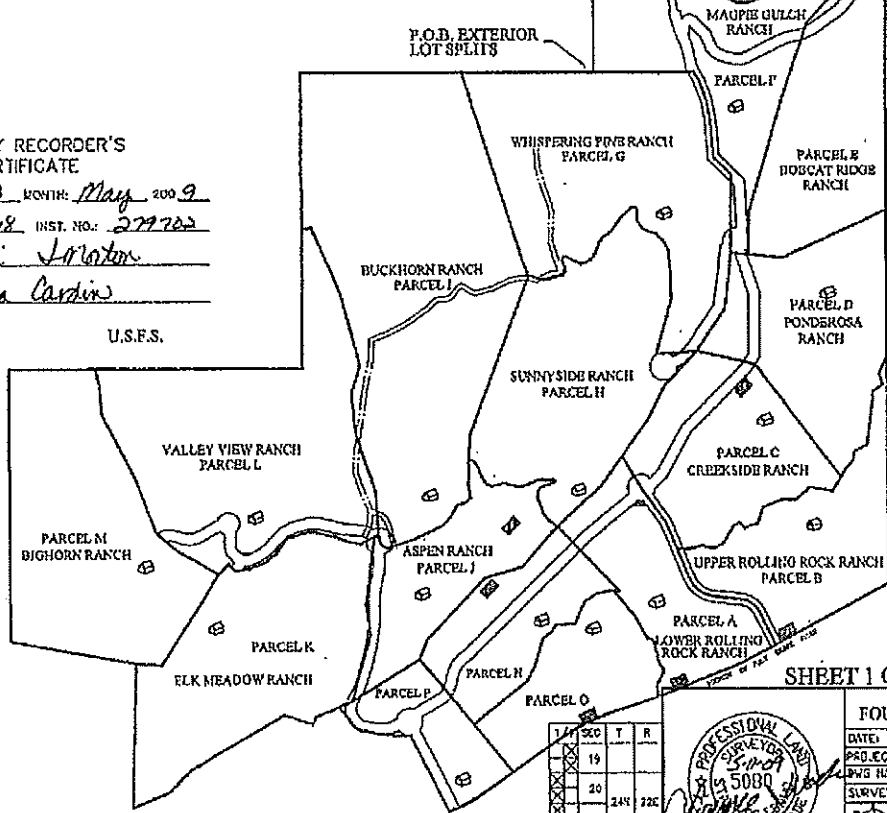
U.S.F.S.

P.O.B. EXTERIOR LOT SPLITS

**COUNTY RECORDER'S
CERTIFICATE**

TIME: 9:02 DAY: 13 MONTH: May 2009
 BOOK: 17 PAGE: 108 INST. NO.: 279702
 RECORDER: Terri Linton
 BY: Cyrena Cardin

U.S.F.S.



SHEET 1 OF 8

FOR
FOURTH OF JULY CREEK, L.L.C.

DATE: 2/2/09 DRAWN/CHECK BY: CR/ER/MAJ/W
 PROJECT: FROD/10/01/11/14/17/18/21/22/23/24/25/26/27/28/29/30/31/32/33/34/35/36/37/38/39/40/41/42/43/44/45/46/47/48/49/50/51/52/53/54/55/56/57/58/59/60/61/62/63/64/65/66/67/68/69/70/71/72/73/74/75/76/77/78/79/80/81/82/83/84/85/86/87/88/89/90/91/92/93/94/95/96/97/98/99/100
 SURVEY: ALL POINTS

WADE SURVEYING
 GLOBAL POSITIONING SERVICE
 LAND SURVEYING PLANNING
 421 WAREHOLE RD. (S. 1000' E. 1000' N.)
 (208) 275-1100 (24)

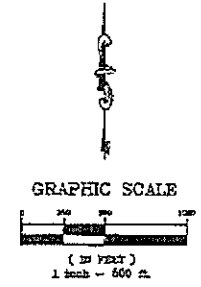


SEC	T	R
19		
20	24E	22E
21		
22		
23		
24		
25		

Handwritten note: to survey by Terri Linton

ELK MOUNTAIN RANCH RECORD OF SURVEY

TO REPLACE LOT SPLIT PLATS INST. # 270085 & # 279545
AND RECORD OF SURVEY INST. # 271220 & # 279544
LOCATED IN SECTIONS 19, 20, 29, 30 T. 24 N., R. 22 E.,
BOISE MERIDIAN, LEMHI COUNTY, IDAHO
SEE R.O.S. INST. # 237760, 236336, 253783, 234987, & 253731
OWNER: FOURTH OF JULY CREEK, L.L.C.



LEGEND

- P.O.B.
- POINT OF BEGINNING
- SECTION LINE
- BOUNDARY LINE
- QUARTER SECTION LINE
- SIXTEENTH SECTION LINE
- SHEET OUTLINE
- HOUSE SITED WITHIN 150' RADIUS (1/4 ACRES)

SHEET INDEX	
SHEET 1	COURSE
SHEET 2	PARCELS A-D, WINDY CREEK
SHEET 3	VALLEY VIEW RANCH, VALLEY VIEW RANCH (PARCELS L, LK)
SHEET 4	VALLEY VIEW RANCH, VALLEY VIEW RANCH (PARCELS M, N, O, P)
SHEET 5	VALLEY VIEW RANCH, VALLEY VIEW RANCH (PARCELS Q, R, S, T)
SHEET 6	VALLEY VIEW RANCH, VALLEY VIEW RANCH (PARCELS U, V, W, X, Y, Z)
SHEET 7	VALLEY VIEW RANCH, VALLEY VIEW RANCH (PARCELS AA, AB, AC, AD, AE, AF, AG, AH, AI, AJ, AK, AL, AM, AN, AO, AP, AQ, AR, AS, AT, AU, AV, AW, AX, AY, AZ)
SHEET 8	VALLEY VIEW RANCH, VALLEY VIEW RANCH (PARCELS BA, BB, BC, BD, BE, BF, BG, BH, BI, BJ, BK, BL, BM, BN, BO, BP, BQ, BR, BS, BT, BU, BV, BW, BX, BY, BZ)
SHEET 9	VALLEY VIEW RANCH, VALLEY VIEW RANCH (PARCELS CA, CB, CC, CD, CE, CF, CG, CH, CI, CJ, CK, CL, CM, CN, CO, CP, CQ, CR, CS, CT, CU, CV, CW, CX, CY, CZ)
SHEET 10	VALLEY VIEW RANCH, VALLEY VIEW RANCH (PARCELS DA, DB, DC, DD, DE, DF, DG, DH, DI, DJ, DK, DL, DM, DN, DO, DP, DQ, DR, DS, DT, DU, DV, DW, DX, DY, DZ)
SHEET 11	VALLEY VIEW RANCH, VALLEY VIEW RANCH (PARCELS EA, EB, EC, ED, EE, EF, EG, EH, EI, EJ, EK, EL, EM, EN, EO, EP, EQ, ER, ES, ET, EU, EV, EW, EX, EY, EZ)
SHEET 12	VALLEY VIEW RANCH, VALLEY VIEW RANCH (PARCELS FA, FB, FC, FD, FE, FF, FG, FH, FI, FJ, FK, FL, FM, FN, FO, FP, FQ, FR, FS, FT, FU, FV, FW, FX, FY, FZ)
SHEET 13	VALLEY VIEW RANCH, VALLEY VIEW RANCH (PARCELS GA, GB, GC, GD, GE, GF, GG, GH, GI, GJ, GK, GL, GM, GN, GO, GP, GQ, GR, GS, GT, GU, GV, GW, GX, GY, GZ)
SHEET 14	VALLEY VIEW RANCH, VALLEY VIEW RANCH (PARCELS HA, HB, HC, HD, HE, HF, HG, HH, HI, HJ, HK, HL, HM, HN, HO, HP, HQ, HR, HS, HT, HU, HV, HW, HX, HY, HZ)
SHEET 15	VALLEY VIEW RANCH, VALLEY VIEW RANCH (PARCELS IA, IB, IC, ID, IE, IF, IG, IH, II, IJ, IK, IL, IM, IN, IO, IP, IQ, IR, IS, IT, IU, IV, IW, IX, IY, IZ)
SHEET 16	VALLEY VIEW RANCH, VALLEY VIEW RANCH (PARCELS JA, JB, JC, JD, JE, JF, JG, JH, JI, JJ, JK, JL, JM, JN, JO, JP, JQ, JR, JS, JT, JU, JV, JW, JX, JY, JZ)
SHEET 17	VALLEY VIEW RANCH, VALLEY VIEW RANCH (PARCELS KA, KB, KC, KD, KE, KF, KG, KH, KI, KJ, KK, KL, KM, KN, KO, KP, KQ, KR, KS, KT, KU, KV, KW, KX, KY, KZ)
SHEET 18	VALLEY VIEW RANCH, VALLEY VIEW RANCH (PARCELS LA, LB, LC, LD, LE, LF, LG, LH, LI, LJ, LK, LL, LM, LN, LO, LP, LQ, LR, LS, LT, LU, LV, LW, LX, LY, LZ)
SHEET 19	VALLEY VIEW RANCH, VALLEY VIEW RANCH (PARCELS MA, MB, MC, MD, ME, MF, MG, MH, MI, MJ, MK, ML, MM, MN, MO, MP, MQ, MR, MS, MT, MU, MV, MW, MX, MY, MZ)
SHEET 20	VALLEY VIEW RANCH, VALLEY VIEW RANCH (PARCELS NA, NB, NC, ND, NE, NF, NG, NH, NI, NJ, NK, NL, NM, NN, NO, NP, NQ, NR, NS, NT, NU, NV, NW, NX, NY, NZ)
SHEET 21	VALLEY VIEW RANCH, VALLEY VIEW RANCH (PARCELS OA, OB, OC, OD, OE, OF, OG, OH, OI, OJ, OK, OL, OM, ON, OO, OP, OQ, OR, OS, OT, OU, OV, OW, OX, OY, OZ)
SHEET 22	VALLEY VIEW RANCH, VALLEY VIEW RANCH (PARCELS PA, PB, PC, PD, PE, PF, PG, PH, PI, PJ, PK, PL, PM, PN, PO, PP, PQ, PR, PS, PT, PU, PV, PW, PX, PY, PZ)
SHEET 23	VALLEY VIEW RANCH, VALLEY VIEW RANCH (PARCELS QA, QB, QC, QD, QE, QF, QG, QH, QI, QJ, QK, QL, QM, QN, QO, QP, QQ, QR, QS, QT, QU, QV, QW, QX, QY, QZ)
SHEET 24	VALLEY VIEW RANCH, VALLEY VIEW RANCH (PARCELS RA, RB, RC, RD, RE, RF, RG, RH, RI, RJ, RK, RL, RM, RN, RO, RP, RQ, RR, RS, RT, RU, RV, RW, RX, RY, RZ)
SHEET 25	VALLEY VIEW RANCH, VALLEY VIEW RANCH (PARCELS SA, SB, SC, SD, SE, SF, SG, SH, SI, SJ, SK, SL, SM, SN, SO, SP, SQ, SR, SS, ST, SU, SV, SW, SX, SY, SZ)
SHEET 26	VALLEY VIEW RANCH, VALLEY VIEW RANCH (PARCELS TA, TB, TC, TD, TE, TF, TG, TH, TI, TJ, TK, TL, TM, TN, TO, TP, TQ, TR, TS, TT, TU, TV, TW, TX, TY, TZ)
SHEET 27	VALLEY VIEW RANCH, VALLEY VIEW RANCH (PARCELS UA, UB, UC, UD, UE, UF, UG, UH, UI, UJ, UK, UL, UM, UN, UO, UP, UQ, UR, US, UT, UY, UV, UW, UX, UY, UZ)
SHEET 28	VALLEY VIEW RANCH, VALLEY VIEW RANCH (PARCELS VA, VB, VC, VD, VE, VF, VG, VH, VI, VJ, VK, VL, VM, VN, VO, VP, VQ, VR, VS, VT, VU, VV, VW, VX, VY, VZ)
SHEET 29	VALLEY VIEW RANCH, VALLEY VIEW RANCH (PARCELS WA, WB, WC, WD, WE, WF, WG, WH, WI, WJ, WK, WL, WM, WN, WO, WP, WQ, WR, WS, WT, WU, WV, WW, WX, WY, WZ)
SHEET 30	VALLEY VIEW RANCH, VALLEY VIEW RANCH (PARCELS XA, XB, XC, XD, XE, XF, XG, XH, XI, XJ, XK, XL, XM, XN, XO, XP, XQ, XR, XS, XT, XU, XV, XW, XX, XY, XZ)
SHEET 31	VALLEY VIEW RANCH, VALLEY VIEW RANCH (PARCELS YA, YB, YC, YD, YE, YF, YG, YH, YI, YJ, YK, YL, YM, YN, YO, YP, YQ, YR, YS, YT, YU, YV, YW, YX, YY, YZ)
SHEET 32	VALLEY VIEW RANCH, VALLEY VIEW RANCH (PARCELS ZA, ZB, ZC, ZD, ZE, ZF, ZG, ZH, ZI, ZJ, ZK, ZL, ZM, ZN, ZO, ZP, ZQ, ZR, ZS, ZT, ZU, ZV, ZW, ZX, ZY, ZZ)

Lemhi County
Jennifer Moton

COUNTY RECORDER'S CERTIFICATE

TWO 9th DAY 13 MONTH May 2009
BOOK 17 PAGE 168 INST. NO. 279762
RECORDER: Jenni Moton
BY: Eugene Carlin

SHEET 2 OF 8

1/4	SEC	T	R
X	18		
X	20		
X	29	24N	22E
X	30		



FOR
FOURTH OF JULY CREEK, L.L.C.
DATE: 3/6/09 DRAWN BY: GWEN/ALW
PROJECT: PROJECT 2008-01 REVEGETATION
FILE NAME: 4/28/09-104-THE FOURTH OF JULY CREEK, L.L.C. DWG
SURVEY: ALL POINTS
WADE SURVEYING
GLOBAL POSITIONING SYSTEMS
LAND SURVEYING & ENGINEERING
400 W. BROAD ST., BALTIMORE, MARYLAND
21201

FLK MOUNTAIN RANCH RECORD OF SURVEY

BLK. OR POST SET; MOBS
 SET; 2" REBAR WITH A YELLOW
 PLASTIC CAP MARKED W/ R.S. # 3680
 CALCULATED POINT (OUTER)
 POINT OF BEGINNING
 POINT ON LINE
 EXISTING FENCE
 SECTION LINE

SEPTIC SYSTEM, ALVA,
 FOUND 5'-3" - 11" DEPT. 130' RADUS
 (1.34 ACRES)

TO REPLACE LOT SPLIT PLATS INST. # 270085 & #279545
 AND RECORD OF SURVEY INST. # 271120 & #279544
 AND RECORD OF SURVEY INST. # 271120 & #279544
 LOCATED IN SECTIONS 19, 20, 29, 30, T. 24 N., R. 22 E.,
 BOISE MERIDIAN, LEMHI COUNTY, IDAHO.
 SEE R.O.S. INST. # 237766, 238334, 237783, 234987 & 237571.
 OWNER: FOUNTAIN OF JULY CREEK, LLC.

LEGEND
 EXISTING FENCE
 SECTION LINE
 SEPTIC SYSTEM, ALVA,
 FOUND 5'-3" - 11" DEPT. 130' RADUS
 (1.34 ACRES)

LINE TABLE

LINE	START POINT	END POINT	LENGTH	BEARING	AREA
L1	STATION 1	STATION 2	12.34	N 10° 15' 00" E	0.12
L2	STATION 2	STATION 3	15.67	S 89° 45' 00" W	0.15
L3	STATION 3	STATION 4	18.92	S 10° 00' 00" W	0.18
L4	STATION 4	STATION 5	22.18	N 89° 15' 00" E	0.22
L5	STATION 5	STATION 6	25.43	N 10° 15' 00" E	0.25
L6	STATION 6	STATION 7	28.69	S 89° 45' 00" W	0.28
L7	STATION 7	STATION 8	31.94	S 10° 00' 00" W	0.31
L8	STATION 8	STATION 9	35.20	N 89° 15' 00" E	0.35
L9	STATION 9	STATION 10	38.45	N 10° 15' 00" E	0.38
L10	STATION 10	STATION 11	41.71	S 89° 45' 00" W	0.41
L11	STATION 11	STATION 12	44.96	S 10° 00' 00" W	0.44
L12	STATION 12	STATION 13	48.22	N 89° 15' 00" E	0.48
L13	STATION 13	STATION 14	51.47	N 10° 15' 00" E	0.51
L14	STATION 14	STATION 15	54.73	S 89° 45' 00" W	0.54
L15	STATION 15	STATION 16	57.98	S 10° 00' 00" W	0.57
L16	STATION 16	STATION 17	61.24	N 89° 15' 00" E	0.61
L17	STATION 17	STATION 18	64.49	N 10° 15' 00" E	0.64
L18	STATION 18	STATION 19	67.75	S 89° 45' 00" W	0.67
L19	STATION 19	STATION 20	71.00	S 10° 00' 00" W	0.71
L20	STATION 20	STATION 21	74.26	N 89° 15' 00" E	0.74
L21	STATION 21	STATION 22	77.51	N 10° 15' 00" E	0.77
L22	STATION 22	STATION 23	80.77	S 89° 45' 00" W	0.80
L23	STATION 23	STATION 24	84.02	S 10° 00' 00" W	0.84
L24	STATION 24	STATION 25	87.28	N 89° 15' 00" E	0.87
L25	STATION 25	STATION 26	90.53	N 10° 15' 00" E	0.90
L26	STATION 26	STATION 27	93.79	S 89° 45' 00" W	0.93
L27	STATION 27	STATION 28	97.04	S 10° 00' 00" W	0.97
L28	STATION 28	STATION 29	100.30	N 89° 15' 00" E	1.00
L29	STATION 29	STATION 30	103.55	N 10° 15' 00" E	1.03
L30	STATION 30	STATION 31	106.81	S 89° 45' 00" W	1.06
L31	STATION 31	STATION 32	110.06	S 10° 00' 00" W	1.10
L32	STATION 32	STATION 33	113.32	N 89° 15' 00" E	1.13
L33	STATION 33	STATION 34	116.57	N 10° 15' 00" E	1.16
L34	STATION 34	STATION 35	119.83	S 89° 45' 00" W	1.19
L35	STATION 35	STATION 36	123.08	S 10° 00' 00" W	1.23
L36	STATION 36	STATION 37	126.34	N 89° 15' 00" E	1.26
L37	STATION 37	STATION 38	129.59	N 10° 15' 00" E	1.29
L38	STATION 38	STATION 39	132.85	S 89° 45' 00" W	1.32
L39	STATION 39	STATION 40	136.10	S 10° 00' 00" W	1.36
L40	STATION 40	STATION 41	139.36	N 89° 15' 00" E	1.39
L41	STATION 41	STATION 42	142.61	N 10° 15' 00" E	1.42
L42	STATION 42	STATION 43	145.87	S 89° 45' 00" W	1.45
L43	STATION 43	STATION 44	149.12	S 10° 00' 00" W	1.49
L44	STATION 44	STATION 45	152.38	N 89° 15' 00" E	1.52
L45	STATION 45	STATION 46	155.63	N 10° 15' 00" E	1.55
L46	STATION 46	STATION 47	158.89	S 89° 45' 00" W	1.58
L47	STATION 47	STATION 48	162.14	S 10° 00' 00" W	1.62
L48	STATION 48	STATION 49	165.40	N 89° 15' 00" E	1.65
L49	STATION 49	STATION 50	168.65	N 10° 15' 00" E	1.68
L50	STATION 50	STATION 51	171.91	S 89° 45' 00" W	1.71
L51	STATION 51	STATION 52	175.16	S 10° 00' 00" W	1.75
L52	STATION 52	STATION 53	178.42	N 89° 15' 00" E	1.78
L53	STATION 53	STATION 54	181.67	N 10° 15' 00" E	1.81
L54	STATION 54	STATION 55	184.93	S 89° 45' 00" W	1.84
L55	STATION 55	STATION 56	188.18	S 10° 00' 00" W	1.88
L56	STATION 56	STATION 57	191.44	N 89° 15' 00" E	1.91
L57	STATION 57	STATION 58	194.69	N 10° 15' 00" E	1.94
L58	STATION 58	STATION 59	197.95	S 89° 45' 00" W	1.97
L59	STATION 59	STATION 60	201.20	S 10° 00' 00" W	2.01
L60	STATION 60	STATION 61	204.46	N 89° 15' 00" E	2.04
L61	STATION 61	STATION 62	207.71	N 10° 15' 00" E	2.07
L62	STATION 62	STATION 63	210.97	S 89° 45' 00" W	2.10
L63	STATION 63	STATION 64	214.22	S 10° 00' 00" W	2.14
L64	STATION 64	STATION 65	217.48	N 89° 15' 00" E	2.17
L65	STATION 65	STATION 66	220.73	N 10° 15' 00" E	2.20
L66	STATION 66	STATION 67	224.00	S 89° 45' 00" W	2.24
L67	STATION 67	STATION 68	227.25	S 10° 00' 00" W	2.27
L68	STATION 68	STATION 69	230.51	N 89° 15' 00" E	2.30
L69	STATION 69	STATION 70	233.76	N 10° 15' 00" E	2.33
L70	STATION 70	STATION 71	237.02	S 89° 45' 00" W	2.37
L71	STATION 71	STATION 72	240.27	S 10° 00' 00" W	2.40
L72	STATION 72	STATION 73	243.53	N 89° 15' 00" E	2.43
L73	STATION 73	STATION 74	246.78	N 10° 15' 00" E	2.46
L74	STATION 74	STATION 75	250.04	S 89° 45' 00" W	2.50
L75	STATION 75	STATION 76	253.29	S 10° 00' 00" W	2.53
L76	STATION 76	STATION 77	256.55	N 89° 15' 00" E	2.56
L77	STATION 77	STATION 78	259.80	N 10° 15' 00" E	2.59
L78	STATION 78	STATION 79	263.06	S 89° 45' 00" W	2.63
L79	STATION 79	STATION 80	266.31	S 10° 00' 00" W	2.66
L80	STATION 80	STATION 81	269.57	N 89° 15' 00" E	2.69
L81	STATION 81	STATION 82	272.82	N 10° 15' 00" E	2.72
L82	STATION 82	STATION 83	276.08	S 89° 45' 00" W	2.76
L83	STATION 83	STATION 84	279.33	S 10° 00' 00" W	2.79
L84	STATION 84	STATION 85	282.59	N 89° 15' 00" E	2.82
L85	STATION 85	STATION 86	285.84	N 10° 15' 00" E	2.85
L86	STATION 86	STATION 87	289.10	S 89° 45' 00" W	2.89
L87	STATION 87	STATION 88	292.35	S 10° 00' 00" W	2.92
L88	STATION 88	STATION 89	295.61	N 89° 15' 00" E	2.95
L89	STATION 89	STATION 90	298.86	N 10° 15' 00" E	2.98
L90	STATION 90	STATION 91	302.12	S 89° 45' 00" W	3.02
L91	STATION 91	STATION 92	305.37	S 10° 00' 00" W	3.05
L92	STATION 92	STATION 93	308.63	N 89° 15' 00" E	3.08
L93	STATION 93	STATION 94	311.88	N 10° 15' 00" E	3.11
L94	STATION 94	STATION 95	315.14	S 89° 45' 00" W	3.15
L95	STATION 95	STATION 96	318.39	S 10° 00' 00" W	3.18
L96	STATION 96	STATION 97	321.65	N 89° 15' 00" E	3.21
L97	STATION 97	STATION 98	324.90	N 10° 15' 00" E	3.24
L98	STATION 98	STATION 99	328.16	S 89° 45' 00" W	3.28
L99	STATION 99	STATION 100	331.41	S 10° 00' 00" W	3.31
L100	STATION 100	STATION 101	334.67	N 89° 15' 00" E	3.34
L101	STATION 101	STATION 102	337.92	N 10° 15' 00" E	3.37
L102	STATION 102	STATION 103	341.18	S 89° 45' 00" W	3.41
L103	STATION 103	STATION 104	344.43	S 10° 00' 00" W	3.44
L104	STATION 104	STATION 105	347.69	N 89° 15' 00" E	3.47
L105	STATION 105	STATION 106	350.94	N 10° 15' 00" E	3.50
L106	STATION 106	STATION 107	354.20	S 89° 45' 00" W	3.54
L107	STATION 107	STATION 108	357.45	S 10° 00' 00" W	3.57
L108	STATION 108	STATION 109	360.71	N 89° 15' 00" E	3.60
L109	STATION 109	STATION 110	363.96	N 10° 15' 00" E	3.63
L110	STATION 110	STATION 111	367.22	S 89° 45' 00" W	3.67
L111	STATION 111	STATION 112	370.47	S 10° 00' 00" W	3.70
L112	STATION 112	STATION 113	373.73	N 89° 15' 00" E	3.73
L113	STATION 113	STATION 114	376.98	N 10° 15' 00" E	3.76
L114	STATION 114	STATION 115	380.24	S 89° 45' 00" W	3.80
L115	STATION 115	STATION 116	383.49	S 10° 00' 00" W	3.83
L116	STATION 116	STATION 117	386.75	N 89° 15' 00" E	3.86
L117	STATION 117	STATION 118	390.00	N 10° 15' 00" E	3.90
L118	STATION 118	STATION 119	393.26	S 89° 45' 00" W	3.93
L119	STATION 119	STATION 120	396.51	S 10° 00' 00" W	3.96
L120	STATION 120	STATION 121	399.77	N 89° 15' 00" E	3.99
L121	STATION 121	STATION 122	403.02	N 10° 15' 00" E	4.03
L122	STATION 122	STATION 123	406.28	S 89° 45' 00" W	4.06
L123	STATION 123	STATION 124	409.53	S 10° 00' 00" W	4.09
L124	STATION 124	STATION 125	412.79	N 89° 15' 00" E	4.12
L125	STATION 125	STATION 126	416.04	N 10° 15' 00" E	4.16
L126	STATION 126	STATION 127	419.30	S 89° 45' 00" W	4.19
L127	STATION 127	STATION 128	422.55	S 10° 00' 00" W	4.22
L128	STATION 128	STATION 129	425.81	N 89° 15' 00" E	4.25
L129	STATION 129	STATION 130	429.06	N 10° 15' 00" E	4.29
L130	STATION 130	STATION 131	432.32	S 89° 45' 00" W	4.32
L131	STATION 131	STATION 132	435.57	S 10° 00' 00" W	4.35
L132	STATION 132	STATION 133	438.83	N 89° 15' 00" E	4.38
L133	STATION 133	STATION 134	442.08	N 10° 15' 00" E	4.42
L134	STATION 134	STATION 135	445.34	S 89° 45' 00" W	4.45
L135	STATION 135	STATION 136	448.59	S 10° 00' 00" W	4.48
L136	STATION 136	STATION 137	451.85	N 89° 15' 00" E	4.51
L137	STATION 137	STATION 138	455.10	N 10° 15' 00" E	4.55
L138	STATION 138	STATION 139	458.36	S 89° 45' 00" W	4.58
L139	STATION 139	STATION 140	461.61	S 10° 00' 00" W	4.61
L140	STATION 140	STATION 141	464.87	N 89° 15' 00" E	4.64
L141	STATION 141	STATION 142	468.12	N 10° 15' 00" E	4.68
L142	STATION 142	STATION 143	471.38	S 89° 45' 00" W	4.71
L143	STATION 143	STATION 144	474.63	S 10° 00' 00" W	4.74
L144	STATION 144	STATION 145	477.89	N 89° 15' 00" E	4.77
L145	STATION 145	STATION 146	481.14	N 10° 15' 00" E	4.81
L146	STATION 146	STATION 147	484.40	S 89° 45' 00" W	4.84
L147	STATION 147	STATION 148	487.65	S 10° 00' 00" W	4.87
L148	STATION 148	STATION 149	490.91	N 89° 15' 00" E	4.90
L149	STATION 149	STATION 150	494.16	N 10° 15' 00" E	4.94
L150	STATION 150	STATION 151	497.42	S 89° 45' 00" W	4.97
L151	STATION 151	STATION 152	500.67	S 10° 00' 00" W	5.00
L152	STATION 152	STATION 153	503.93	N 89° 15' 00" E	5.03
L153	STATION 153	STATION 154	507.18	N 10° 15' 00" E	5.07
L154	STATION 154	STATION 155	510.44	S 89° 45' 00" W	5.10
L155	STATION 155	STATION 156	513.69	S 10° 00' 00" W	5.13
L156	STATION 156	STATION 157	516.95	N 89° 15' 00" E	5.16
L157	STATION 157	STATION 158	520.20	N 10° 15' 00" E	5.20
L158	STATION 158	STATION 159	523.46	S 89° 45' 00" W	5.23
L159	STATION 159	STATION 160	526.71	S 10° 00' 00" W	5.26
L160	STATION 160	STATION 161	530.00	N 89° 15' 00" E	5.30
L161	STATION 161	STATION 162	533.25	N 10° 15' 00" E	5.33
L162	STATION 162	STATION 163	536.51	S 89° 45' 00" W	5.36
L163	STATION 163	STATION 164	539.76	S 10° 00' 00" W	5.39
L164	STATION 164	STATION 165	543.02	N 89° 15' 00" E	5.43
L165	STATION 165	STATION 166	546.		