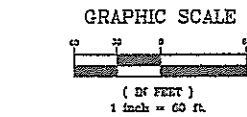
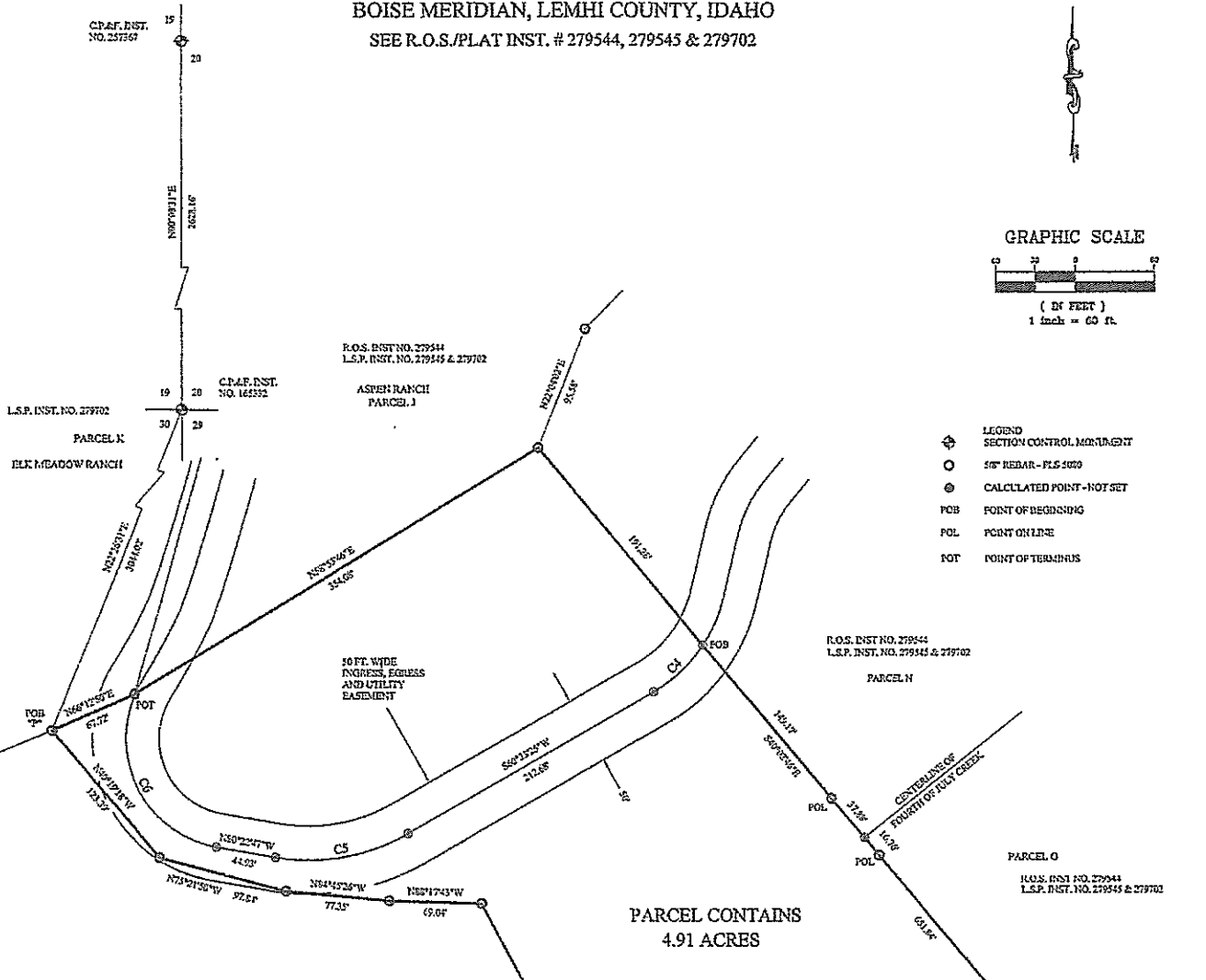


new plat aug 11/24/14

RECORD OF SURVEY

LOCATED IN THE E 1/2 OF SECTION 30, T. 24 N., R. 22 E.,
BOISE MERIDIAN, LEMHI COUNTY, IDAHO
SEE R.O.S./PLAT INST. # 279544, 279545 & 279702



- LEGEND**
- ◆ SECTION CONTROL MONUMENT
 - 5/8" REDBAR - PLS SURV
 - CALCULATED POINT - NOT SET
 - POINT OF BEGINNING
 - POL POINT ON LINE
 - POT POINT OF TERMINUS

CURVE TABLE

CURVE	DELTA	ARC LENGTH	RADIUS	(TANGENT)	CHORD	CHORD BEARING
C1	177.14	177.14	435.2	177.20	177.20	S 64°27'44" W
C2	102.70	102.70	443.1	102.71	102.71	S 40°02'45" E
C3	29.45	29.45	443.1	29.45	29.45	S 40°02'45" E
C4	31.85	31.85	115.09	31.85	31.85	N 80°17'41" W
C5	148.60	148.60	150.09	148.60	148.60	N 80°17'41" W
C6	102.70	102.70	443.1	102.71	102.71	S 40°02'45" E

PARCEL DESCRIPTION

A parcel of land located in the E1/2 Section 30, T. 24 N., R. 22 E., Boise Meridian, Lemhi County, Idaho, more particularly described as follows:

Commencing at the SW Corner of Section 28, from which the W1/4 Corner of Section 28 bears N 00°08'31" E a distance of 2521.16 ft., the **Point of Beginning** of this description, run thence S 22°29'31" W a distance of 3044.02 ft. to the **POINT OF BEGINNING**;

Thence N 66°12'50" E a distance of 67.72 ft.;

Thence N 69°45'40" E a distance of 35.63 ft.;

Thence S 40°02'45" E a distance of 651.84 ft. to a point on the northerly right-of-way of Fourth of July Creek Ranch;

Thence the following courses and distances along said right-of-way:

S 59°02'38" W 155.03 ft. 177.14 ft. along a non-tangent curve to the right having a chord of S 64°27'44" W 177.50 ft., a delta of 10°51'10" and a radius of 626.63 ft.;

Thence N 29°45'58" W a distance of 369.23 ft.;

Thence N 80°17'41" W a distance of 69.04 ft.;

Thence N 24°45'28" W a distance of 77.33 ft.;

Thence N 89°11'10" W a distance of 93.84 ft.;

Thence S 40°19'18" W a distance of 123.39 ft. to the **POINT OF BEGINNING**.

PARCEL CONTAINS 4.91 ACRES

SUBJECT TO: A 50 ft. wide ingress, egress, and utility easement, 25 ft. either side of the following described easement.

Commencing at the **POINT OF BEGINNING** of said Parcel "J" run thence the following courses along the boundary of said parcel:

N 69°45'40" E 67.72 ft. S 49°55'46" E 254.04 ft. S 40°02'45" E 191.25 ft. to the **POINT OF BEGINNING** of said easement.

Thence the following courses along said easement:

51.65 ft. along a curve to the right having a chord of S 64°27'44" W 51.17 ft., a delta of 2°54'05" and a radius of 110.00 ft.;

S 60°12'24" W 212.68 ft.;

102.70 ft. along a curve to the right having a chord of S 40°02'45" W 100.71 ft., a delta of 2°31'47" and a radius of 150.09 ft.;

N 80°22'47" W 44.85 ft.;

148.60 ft. along a curve to the right having a chord of N 27°46'27" W 128.01 ft., a delta of 18°07'41" and a radius of 81.63 ft. to a point on the northerly boundary of said parcel and the **POINT OF TERMINUS**.

LEMHI COUNTY APPROVAL
AUG 28 2014

COUNTY RECORDER'S CERTIFICATE

INSTRUMENT # 279544
LEMHI COUNTY, Idaho
DATE: Aug 28, 2014 3:05:53 pm
FEE: WAIVER SURVEYING
TERI J. MORISON, Recorder
BARNSTRONG Deputy

Pages: 1
Fee: 5.00

BOOK: 19 PAGE: 76 INST. NO.

FER
FOURTH OF JULY CREEK, L.L.C.

DATE: 8-21-2014 DRAWN/CHK: BY: RML/JW
PROJECT: W21R2224W JULY CREEK, LLC
DWG NAME: AMENDED PARCEL P.DWG
SURVEY: ALLPOINT ZAK
LEGAL DESCR: AMENDED PARCEL P.DOC

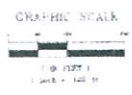
PROFESSIONAL LAND SURVEYOR
5080

LEGEND

- ◀ BOUNDARY MARKERS
- POINTS OF BEGINNING
- CENTERLINE OF DEED
- CENTERLINE OF CREEK
- CENTERLINE OF ROAD
- CENTERLINE OF FENCE
- CENTERLINE OF EASEMENT
- CENTERLINE OF DITCH
- CENTERLINE OF RAILROAD
- CENTERLINE OF POWER LINE
- CENTERLINE OF TELEPHONE LINE
- CENTERLINE OF GAS LINE
- CENTERLINE OF WATER LINE
- CENTERLINE OF SEWER LINE
- CENTERLINE OF DRAINAGE
- CENTERLINE OF IRRIGATION CANAL
- CENTERLINE OF FLOOD CONTROL CHANNEL
- CENTERLINE OF FISH PASSAGE CHANNEL
- CENTERLINE OF NAVIGATION CHANNEL
- CENTERLINE OF TIDAL CHANNEL
- CENTERLINE OF NON-TIDAL CHANNEL
- CENTERLINE OF OPEN CHANNEL
- CENTERLINE OF COVERED CHANNEL
- CENTERLINE OF UNDERGROUND CHANNEL
- CENTERLINE OF SURFACE CHANNEL
- CENTERLINE OF PERMANENT CHANNEL
- CENTERLINE OF TEMPORARY CHANNEL
- CENTERLINE OF NATURAL CHANNEL
- CENTERLINE OF ARTIFICIAL CHANNEL
- CENTERLINE OF IMPROVED CHANNEL
- CENTERLINE OF UNIMPROVED CHANNEL
- CENTERLINE OF MAINTAINED CHANNEL
- CENTERLINE OF ABANDONED CHANNEL
- CENTERLINE OF DRY CHANNEL
- CENTERLINE OF FRESHWATER CHANNEL
- CENTERLINE OF SALTWATER CHANNEL
- CENTERLINE OF BRACKISH CHANNEL
- CENTERLINE OF POLYHALINE CHANNEL
- CENTERLINE OF EUHALINE CHANNEL
- CENTERLINE OF HYPERSALINE CHANNEL
- CENTERLINE OF HYPERHALINE CHANNEL
- CENTERLINE OF SUPERHALINE CHANNEL
- CENTERLINE OF ULTRAHALINE CHANNEL
- CENTERLINE OF POLYHALINE CHANNEL
- CENTERLINE OF EUHALINE CHANNEL
- CENTERLINE OF HYPERSALINE CHANNEL
- CENTERLINE OF HYPERHALINE CHANNEL
- CENTERLINE OF SUPERHALINE CHANNEL
- CENTERLINE OF ULTRAHALINE CHANNEL

ELK MOUNTAIN RANCH
LOT SPLIT PLAT & RECORD OF SURVEY
 LOCATED IN SECTIONS 19, 20, 29, 30 T. 24 N., R. 22 E.,
 BOISE MERIDIAN, LEMHI COUNTY, IDAHO

SEE R.O.S. NOS. # 237760, 258536, 253783, 234987, & 253731
 OWNER: FOURTH OF JULY CREEK, L.L.C.
 NO SPLITS REMAINING ON PARCELS "A" OR "B"
 SPLITS REMAINING ON THE BALANCE OF PROPERTY



LINE	BEARING	DISTANCE	AREA
1	N 89° 58' 00" W	117.00	13.44
2	S 89° 58' 00" E	117.00	13.44
3	S 00° 00' 00" E	117.00	13.44
4	N 89° 58' 00" W	117.00	13.44
5	S 89° 58' 00" E	117.00	13.44
6	S 00° 00' 00" E	117.00	13.44
7	N 89° 58' 00" W	117.00	13.44
8	S 89° 58' 00" E	117.00	13.44
9	S 00° 00' 00" E	117.00	13.44
10	N 89° 58' 00" W	117.00	13.44
11	S 89° 58' 00" E	117.00	13.44
12	S 00° 00' 00" E	117.00	13.44
13	N 89° 58' 00" W	117.00	13.44
14	S 89° 58' 00" E	117.00	13.44
15	S 00° 00' 00" E	117.00	13.44
16	N 89° 58' 00" W	117.00	13.44
17	S 89° 58' 00" E	117.00	13.44
18	S 00° 00' 00" E	117.00	13.44
19	N 89° 58' 00" W	117.00	13.44
20	S 89° 58' 00" E	117.00	13.44
21	S 00° 00' 00" E	117.00	13.44
22	N 89° 58' 00" W	117.00	13.44
23	S 89° 58' 00" E	117.00	13.44
24	S 00° 00' 00" E	117.00	13.44
25	N 89° 58' 00" W	117.00	13.44
26	S 89° 58' 00" E	117.00	13.44
27	S 00° 00' 00" E	117.00	13.44
28	N 89° 58' 00" W	117.00	13.44
29	S 89° 58' 00" E	117.00	13.44
30	S 00° 00' 00" E	117.00	13.44
31	N 89° 58' 00" W	117.00	13.44
32	S 89° 58' 00" E	117.00	13.44
33	S 00° 00' 00" E	117.00	13.44
34	N 89° 58' 00" W	117.00	13.44
35	S 89° 58' 00" E	117.00	13.44
36	S 00° 00' 00" E	117.00	13.44
37	N 89° 58' 00" W	117.00	13.44
38	S 89° 58' 00" E	117.00	13.44
39	S 00° 00' 00" E	117.00	13.44
40	N 89° 58' 00" W	117.00	13.44
41	S 89° 58' 00" E	117.00	13.44
42	S 00° 00' 00" E	117.00	13.44
43	N 89° 58' 00" W	117.00	13.44
44	S 89° 58' 00" E	117.00	13.44
45	S 00° 00' 00" E	117.00	13.44
46	N 89° 58' 00" W	117.00	13.44
47	S 89° 58' 00" E	117.00	13.44
48	S 00° 00' 00" E	117.00	13.44
49	N 89° 58' 00" W	117.00	13.44
50	S 89° 58' 00" E	117.00	13.44
51	S 00° 00' 00" E	117.00	13.44
52	N 89° 58' 00" W	117.00	13.44
53	S 89° 58' 00" E	117.00	13.44
54	S 00° 00' 00" E	117.00	13.44
55	N 89° 58' 00" W	117.00	13.44
56	S 89° 58' 00" E	117.00	13.44
57	S 00° 00' 00" E	117.00	13.44
58	N 89° 58' 00" W	117.00	13.44
59	S 89° 58' 00" E	117.00	13.44
60	S 00° 00' 00" E	117.00	13.44
61	N 89° 58' 00" W	117.00	13.44
62	S 89° 58' 00" E	117.00	13.44
63	S 00° 00' 00" E	117.00	13.44
64	N 89° 58' 00" W	117.00	13.44
65	S 89° 58' 00" E	117.00	13.44
66	S 00° 00' 00" E	117.00	13.44
67	N 89° 58' 00" W	117.00	13.44
68	S 89° 58' 00" E	117.00	13.44
69	S 00° 00' 00" E	117.00	13.44
70	N 89° 58' 00" W	117.00	13.44
71	S 89° 58' 00" E	117.00	13.44
72	S 00° 00' 00" E	117.00	13.44
73	N 89° 58' 00" W	117.00	13.44
74	S 89° 58' 00" E	117.00	13.44
75	S 00° 00' 00" E	117.00	13.44
76	N 89° 58' 00" W	117.00	13.44
77	S 89° 58' 00" E	117.00	13.44
78	S 00° 00' 00" E	117.00	13.44
79	N 89° 58' 00" W	117.00	13.44
80	S 89° 58' 00" E	117.00	13.44
81	S 00° 00' 00" E	117.00	13.44
82	N 89° 58' 00" W	117.00	13.44
83	S 89° 58' 00" E	117.00	13.44
84	S 00° 00' 00" E	117.00	13.44
85	N 89° 58' 00" W	117.00	13.44
86	S 89° 58' 00" E	117.00	13.44
87	S 00° 00' 00" E	117.00	13.44
88	N 89° 58' 00" W	117.00	13.44
89	S 89° 58' 00" E	117.00	13.44
90	S 00° 00' 00" E	117.00	13.44
91	N 89° 58' 00" W	117.00	13.44
92	S 89° 58' 00" E	117.00	13.44
93	S 00° 00' 00" E	117.00	13.44
94	N 89° 58' 00" W	117.00	13.44
95	S 89° 58' 00" E	117.00	13.44
96	S 00° 00' 00" E	117.00	13.44
97	N 89° 58' 00" W	117.00	13.44
98	S 89° 58' 00" E	117.00	13.44
99	S 00° 00' 00" E	117.00	13.44
100	N 89° 58' 00" W	117.00	13.44

ASPEN RANCH
 PARCEL J
 19.40 ACRES

PARCEL C
 CREEKSIDE RANCH
 11.63 ACRES

UPPER ROLLING ROCK RANCH
 PARCEL B
 10.59 ACRES

PARCEL A
 LOWER ROLLING
 ROCK RANCH
 8.93 ACRES

COUNTY RECORDER'S
 CERTIFICATE

FOURTH OF JULY CREEK, L.L.C.
 RECORDER

R.O.S. #
 257929 &
 253784

SHEET 4 OF 8



WADE SURVEYING
 1000 W. MAIN ST. SUITE 100
 BOISE, IDAHO 83725
 (208) 333-1111

BK9 Pg 25