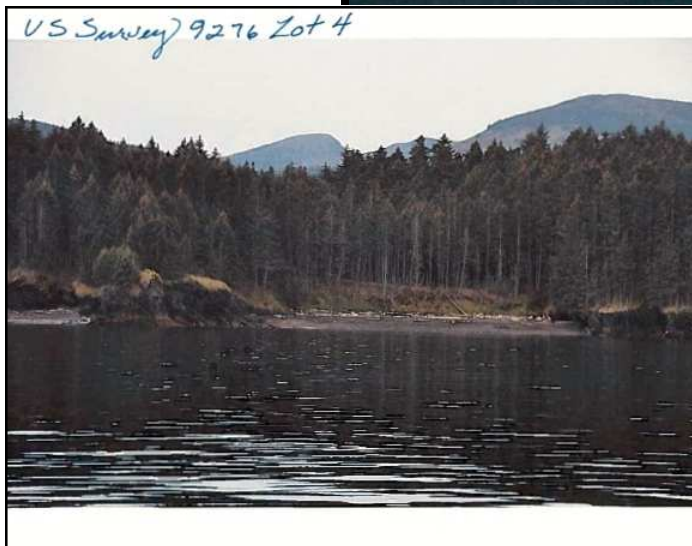
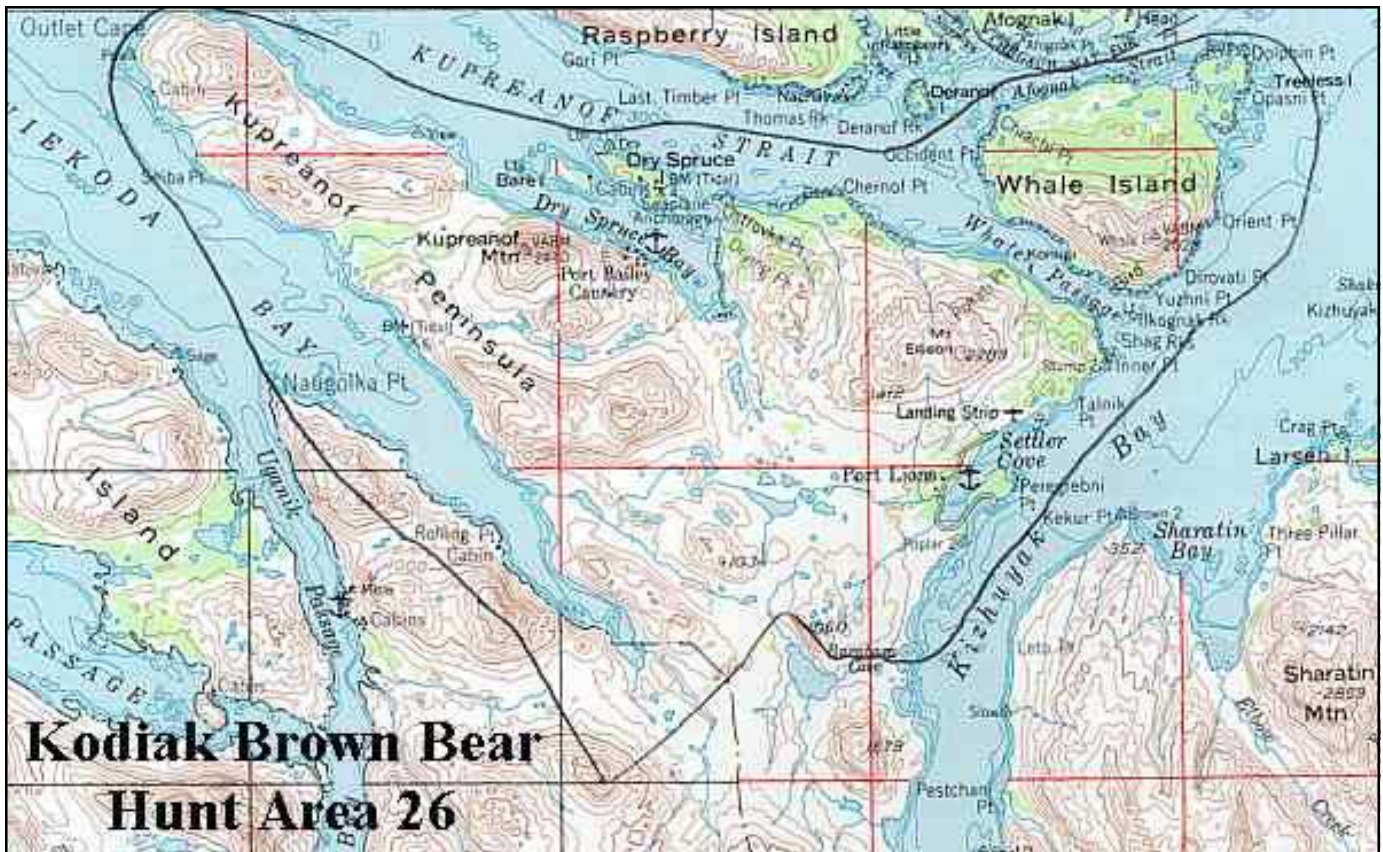


# Coastal Realty Homer

DRY SPRUCE ISLAND 159.98 ACRE ESTATE



This 159.98 acre parcel is located on Dry Spruce Island in Kupreanof Strait between Raspberry Island and the Kupreanof Peninsula of Kodiak Island. This is a rare piece of pristine Alaskan land which is held as a Native Allotment and has never been on the public real estate market before now. With so much acreage and waterfront on both Dry Spruce Bay and Kupreanof Strait, this is the perfect spot for world-class fishing lodge or an executive retreat.



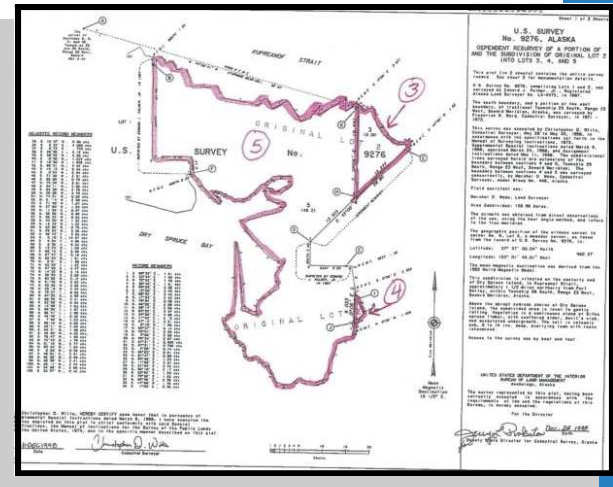
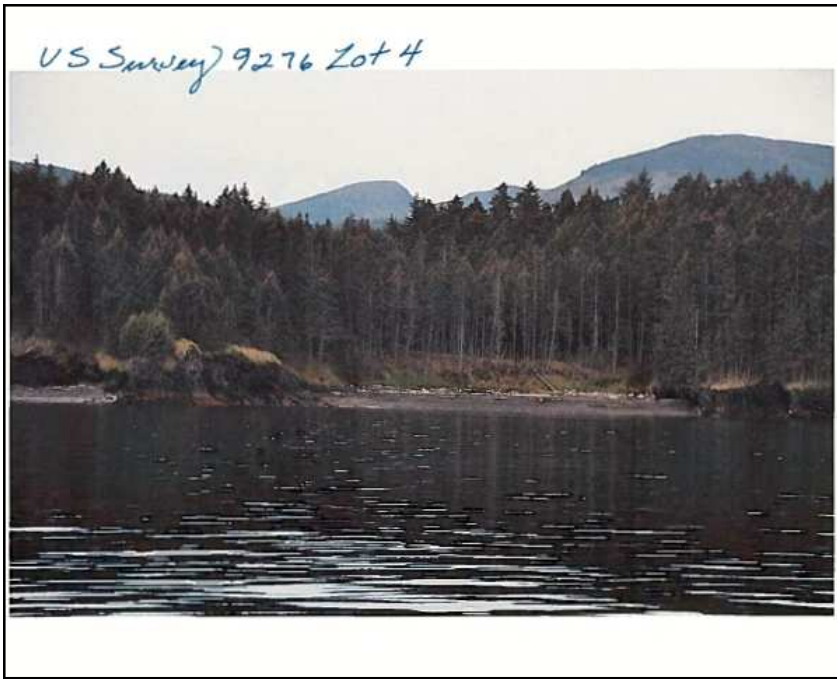
Kodiak Island is world-famous for Brown Bear hunting and Dry Spruce Island is in Kodiak Brown Bear Hunt Area 26. This area is also known for fantastic fishing opportunities and world-record catches of many species plus subsistence crab fishing. May through June is the “Trophy King” season with thirty to ninety pound King Salmon known to feed in these waters. July is one of the best months to catch a variety of fish including, Halibut, Ling Cod, Gray Cod, Yellow Eye, Black Bass and Silver Salmon. August is when the Silver Salmon are really plentiful with an average weight of fifteen pounds. Besides hunting and fishing, this area is a photographer’s dream with spectacular scenery all around and many opportunities to spot wildlife. Great boating and kayaking adventures await you with miles of shore-





Though this parcel is remote and untouched, it is easily accessible by boat or seaplane. The Port Bailey Seaplane Base is just across Dry Spruce Bay from the island, and the Alaska State Ferry arrives regularly in nearby Port Lyons.





159.98 Acres on Dry Spruce Island offered at \$795,000



**COASTAL REALTY HOMER**  
 375 W. Pioneer Ave  
 Homer, AK 99603  
 907-235-7700  
[www.alaskacoastalrealty.com](http://www.alaskacoastalrealty.com)  
 Art Swisher Owner/Broker  
 Ken Swisher Associate

