



Fort McPherson Wildlife



1/2 Mile of Platte River Bottom

Mike Lashley

Broker | Owner

Mike's Cell: (308) 530-0134

E-mail: mike@lashleyland.com



Property Highlights

LIST PRICE	\$275,000.00
LOCATION	5 miles South and 4 miles East of Maxwell, Nebraska
LEGAL DESCRIPTION	Township 12 North, Range 28 west of the 6th P.M., Lincoln County, Nebraska: Section 13: Pt. E 1/2, more particularly described in attached "Exhibit A"
ACRES	73 ±
TAXES - Estimated	\$3,500.00
IMPROVEMENTS	None

PROPERTY SUMMARY

This is a unique piece of Platte River bottom. Warm water sloughs, heavy timber, and a secluded location make this a special place. This property is only 15 minutes from the North Platte regional airport.

This ideal recreational opportunity has abundant wildlife including, Whitetail deer, Wild Turkey, Ducks, Geese, Pheasant, Bobwhite Quail, Dove, and more. Trail and road development would greatly enhance access for hunting and the value of the property.



All information herein is from sources deemed reliable, however the accuracy is not guaranteed by Lashley Land and Recreational Brokers, Inc., seller or agent. Offering is subject to error, omissions, prior sale, price change or withdrawal without notice.

MIKE LASHLEY – Broker | Owner
(308) 530-0134 (Cell)
mike@lashleyland.com

Property Highlights



HUNTING & RECREATION OPPORTUNITIES

- ★ Whitetail Deer
- ★ Wild Turkey
- ★ Ducks
- ★ Geese
- ★ Pheasant
- ★ Bobwhite Quail
- ★ Dove



Location Map



Boundary Lines Are Estimates - Map For Illustration Only

MIKE LASHLEY – Broker | Owner
(308) 530-0134 (Cell)
mike@lashleyland.com

Aerial Map



Boundary Lines Are Estimates - Map For Illustration Only

LashleyLand.com



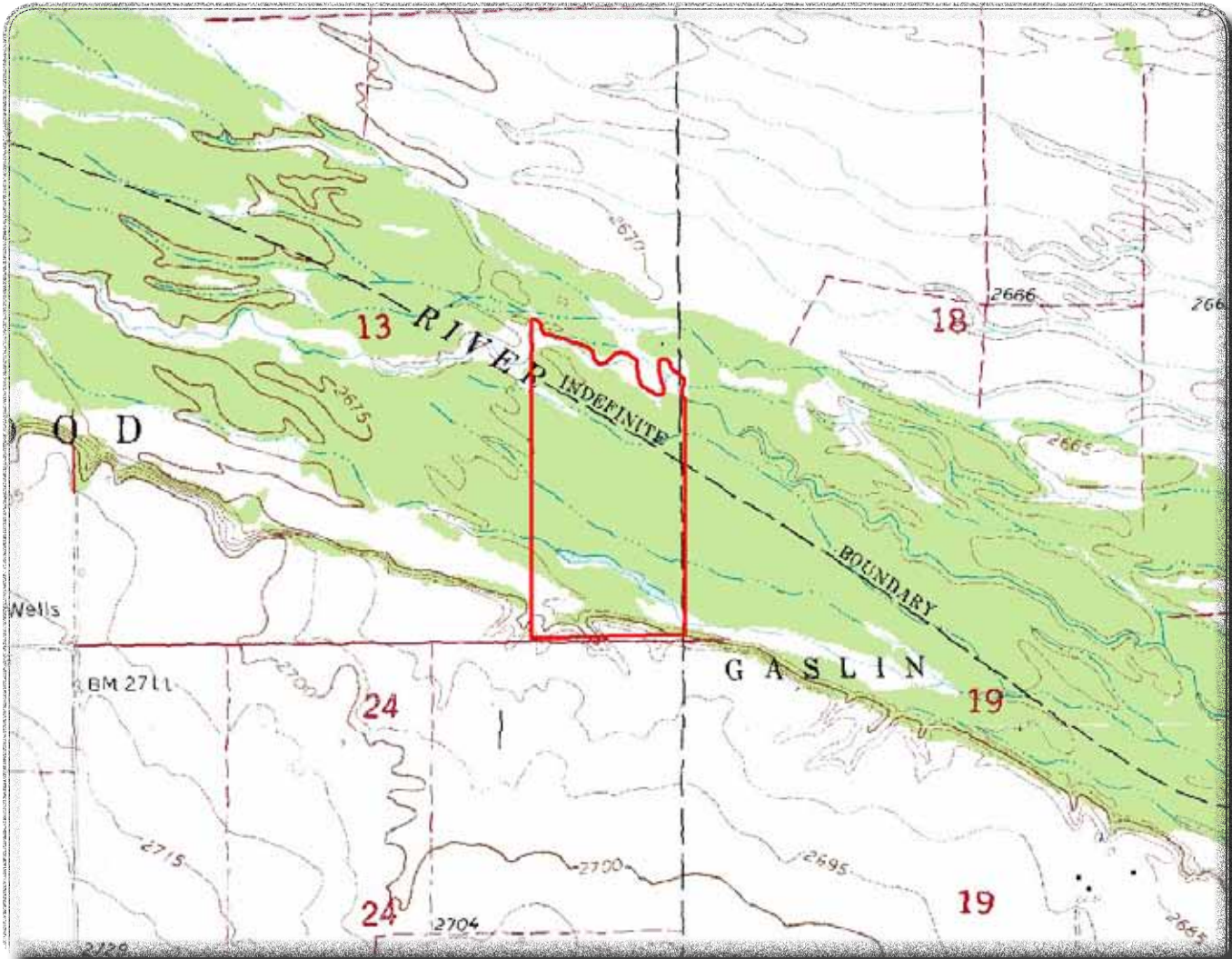
Location-Imagery Map



Boundary Lines Are Estimates - Map For Illustration Only

MIKE LASHLEY – Broker | Owner
(308) 530-0134 (Cell)
mike@lashleyland.com

Topo Map



Boundary Lines Are Estimates - Map For Illustration Only

LashleyLand.com



Property Images



MIKE LASHLEY – Broker | Owner
(308) 530-0134 (Cell)
mike@lashleyland.com

Property Images



Property Images



MIKE LASHLEY – Broker | Owner
(308) 530-0134 (Cell)
mike@lashleyland.com

Property Images





The Land Experts You Can Trust

CONTACT INFORMATION

(308) 532-9300 – Office

(308) 532-1854 – Fax

MIKE LASHLEY, BROKER / OWNER

**Scott Saults, Duane McClain, Skip Marland,
Adam Marshall, Lucy Thierer and Amy Johnston**

info@lashleyland.com

LASHLEYLAND.COM

2218 E. Walker Road, North Platte, Nebraska 69101



*Socialize with us
on Facebook!*