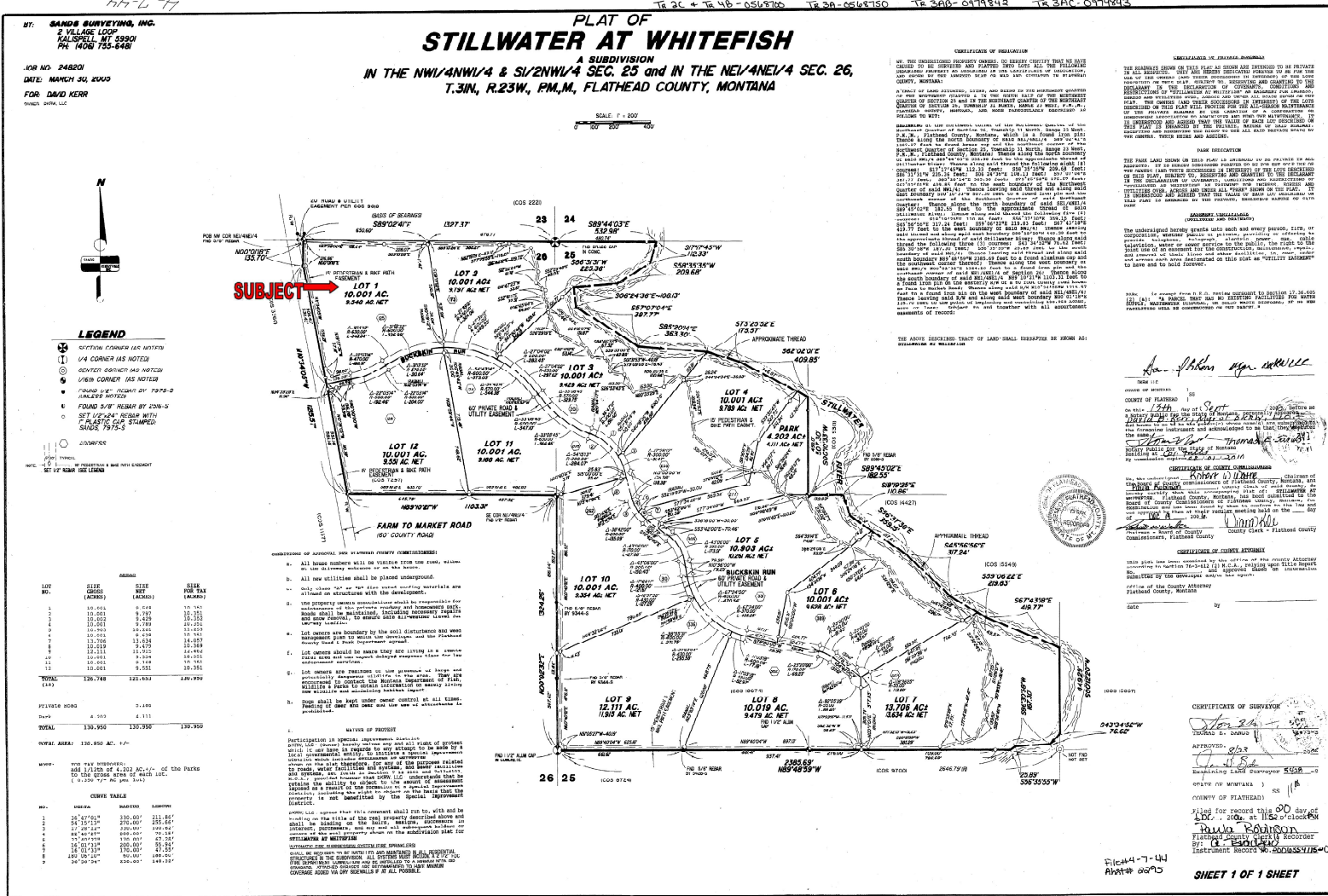


"This plat is provided solely for the purpose of assisting in locating the land and the Company assumes no liability for variations, if any, with actual survey." Insured Titles



PLAT OF STILLWATER AT WHITEFISH
 A SUBDIVISION
 IN THE NW1/4NW1/4 & S1/2NW1/4 SEC. 25 and IN THE NE1/4NE1/4 SEC. 26,
 T.31N., R.23W., PM., M., FLATHEAD COUNTY, MONTANA

SCALE 1" = 200'

BY: **SANDS SURVEYING, INC.**
 2 VILLAGE LOOP
 KALISPELL, MT 59901
 PH: (406) 755-6481

JOB NO. 248201
 DATE: MARCH 30, 2000
 FOR: D&W KERR
 00000 0000 0000

- LEGEND**
- 1. SURVEY CORNER (AS NOTED)
 - 2. 1/4 CORNER (AS NOTED)
 - 3. INTERIOR SURVEY CORNER (AS NOTED)
 - 4. CORNER CORNER (AS NOTED)
 - 5. FOUND 1/4" CORNER BY 7973-5
 - 6. FOUND 1/4" REBAR BY 209-5
 - 7. SET 1/4" REBAR WITH 1" PLASTIC CAP STAMPED SANDS 7973-5
 - 8. 1/4 CORNER
 - 9. INTERIOR CORNER AND NOT LOCATED
 - 10. SET 1/4" REBAR (SEE LEGEND)

LOT NO.	SIZE (ACRES)	SIZE (SQUARE FEET)	SIZE (SQUARE FEET)	SIZE (SQUARE FEET)
1	10.001	6,918	10,363	
2	10.001	6,918	10,363	
3	10.001	6,918	10,363	
4	10.001	6,918	10,363	
5	10.001	6,918	10,363	
6	10.001	6,918	10,363	
7	10.001	6,918	10,363	
8	10.001	6,918	10,363	
9	10.001	6,918	10,363	
10	10.001	6,918	10,363	
11	10.001	6,918	10,363	
12	10.001	6,918	10,363	
TOTAL (12)	120.012	83,016	124,356	124,356

FEES	AMOUNT	TOTAL
PLATING FEE	3.000	
DATE	4.500	4.500
TOTAL	330.950	330.950
NET AREA:	120.950 AC. +/-	

LOT NO.	AREA (SQUARE FEET)	PERCENTAGE (%)
1	8,363.000	6.91%
2	8,363.000	6.91%
3	8,363.000	6.91%
4	8,363.000	6.91%
5	8,363.000	6.91%
6	8,363.000	6.91%
7	8,363.000	6.91%
8	8,363.000	6.91%
9	8,363.000	6.91%
10	8,363.000	6.91%
11	8,363.000	6.91%
12	8,363.000	6.91%
TOTAL	100,000.000	100.00%

CERTIFICATE OF INSURANCE

WE, THE UNDERSIGNED PROPERTY OWNERS, TO WHOM THESE PLATS HAVE BEEN ISSUED, DO HEREBY CERTIFY AND WARRANT THAT ALL THE INFORMATION CONTAINED HEREIN IS TRUE AND CORRECT TO THE BEST OF OUR KNOWLEDGE AND BELIEF, AND THAT WE HAVE NO KNOWLEDGE OF ANY FACTS WHICH MIGHT AFFECT THE VALIDITY OF THE INFORMATION CONTAINED HEREIN.

CERTIFICATE OF SURVEY

THE UNDERSIGNED HAS CAUSED THIS PLAT TO BE SURVEYED BY ME IN ACCORDANCE WITH THE PROVISIONS OF THE MONTANA SURVEYING ACT, AND THE SURVEY HAS BEEN MADE IN ACCORDANCE WITH THE PROVISIONS OF SAID ACT.

STATE OF MONTANA
 COUNTY OF FLATHEAD

I, *Paula Robinson*, Surveyor, do hereby certify that the above is a true and correct copy of the original records on file in my office.

NOTARY PUBLIC
 My Comm. Expires 12/31/2001

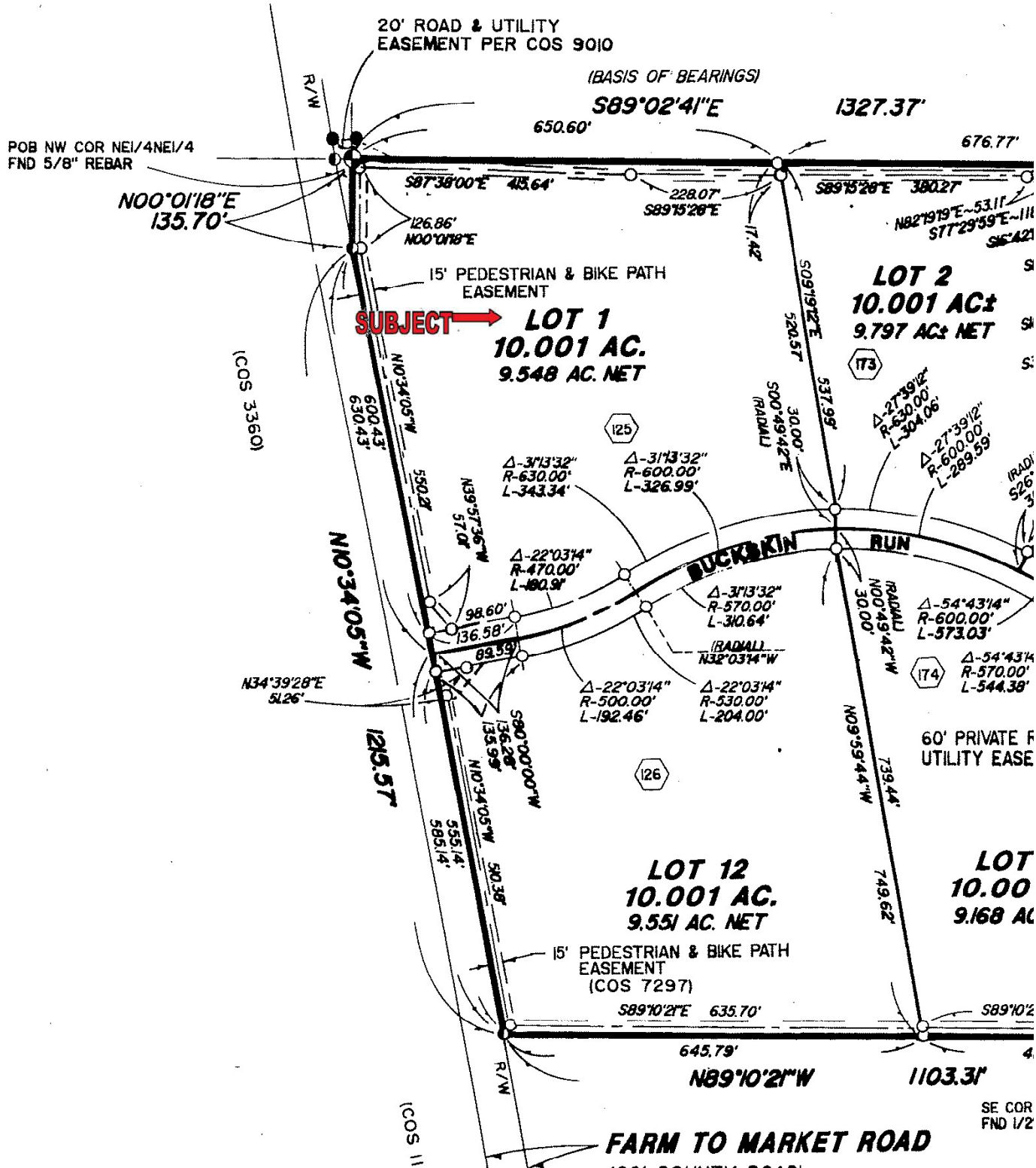
Paula Robinson
 Surveyor

CERTIFICATE OF COUNTY COMMISSIONERS
 The undersigned County Commissioners of Flathead County, Montana, do hereby certify that the above is a true and correct copy of the original records on file in our office.

COUNTY OF FLATHEAD

By: *Paula Robinson*
 Clerk of County

"This plat is provided solely for the purpose of assisting in locating the land and the Company assumes no liability for variations, if any, with actual survey." Insured Titles



TED)

TED)

ED)

7975-S

2516-S

TH

D: