

MONTANA DREAM TEAM



NHN HUGH LILLARD

/LUXURYHOMES/PROPERTY/RANCH/



JEANNETTE@CMPMONTANA.COM
406.270.3921

/1/

MARK@CMPMONTANA.COM
406.270.4284

INTRODUCTION HERON

MT Highway 200; 123 miles west of Missoula
31 miles east of Sandpoint, ID

Elevation: 2,251'

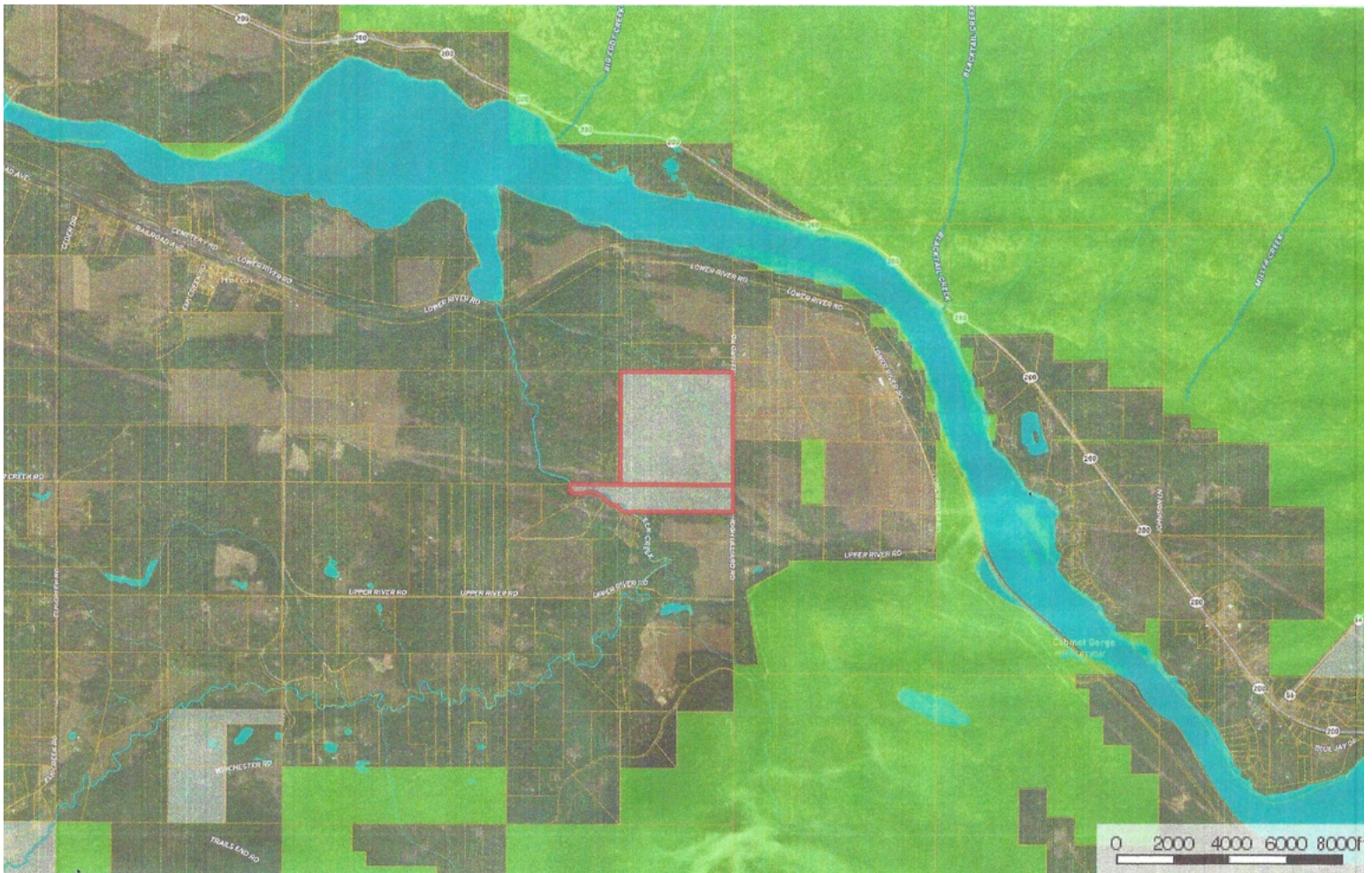
Population: 141 (2019)

The town of Heron is located between the beautiful Cabinet and Bitterroot Mountains in western Montana bordering Idaho. This small, rural community is situated on the Clark Fork River in Sanders County. Heron is a friendly little town supported by many people from every walk of life, and a more beautiful place to relax would be hard to find.

205 acres with Elk Creek meandering through the property, with a mix of open areas, trees, trails, and wildlife galore. Elk, deer, bears, and an occasional moose, frequent the property. Stunning, sweeping views of the the surrounding mountains. Great build sites. There are two separate legal descriptions and a conservation easement to protect your investment and the integrity of the property.

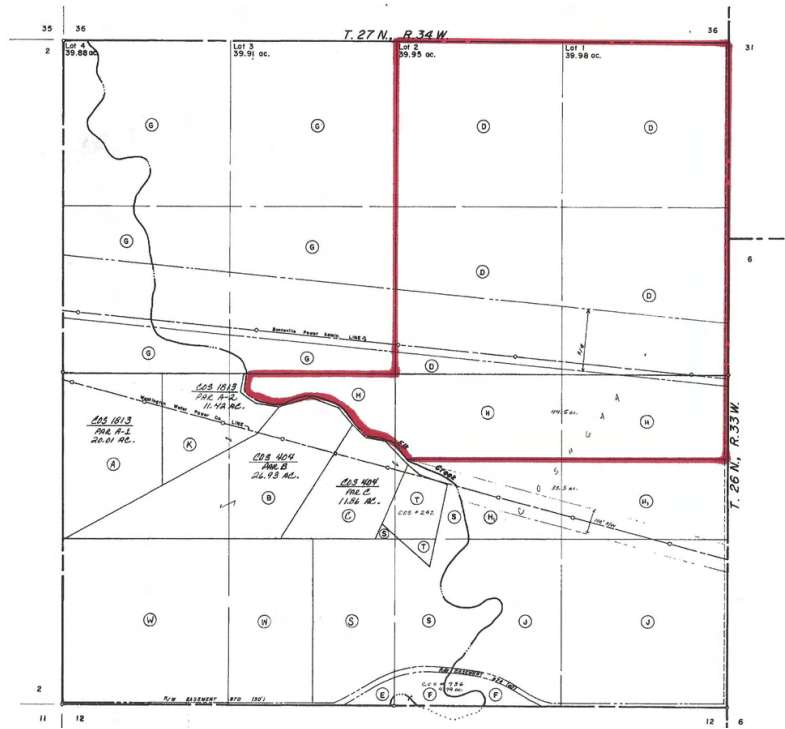


PROPERTY DETAILS





SANDERS COUNTY TRACT BOOK SECTION 1 TOWNSHIP 26 N. RANGE 34 W., P.M.N.



RECREATION - HERON

An outdoor enthusiast's dream, Heron offers many recreational activities. Depending on the season, you can participate in the perfect recreational sport! From hiking, snowshoeing, cross-country skiing, horseback riding, camping, site seeing, hunting and fishing – Heron has it all! Revel in an abundance of wildlife including elk, bighorn sheep, moose, and mountain goats. Black and grizzly bears, fox, coyote, mountain lions and deer all have been seen in the area. Numerous birds, pheasant, turkeys, bald and golden eagles, hawks, turkey, ducks, geese, cranes, and owls also inhabit the area.

FISHING

Heron provides quick and easy access to Cabinet Gorge Reservoir and Noxon Rapids Reservoir. Clark Fork River offers fishing, boating, kayaking, jet skiing, and ice fishing in the winter. The Clark Fork River, stretching from Thompson Falls to Noxon, offers some of the best bass and pike fishing in Northwestern Montana. Averaging only a mile wide, the setting stirs the imagination for a mountainous watershed teeming with trout, and they too cruise through this shallow reservoir known for offering good small mouth and largemouth bass fishing, along with pike, walleye, yellow perch and sun fish. Realistically, fishing access is limited so fishing from a boat is best. Boat ramps are available at USFS campgrounds and Montana Fish Wildlife and Parks facilities. The Big Eddy Campground is located approximately 6 miles east of the Idaho border in Montana on Hwy 200 and offers 5 campsites and a fully developed boat ramp with a dock. There is also the Bull River Campground which has a boat launch and multiple campsites. Cabinet Gorge Reservoir is a 3,000 acre impoundment on the lower Clark Fork River which extends from the Idaho border upstream to the town of Noxon, Montana. This narrow body of water is located below the rocky peaks of the Cabinet Mountains to the north and provides a scenic fishery for warm and cool water species such as Northern Pike, Smallmouth Bass, and Largemouth Bass. Drop your line in the Clark Fork River or the Cabinet Gorge Reservoir for excellent fishing! The Bull River is a smaller mountain stream about 60 feet wide, 4 to 6 feet deep and offers Rainbow, Cutthroat, Brook Trout, Bull and German Brown Trout, and Rocky Mountain Whitefish. Bring your kayaks and enjoy a ride along the Bull River with breathtaking views and hours of exploring. Keep in mind that depending on the season, it may be unsafe in certain areas along the river.



THINGS TO DO-HERON

ROSS CREEK CEDAR

Ross Creek Cedar is a grove of western red cedars, some of which are more than 8 feet in diameter. An interpretive walking tour, slightly less than a mile in length, explains the area ecology and history. The nature trail often follows the banks of Ross Creek which often runs hidden beneath the rocky stream bottom. The waters of Ross come from the rugged alpine basins and peaks of the upper Ross Creek valley. The turnoff to the Ross Creek Cedars is found a half mile past the south end of Bull Lake off Montana Highway 56. Definitely a must see!

KOOTENAI FALLS AND THE SWINGING BRIDGE

Bring the camera and capture the views of the falls area which is a sacred site to the Kootenai Indians who once called this area home. A forest trail leads from the highway parking lot down to the Swinging Bridge and makes a nice hike that is not too strenuous. Kootenai Falls was the setting for the filming of the movie, "River Wild". The trail goes over a special enclosed pedestrian bridge View from train overpass bridge over double railroad tracks, then winds down to the Swinging Bridge which overlooks the falls. There is a picnic area, food services (seasonal), and restrooms. Located at milepost 21 on US Highway 2 between Libby and Troy.



CLIMATE:

Average summer high temperature 81.3°F
 Summer's lowest humidity 43%
 Average winter low temperature 21.8 °F
 Winter's highest humidity 78.6%
 Average annual precipitation 31 inch
 Average annual snowfall 66 inch
 Average sunshine 166 days

DINING:

Amber Bear Inn, Squeeze Inn (Clark Fork), Clark Fork Pantry (Clark Fork)

AIRPORTS:

Airports:Spokane International Airport (GEG) is 118.8 miles from Heron.
 Missoula International Airport (MSO) is 145.7 miles from Heron.
 Glacier Park International Airport (FCA) is 157.9 miles from Heron.
 Smaller airports for private planes include Libby, Thompson Falls, Troy and Sandpoint.

PLACES TO STAY:

Amber Bear Inn, Lakeside Motel & Resort (Trout Creek)

NEARBY DESTINATION-HERON

GLACIER NATIONAL PARK:

Glacier National Park preserves more than a million acres of jagged peaks and glacial-carved valleys in the Northern Rocky Mountains. The park is named for its renowned glacier-carved terrain and remnant glaciers descended from past ice ages. A few glaciers can still be seen in the Park, with their blue ice and crevasses distinguishing them. Most people visit Glacier National Park because of its wild and majestic scenery that combines glacier mountains, pristine turquoise lakes, dense ancient forests and a diverse collection of plants and animals. Glacier Park's varied climate impacts and its location at the headwaters of the Pacific, Atlantic and Hudson Bay drainages have given rise to an incredible variety of plants and animals. The Park provides habitats to over 70 species of mammals including the grizzly bear, wolverine, gray wolf, lynx, cougars, bighorn sheep, mountain goats, elk and moose. Additionally, more than 260 species of birds visit or reside in the park, including such varied species as harlequin ducks, dippers and golden eagles. An extremely popular part of visiting Glacier National Park is taking a hike through the forests and up mountains; the park has over 700 miles of hiking trails! There are also 13 campgrounds for visitors and backpacking camps for trips deep into Glacier's wild interior. Visitors can also take boat tours or horseback trips inside the park.

NATIONAL BISON RANGE:

The National Bison Range was established in 1908 and is one of the oldest wildlife refuges in the United States. It contains over 18,000 acres for the bison, antelope, deer, elk, bighorn sheep, bear and many others to roam. The herd ranges from 350-500 animals and these bison are direct decedents of the first bison in the Mission Valley owned by Michael Pablo and Charles Allard in the late 1800's. The visitor center is highly informative and the 2± hour drive through the range is something everyone must do.

SCHWEITZER MOUNTAIN RESORT:

Just outside of Sandpoint, ID is a great ski resort just one hour away. They have downhill slopes for everyone from back bowls and advanced black slopes to one of the best beginner's slopes we have ever seen. It is long and has a new chair ride. It is a major ski area without the lines. They keep their cross-country trails very well groomed.