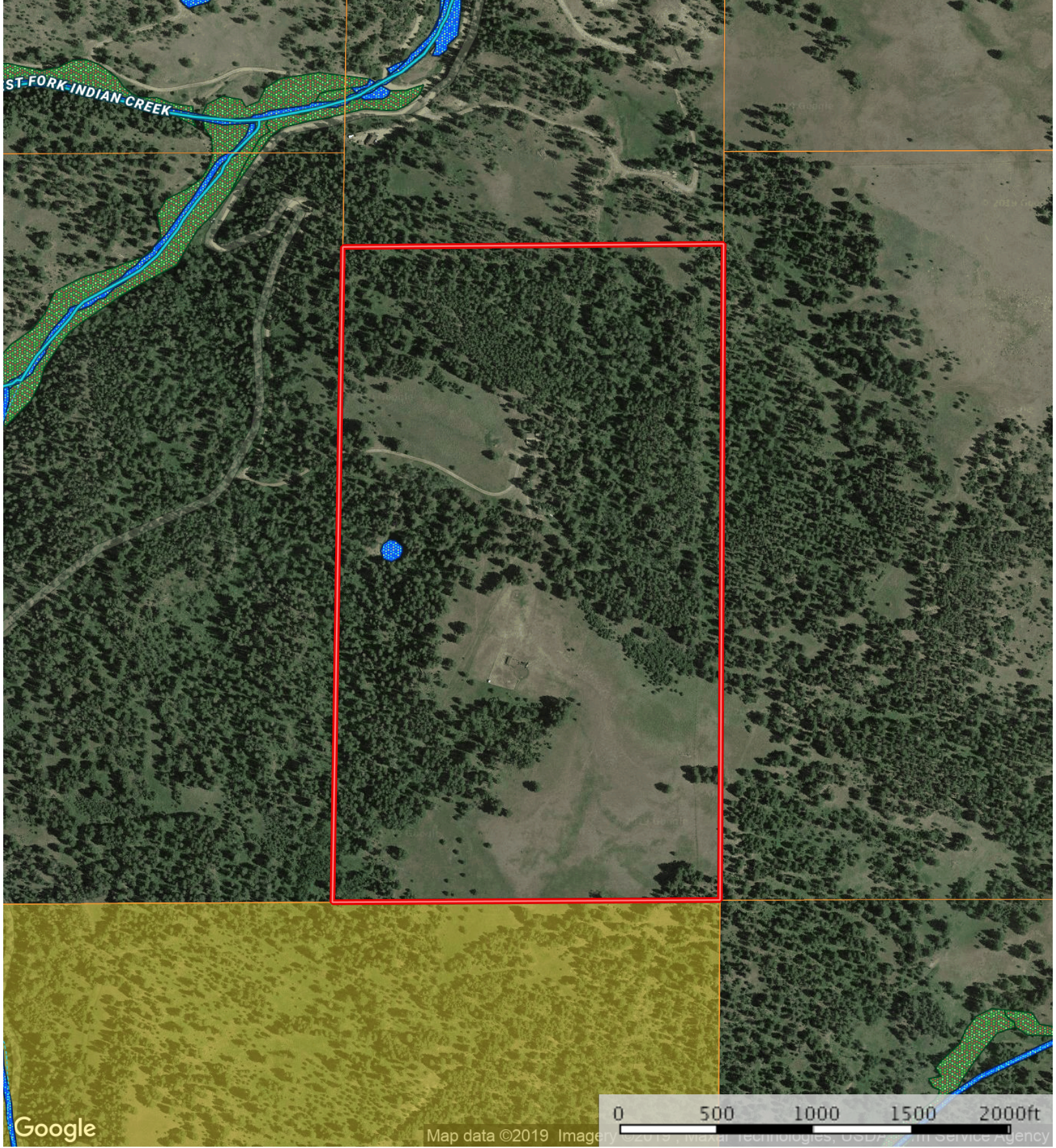


Hover
Powell County, Montana, 70.3 AC +/-



- Boundary
- Forest Service
- State Land
- Fish and Wildlife
- National Park
- Other
- BLM
- Local Government
- Conservation Easements
- Wetlands
- Riparian
- Stream, Intermittent
- River/Creek
- Water Body

The information contained herein was obtained from sources deemed to be reliable. MapRight Services makes no warranties or guarantees as to the completeness or accuracy thereof.