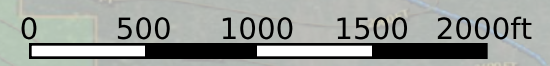
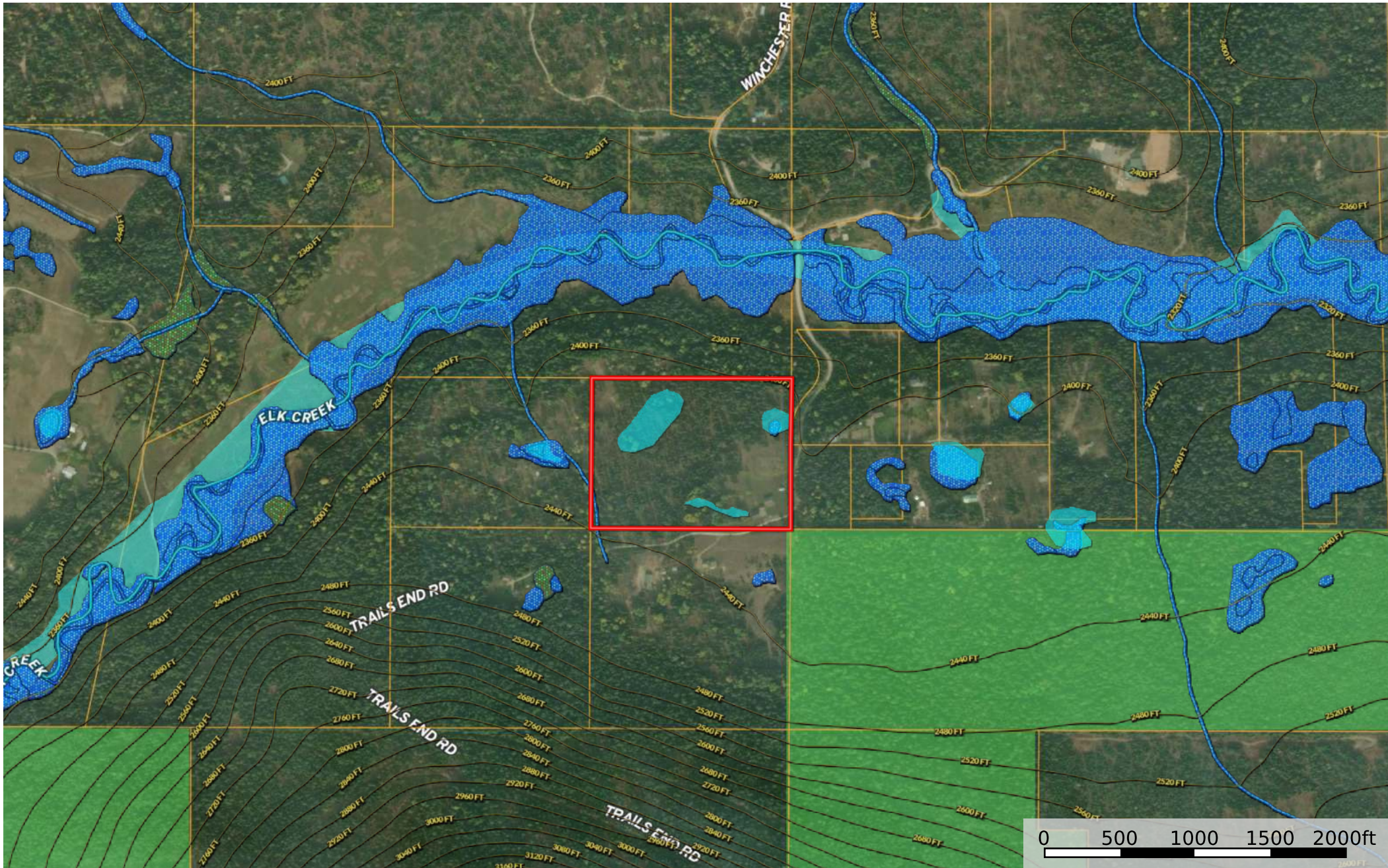


2 Trails End Drive Heron
 Sanders County, Montana, 28 AC +/-



- Boundary
- Forest Service
- State Land
- Fish and Wildlife
- National Park
- Other
- BLM
- Local Government
- 100 Year Floodplain
- 500 Year Floodplain
- Floodway
- Special
- Unmapped/Not Included
- Wetlands
- Riparian
- Stream, Intermittent
- River/Creek
- Water Body