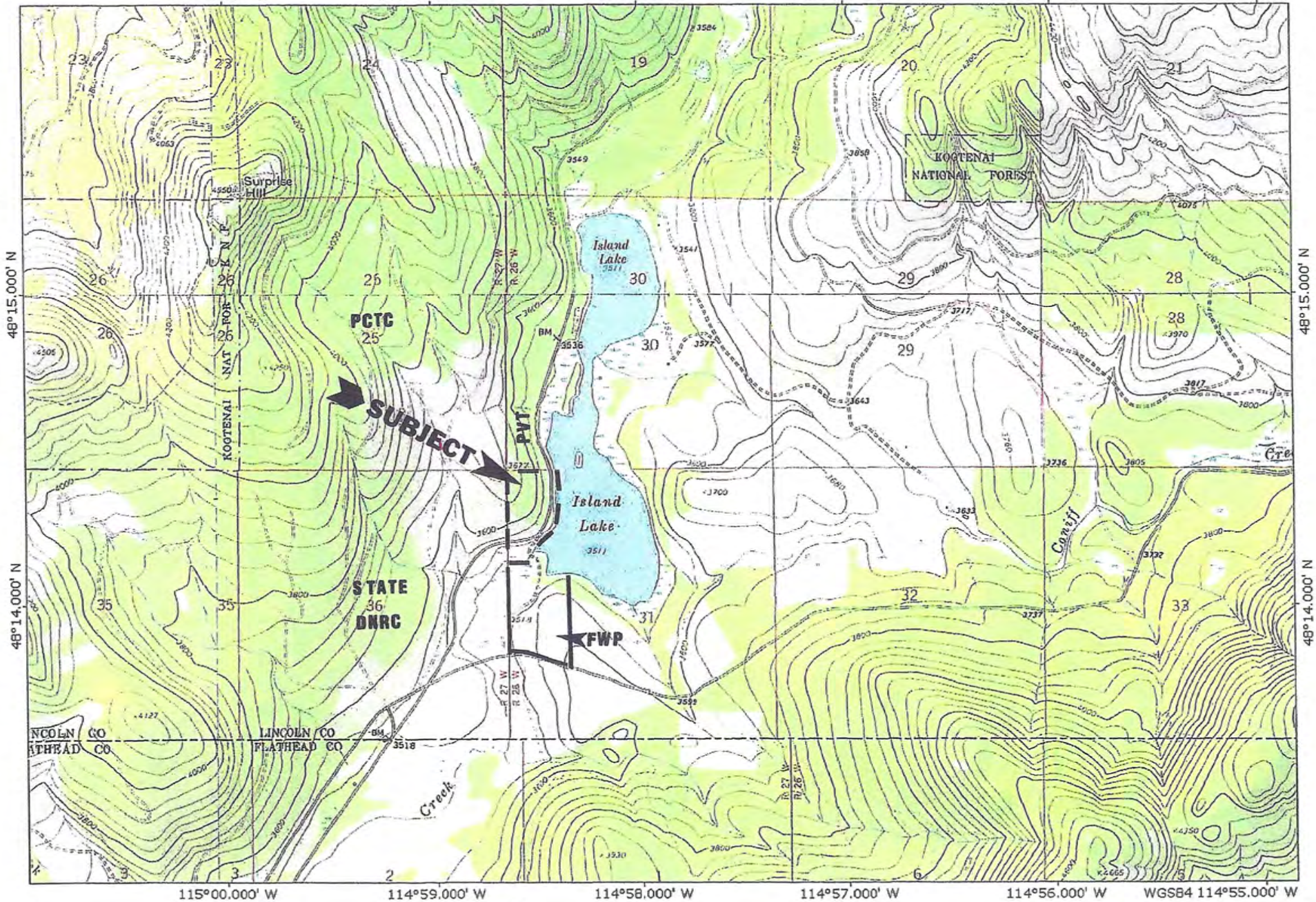


SWAN RIVER VALLEY, MISSOULA COUNTY, MONTANA

115°00.000' W 114°59.000' W 114°58.000' W 114°57.000' W 114°56.000' W WGS84 114°55.000' W



TN
MN
16°

0 1000 FEET 0 500 1000 METERS
0 5 1 MILE
Map created with TOPO! © 2003 National Geographic (www.nationalgeographic.com/topo)