

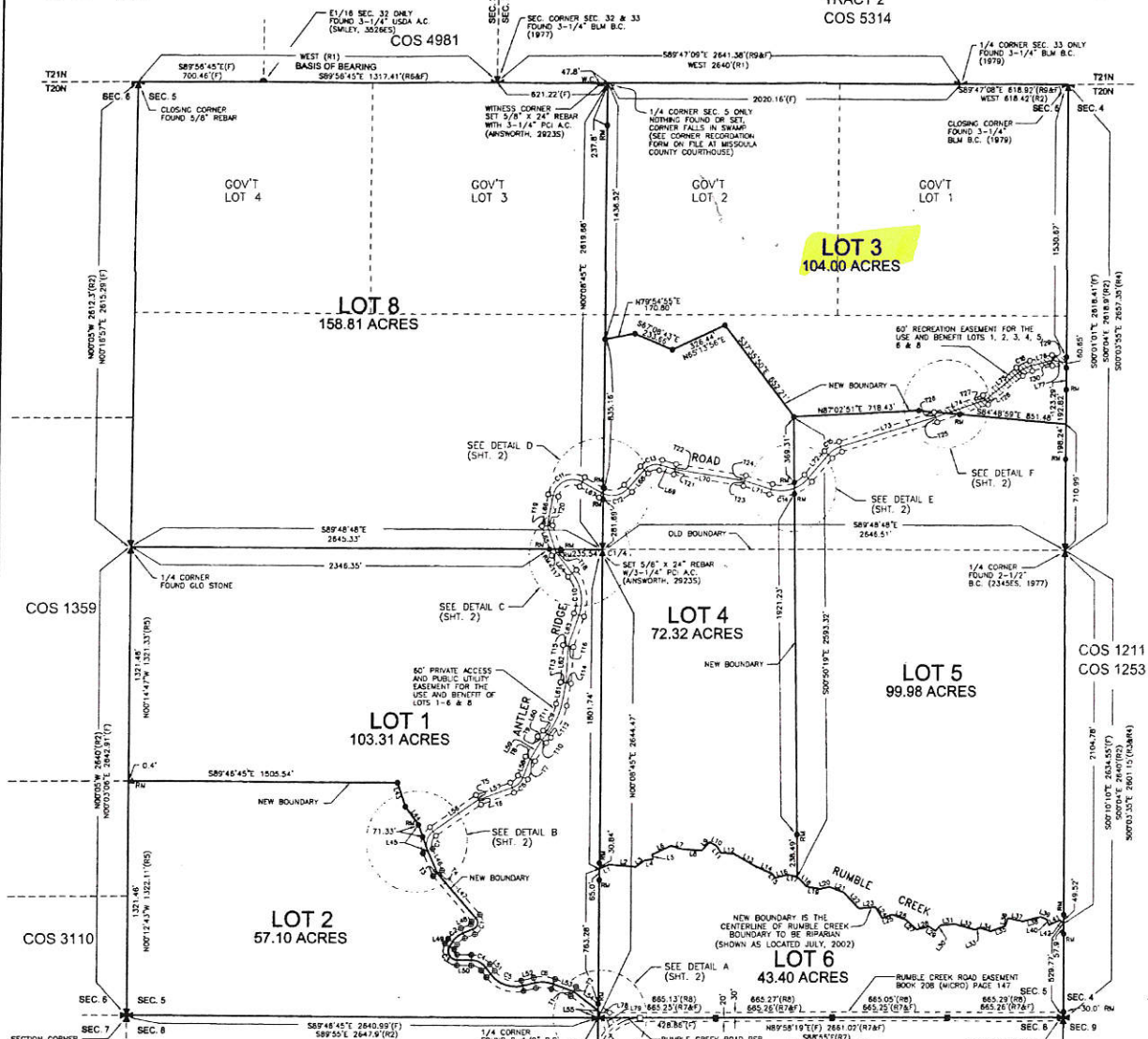
# CERTIFICATE OF SURVEY

TO SHOW THE RELOCATION OF COMMON BOUNDARIES AND THE RETRACEMENT OF AN EXISTING TRACT OF LAND LOCATED IN SECTIONS 5 & 8, T. 20 N., R. 16 W., P.M.M., MISSOULA COUNTY, MONTANA

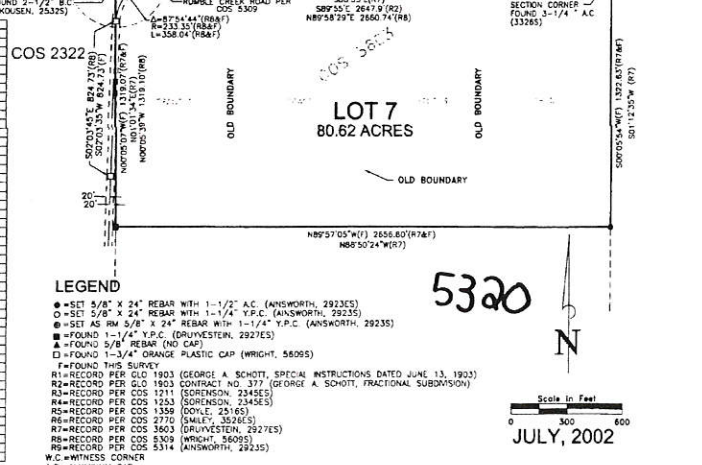
5320

COS 2720

TRACT 2  
COS 5314



LINE	DELTA	RADIUS	ARC/DEG'	BEARING	LINE	DELTA	RADIUS	ARC/DEG'	BEARING
L1	80.23	889.000000	40.02	75.00°	L1	106.2700'	40.02	75.00°	81.262200'
L2	100.00	889.000000	50.00	82.71°	L2	106.2700'	40.02	75.00°	81.262200'
L3	80.00	889.000000	40.00	75.00°	L3	106.2700'	40.02	75.00°	81.262200'
L4	50.00	889.000000	25.00	75.00°	L4	106.2700'	40.02	75.00°	81.262200'
L5	25.00	889.000000	12.50	75.00°	L5	106.2700'	40.02	75.00°	81.262200'
L6	12.50	889.000000	6.25	75.00°	L6	106.2700'	40.02	75.00°	81.262200'
L7	6.25	889.000000	3.12	75.00°	L7	106.2700'	40.02	75.00°	81.262200'
L8	3.12	889.000000	1.56	75.00°	L8	106.2700'	40.02	75.00°	81.262200'
L9	1.56	889.000000	0.78	75.00°	L9	106.2700'	40.02	75.00°	81.262200'
L10	0.78	889.000000	0.39	75.00°	L10	106.2700'	40.02	75.00°	81.262200'
L11	0.39	889.000000	0.19	75.00°	L11	106.2700'	40.02	75.00°	81.262200'
L12	0.19	889.000000	0.09	75.00°	L12	106.2700'	40.02	75.00°	81.262200'
L13	0.09	889.000000	0.05	75.00°	L13	106.2700'	40.02	75.00°	81.262200'
L14	0.05	889.000000	0.02	75.00°	L14	106.2700'	40.02	75.00°	81.262200'
L15	0.02	889.000000	0.01	75.00°	L15	106.2700'	40.02	75.00°	81.262200'
L16	0.01	889.000000	0.00	75.00°	L16	106.2700'	40.02	75.00°	81.262200'
L17	0.00	889.000000	0.00	75.00°	L17	106.2700'	40.02	75.00°	81.262200'
L18	0.00	889.000000	0.00	75.00°	L18	106.2700'	40.02	75.00°	81.262200'
L19	0.00	889.000000	0.00	75.00°	L19	106.2700'	40.02	75.00°	81.262200'
L20	0.00	889.000000	0.00	75.00°	L20	106.2700'	40.02	75.00°	81.262200'
L21	0.00	889.000000	0.00	75.00°	L21	106.2700'	40.02	75.00°	81.262200'
L22	0.00	889.000000	0.00	75.00°	L22	106.2700'	40.02	75.00°	81.262200'
L23	0.00	889.000000	0.00	75.00°	L23	106.2700'	40.02	75.00°	81.262200'
L24	0.00	889.000000	0.00	75.00°	L24	106.2700'	40.02	75.00°	81.262200'
L25	0.00	889.000000	0.00	75.00°	L25	106.2700'	40.02	75.00°	81.262200'
L26	0.00	889.000000	0.00	75.00°	L26	106.2700'	40.02	75.00°	81.262200'
L27	0.00	889.000000	0.00	75.00°	L27	106.2700'	40.02	75.00°	81.262200'
L28	0.00	889.000000	0.00	75.00°	L28	106.2700'	40.02	75.00°	81.262200'
L29	0.00	889.000000	0.00	75.00°	L29	106.2700'	40.02	75.00°	81.262200'
L30	0.00	889.000000	0.00	75.00°	L30	106.2700'	40.02	75.00°	81.262200'
L31	0.00	889.000000	0.00	75.00°	L31	106.2700'	40.02	75.00°	81.262200'
L32	0.00	889.000000	0.00	75.00°	L32	106.2700'	40.02	75.00°	81.262200'
L33	0.00	889.000000	0.00	75.00°	L33	106.2700'	40.02	75.00°	81.262200'
L34	0.00	889.000000	0.00	75.00°	L34	106.2700'	40.02	75.00°	81.262200'
L35	0.00	889.000000	0.00	75.00°	L35	106.2700'	40.02	75.00°	81.262200'
L36	0.00	889.000000	0.00	75.00°	L36	106.2700'	40.02	75.00°	81.262200'
L37	0.00	889.000000	0.00	75.00°	L37	106.2700'	40.02	75.00°	81.262200'
L38	0.00	889.000000	0.00	75.00°	L38	106.2700'	40.02	75.00°	81.262200'
L39	0.00	889.000000	0.00	75.00°	L39	106.2700'	40.02	75.00°	81.262200'
L40	0.00	889.000000	0.00	75.00°	L40	106.2700'	40.02	75.00°	81.262200'
L41	0.00	889.000000	0.00	75.00°	L41	106.2700'	40.02	75.00°	81.262200'
L42	0.00	889.000000	0.00	75.00°	L42	106.2700'	40.02	75.00°	81.262200'
L43	0.00	889.000000	0.00	75.00°	L43	106.2700'	40.02	75.00°	81.262200'
L44	0.00	889.000000	0.00	75.00°	L44	106.2700'	40.02	75.00°	81.262200'
L45	0.00	889.000000	0.00	75.00°	L45	106.2700'	40.02	75.00°	81.262200'
L46	0.00	889.000000	0.00	75.00°	L46	106.2700'	40.02	75.00°	81.262200'
L47	0.00	889.000000	0.00	75.00°	L47	106.2700'	40.02	75.00°	81.262200'
L48	0.00	889.000000	0.00	75.00°	L48	106.2700'	40.02	75.00°	81.262200'
L49	0.00	889.000000	0.00	75.00°	L49	106.2700'	40.02	75.00°	81.262200'
L50	0.00	889.000000	0.00	75.00°	L50	106.2700'	40.02	75.00°	81.262200'



**PROFESSIONAL**  
**CONSULTANTS**  
**INCORPORATED**  
ENGINEERING, PLANNING & SURVEYING  
3115 RUSSELL ST. P.O. BOX 1750  
MISSOULA, MONTANA 59802  
(406)728-1880 FAX (406)728-0276

**OWNERS**  
WILD RIVERS PARTNERS, LLC  
ROBERT M. & CINDIE BARTHELMESS

PREPARED AT THE REQUEST OF: WILD RIVERS PARTNERS, LLC  
PCI PROJECT: 6709-02 Z82-12

1/4	SEC. T. R.
5	20N 16W
8	20N 16W

Sheet 1 of 3  
Missoula County, Montana  
Certificate of Survey No. 5320  
JULY, 2002